



Think Automation and beyond...



FLUSH MOUNT

Switches and Pilot Devices

IDEC CORPORATION

Choose from Thousands of Flush Mount Switches



Technology advancements have completely changed the way we interact with machines in the last decade. User expectations are higher. However, most machines still rely on push buttons and pilot devices to provide distinct, assured and consistent operation for the users. Traditional mechanical push buttons and pilot devices have evolved in design to deliver a user experience beyond basic functionality. Since 1945, IDEC has been delivering safe and reliable products of the highest quality, needed by customers to meet their challenges and user expectations.

IDEC's flush mount family of switches consists of push buttons, illuminated switches, selector switches, key switches and pilot lights. They come in

different sizes, operator shapes, colors and multiple pole configurations to address mechanical, electrical and sensory requirements.

These components feature clean, elegant lines, smooth touch actuation and high reliability; all provided with a low profile for sleek flush mount styling. This wide range of switch types provides designers with a variety of options to create smooth, clutter-free, and easily sanitized operator interface panels, handheld controllers, instrumentation and other control enclosures. The combination of rich functions, visual designs and tactile feedback delivers a memorable user experience that increases the value of OEM products.

Designed for Beauty and Functionality



IDEC'S Flush Mount Switches

For any application



ø18mm
LB series



ø22mm
LBW series,
CW series



ø25mm
LW Silhouette
series



ø30mm
LW Series
with adapter,
Piezo series

IDEC's flush mount switches consume a minimal footprint and the industry's shortest rear depth requirements for standard cutout diameters. This allows designers to reduce the overall size of enclosures, saving space and money while providing a platform for innovative designs, such as portable controllers.

Plant and facility personnel are less likely to snag clothing or tools on these flush mount switches, and the possibility of accidental activation is also reduced. Minimal protrusion above the control panel results in smoother and faster finger activation.

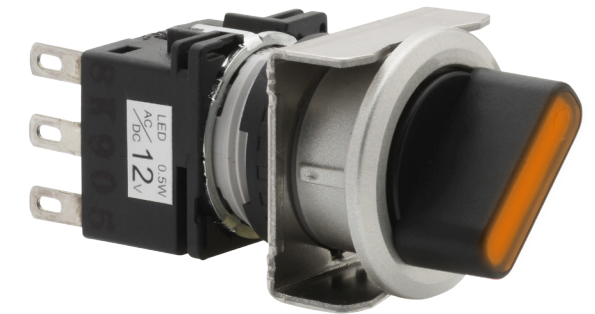
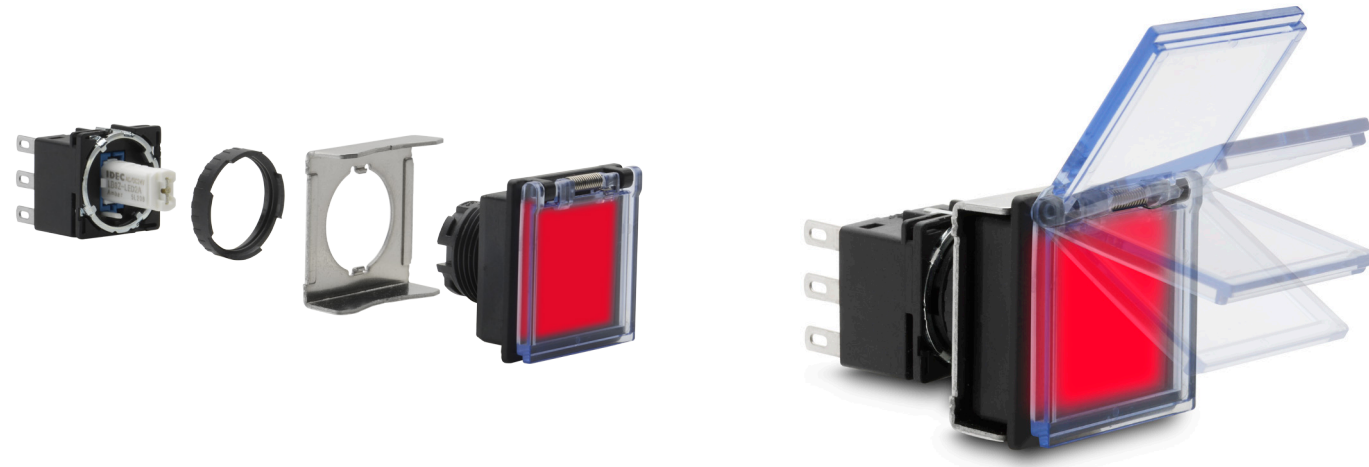
Available marking solutions include engraving on push buttons or on under-lens marking plates, both making the legend highly visible, customizable and durable. Additionally, preprinted film inserts can also be provided as a cost-effective marking solution.



For approval inquiries, please contact IDEC Product Support.

18mm LB Series

22mm LBW Series



The LB series flush mount switches use a space-saving modular design, consisting of an operator, a contact block, and an LED for pilot lights and illuminated switches. With round, square and rectangular operators to choose from, various functions and compact contact blocks, the LB series is the most versatile light-duty switch series in the 16/18mm switch market.

Features

- Rich choice of functions including illuminated or non-illuminated push buttons, pilot lights, illuminated or non-illuminated selector switches, lever switches, key switches and buzzers with up to 3PDT contacts
- 6 LED illumination colors available in 5V, 12V & 24V AC/DC
- Minimum 50,000 operations
- 3 operator shapes: round, square or rectangular with black or metallic color bezels
- Push buttons and illuminated push buttons with guards to prevent false actuation
- Solder tab compatible with 0.110" quick disconnects
- PCB mounting options boost installation efficiency

Applications

- Semiconductor
- Instrumentation
- Medical and lab equipment



Visit www.IDEC.com/LBflush

The LBW series flush mount switches are basically a 22mm version of the LB series. The two series share the same small footprint contact blocks. But the LBW has certain unique features such as ring illumination. Larger and bolder operators provide better accessibility and visibility, striking a balance between performance and cost.

Features

- Wide choice in push buttons (illuminated or non-illuminated), pilot lights, selector switches, key switches with up to 3PDT contacts, including unique ring illuminated push buttons
- 6 LED illumination colors in 5V, 12V & 24V AC/DC
- Minimum 50,000 operations
- Round or square operators with black or metallic bezels
- Push buttons and illuminated push buttons with protective guard
- Solder tab compatible with 0.110" quick disconnects
- PCB installation models available to boost mounting efficiency

Applications

- Building and lighting control
- Healthcare
- Automation



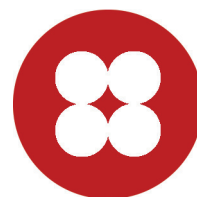
Visit www.IDEC.com/LBW



Wide Variety
of Functions and Features



Security
features in key switches make
them difficult to duplicate



Small Footprint
Saves space and allows
high density mount



Unique Ring
Illumination



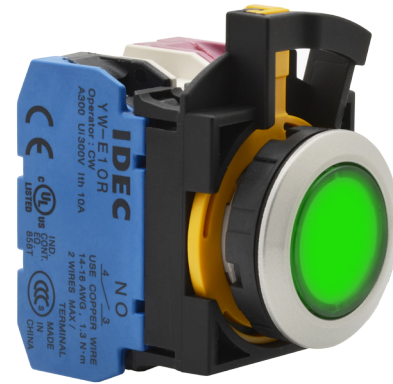
Large Size Lens
for custom
engraved symbols



High Density Switching
Up to 3 pole double throw

22mm CW Series

25mm LW Silhouette Series



The 22mm CW series flush mount switches are uniquely positioned where industrial-grade durability, good aesthetic appearance and compactness intersect. Rated at 10A 300V, CW switches have the shortest depth behind panel in this class, making them one of the top choices for tight-spaced industrial applications. The new CW contact blocks with push-in termination technology deliver improved performance in vibration environments and save up to 55% wiring labor cost.

Features

- 10A switching capacity
- 40mm shortest depth behind panel in its class
- 10mm wide contact blocks with screw or push-in terminals
- 2.5mm bezel height with IP65 and Type 4X protection
- 6 LED illumination colors in 6V, 12V, 24V AC/DC and 120V, 240V AC
- Minimum 50,000 operations
- USB 2.0 and RJ45 Ethernet panel ports in silver or black bezels

Applications

- Power generation
- HVAC and building automation
- Printing equipment



Visit www.IDEC.com/CW

The LW Silhouette switches and pilot devices boast the largest fully illuminated window size among all flush mount switches - 28mm diameter. While each member of the LW Silhouette series is attractive and highly durable, the jewel of the series is the illuminated key switch with 2-color split LED ring, with each color capable of indicating machine status or operational conditions.

Features

- Rich choices in functions including illuminated or non-illuminated push buttons, pilot lights, illuminated or non-illuminated selector switches, lever switches and key switches with up to 3PDT contacts
- 3 operator shapes: round, square or rectangular with black or metallic bezels
- Unique key selector switches with 2-color half circle illumination
- Minimum 100,000 operations
- PC board mount, solder or screw terminals available.
- Collective mounting saves space
- LED lamp rating: 6V, 12V, 24V AC/DC and 120V, 240V AC

Applications

- Metalwork machinery
- Packaging machinery
- Security equipment



Visit www.IDEC.com/LWSilh



High Load Switching
up to 300V 10A



Push-in Technology
connection also available.
Safe. Simple. Smart.



IP65 & TYPE 4X
protection built for
industrial applications



Metallic or Black
Bezel to fit with different
panel color



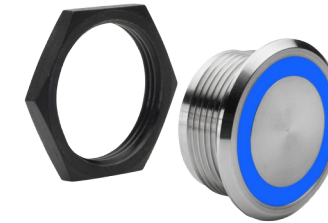
5 LED Voltages
6/12/24/120/240 V LED
Illumination



2 Color Illuminated
Key Switch provides unique
functionality and user experience

22/30mm LW Series

22/30mm Piezo Series



With a round 22/30mm adapter, the sturdy and modular 22mm LW series is a versatile mid-range group of push buttons, illuminated push buttons, pilot lights, selector switches, illuminated selector switches, key switches and even buzzers to serve the 30mm flush mount switch market. Utilizing three different mounting methods, the LW offers a flexible and cost-effective HMI solution.

Features

- Light touch and high reliability through 3mm travel stroke
- Snap switch mechanism delivering 100,000 plus operations
- PC board mount, solder or screw terminals available
- Rich choices in functions including illuminated or non-illuminated push buttons, pilot lights, illuminated or non-illuminated selector switches, lever switches and key switches with up to 3PDT contacts
- LED lamp in 6V, 12V, 24V AC/DC and 120V, 240V AC
- Buzzer, and buzzer with an LED indicator

Applications

- Semiconductor
- Industrial cleaning equipment
- Power and energy control



Visit www.IDEC.com/LW

Built with no moving parts and with a food grade stainless steel bushing, the unibody piezo push buttons are completely sealed and extremely sturdy. Equipped with the built-in LED ring, the piezo push buttons outperform mechanical push buttons in any challenging environment including food processing, beverage, packaging, marine and commercial kitchen.

Features

- Sleek, short bushing construction built with food grade stainless steel (316L)
- No moving parts, crevice-free, smooth surface for easy cleaning and sanitization
- IP68 & IP69K protection for power washdown or immersion applications
- Durable solid-state design delivering 50,000,000 plus lifecycle
- 12 or 24VDC ring or dot LED illumination as visual feedback or for indication
- Dual color, side viewable illumination models
- Pulse NO relay output

Applications

- Food process and package equipment
- Bio and pharmaceutical equipment
- Car wash equipment



Visit www.IDEC.com/piezo



Wide Variety of Functions and Features



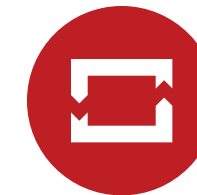
PCB, Tab or Screw Terminals available to fit different applications



Buzzer with or without LED indicator



IP68 & IP69K Power washdown compatible



Durability and reliability



Food Grade Stainless Steel

Quick Selection Guide

Series Name	LB	LBW	CW	LW Silhouette	LW with Adaptor	Piezo
						
Highlights	Space saving with removable contact blocks	Bold, clear flush mount lens with small footprint	Flush mount in industrial 22mm panel size	Prominent switches, unique key switch with LED ring	Versatile mid-range switches and pilot devices	Solid state switch, no moving parts; 316L stainless steel body
Panel Hole Size	ø18mm	ø22mm	ø22mm	ø25mm	ø30mm with 22/30mm adaptor	ø22mm/30mm
Flush Mount Bezel	✓	✓	✓	✓	✓	✓
Illuminated Pushbutton	✓	✓	✓	✓	✓	✓
Pushbutton	✓	✓	✓	✓	✓	
Pilot Light	✓	✓	✓	✓	✓	
Selector Switch	✓	✓	✓	✓	✓	
Illuminated Selector Switch	✓			✓	✓	
Key Switch	✓	✓	✓	✓	✓	
Illuminated Key Switch				✓		
Buzzer	✓				✓	
Collective Mounting	✓	✓		✓	✓	
USB & RJ45 Port			✓			
Connection Terminals	PCB, Solder tab	PCB, Solder tab	Screw, Push-in	PCB, Solder tab, Screw	PCB, Solder tab, Screw	Wire leads
Ingress Protection	IP65	IP65	IP65	IP65	IP65	IP68 & IP69K
Contact Rating	250V/5A 30V/5A	250V/5A 30V/5A	240V/6A 24V/8A	250V/2A 30V/2A	250V/2A 30V/2A	24V/1A
Search Word	IDEC LB	IDEC LBW	IDEC CW	IDEC Silh	IDEC LW	IDEC Piezo
Approvals	UL, CSA, CCC, CE, TÜV	UL, CSA, CCC, CE, TÜV	UL/c-UL, CE, CCC	UL, CSA, CE, TÜV	UL, CSA, CE, TÜV	CE



All trademarks and registered trademarks described in this brochure are the property of their respective owners.

www.IDEC.com/flushmount

www.IDEC.com

USA

IDEC Corporation
Tel: (408) 747-0550
opencontact@IDEC.com

Canada

IDEC Canada Ltd.
Tel: (905) 890-8561
sales@ca.IDEC.com

Australia

IDEC Australia Pty. Ltd.
Tel: +61-3-8523-5900
sales@au.IDEC.com

Japan

IDEC Corporation
Tel: +81-6-6398-2527
marketing@IDEC.co.jp

Thailand

IDEC Asia (Thailand) Co.,LTD.
Tel: +66-2-392-9765
sales@th.idec.com

Germany

APEM GmbH
Tel: +49-40-25 30 54-0
service@eu.IDEC.com

Hong Kong

IDEC Izumi (H.K.) Co., Ltd.
Tel: +852-2803-8989
info@hk.IDEC.com

China/Beijing

IDEC (Beijing) Corporation
Tel: +86-10-6581-6131
idec@cn.IDEC.com

China/Shanghai

IDEC (Shanghai) Corporation
Tel: +86-21-6135-1515
idec@cn.IDEC.com

China/Shenzhen

IDEC (Shenzhen) Corporation
Tel: +86-755-8356-2977
idec@cn.IDEC.com

Singapore

IDEC Asia Pte. Ltd.
Tel: +65-6746-1155
info@sg.IDEC.com

Taiwan

IDEC Taiwan Corporation
Tel: +886-2-2698-3929
service@tw.IDEC.com

©2020 IDEC Corporation. All Rights Reserved.
Catalog No. FM9Y-B100-0 8/20 2.5K

Specifications and other descriptions in this catalog are subject to change without notice.