

Technical data sheet - LÜTZE CABLEFIX[®]X

Cable Entry System for cables

Cable fittings and accessories



Identification	Type	CABLEFIX X 12
	Part-No.	606550

Use/Application/Characteristics

Application	<ul style="list-style-type: none"> • Feed-through system for unassembled cables
Characteristics	<ul style="list-style-type: none"> • Simple and quick to install: cables are inserted by pushing the end through the seal from the front. Snap-in design for enclosures with a 1.5 mm wall thickness. Provides up to 80 % time savings compared to using individual cable glands. • Integrated seal protects up to UL Type 4X, 12, 13 and IP65 • Compact design with improved cable density: up to 50% space savings compared to individual cable glands • Wide clamping ranges allow for use with cables with various outer diameters • Entry points are sealed by default, eliminating the need for blanking plugs. • Cable entry points open without any tools when inserting the cable from the front. • Acc. to UL 50E and 508A

Technical data

Dimensions (w x h x d)	148 x 60 x 13.5 mm
Number of cables x cable diameter	12 x 5 – 13 mm
Number of cables	12
Master gauge for holes	HAN 24B
Approvals	UL Type 4X (Ø 5 – 13 mm) UL Type 12/13 (Ø 4 – 13 mm) UL CCN NITW2 NITW8

18.07.2019 – Subject to technical modification

Part-No. 606550

USA: LÜTZE INC.

13330 South Ridge Drive • Charlotte, NC 28273, USA
Tel. +1 (704) 504-0222 • Fax +1 (704) 504-0223
www.lutze.com • info@lutze.com

United Kingdom: LÜTZE Ltd.

Unit 3, Sandy Hill Park
Sandy Way, Amington • GB-Tamworth, Staffs B77 4DU
Tel. +44 (0)1827 31333-0 • Fax +44 (0)1827 31333-2
www.lutze.com • sales.gb@lutze.co.uk

Technical data sheet - LÜTZE CABLEFIX[®]X

Cable Entry System for cables

Burning behavior according to	UL 94 HB
Oil resistant according to	UL/NEMA Typ 13
Temperature range	-40 °C ... +80 °C
Protection class	IP65

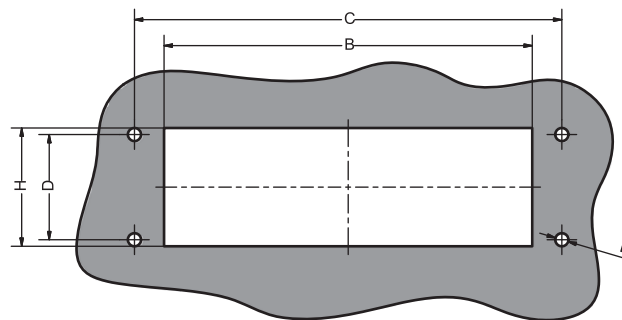
Construction

Description	LÜTZE CABLEFIX [®] X 12
Material	PA 6 glass fiber reinforced
Material seal	PUR
Material spacer	Chloroprene rubber
Material membrane	Butyl rubber
Color	black

General

PU	1 piece
----	---------

Dimensions



Cut-out (B×H)	112 × 36 mm
C	130.0 mm
D	32.0 mm
E	5.0 mm

18.07.2019 – Subject to technical modification

Part-No. 606550

USA: LÜTZE INC.

13330 South Ridge Drive • Charlotte, NC 28273, USA
 Tel. +1 (704) 504-0222 • Fax +1 (704) 504-0223
 www.lutze.com • info@lutze.com

United Kingdom: LÜTZE Ltd.

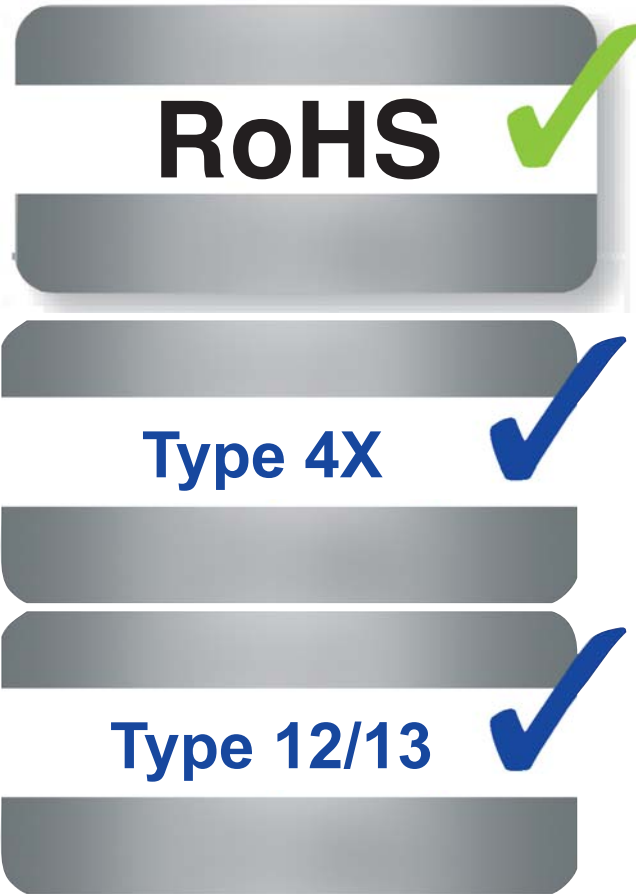
Unit 3, Sandy Hill Park
 Sandy Way, Amington • GB-Tamworth, Staffs B77 4DU
 Tel. +44 (0)1827 31333-0 • Fax +44 (0)1827 31333-2
 www.lutze.com • sales.gb@lutze.co.uk



SYSTEMATIC TECHNOLOGY

Technical data sheet - LÜTZE CABLEFIX®X Cable Entry System for cables

Symbols



18.07.2019 – Subject to technical modification

Part-No. 606550

USA: LUTZE INC.

13330 South Ridge Drive • Charlotte, NC 28273, USA
Tel. +1 (704) 504-0222 • Fax +1 (704) 504-0223
www.lutze.com • info@lutze.com

United Kingdom: LÜTZE Ltd.

Unit 3, Sandy Hill Park
Sandy Way, Amington • GB-Tamworth, Staffs B77 4DU
Tel. +44 (0)1827 31333-0 • Fax +44 (0)1827 31333-2
www.lutze.com • sales.gb@lutze.co.uk