



SRMP URMP

ATENÇÃO:

- Desconecte da rede elétrica antes de proceder qualquer trabalho neste equipamento.
- Somente profissionais qualificados podem efetuar a instalação e manutenção.
- Obedecer normas nacionais, estaduais, locais e instruções de operação.

WARNING:

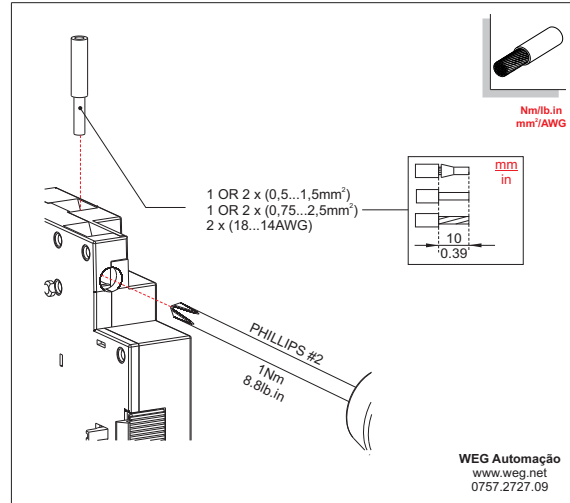
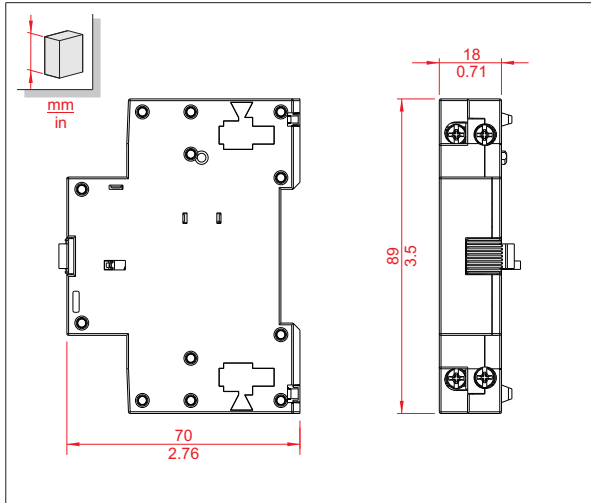
- Installation and maintenance to be performed by authorized personnel only.
- User is cautioned to observe all recommendations, warnings and cautions relating to safety of personnel and equipment as well as general and local health and safety laws, codes and procedures.

ATENCIÓN:

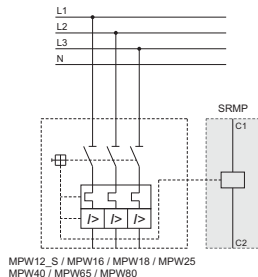
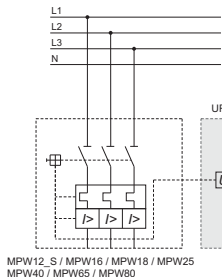
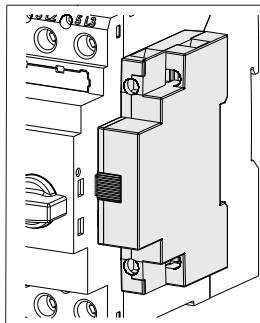
- Desconectar de la red eléctrica antes de hacer cualquier trabajo en esto equipamiento.
- Recomendase instalación por profesional calificado.
- Respetar normas nacionales y locales.
- Producto destinado a utilización en instalaciones eléctricas de baja tensión.

WARNUNG:

- Bevor irgend eine Arbeit am Gerät vorgenommen wird, muss sichergestellt sein, dass die Einheit stromlos und freigeschaltet ist.
- Sämtliche Arbeiten an der Einheit dürfen daher ausschließlich nur von Fachpersonal vorgenommen werden.
- Die jeweils geltenden nationalen, örtlichen und anlagenspezifischen Bestimmungen und Erfordernisse sind zu berücksichtigen.



WEG Automação
www.weg.net
0757.2727.09



Tensão de Operação > 0,7 x Ue
Operating Voltage > 0,7 x Ue
Tensión de operación > 0,7 x Ue
Betriebsspannung > 0,7 x Ue

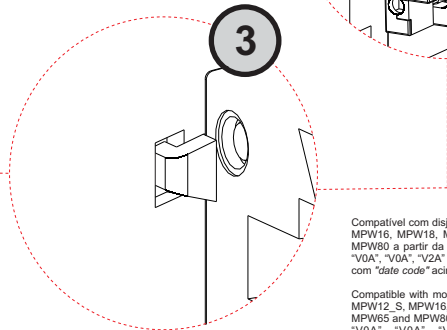
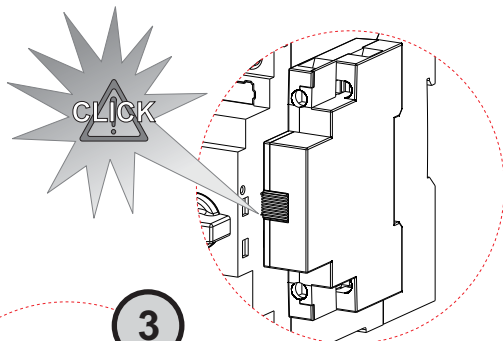
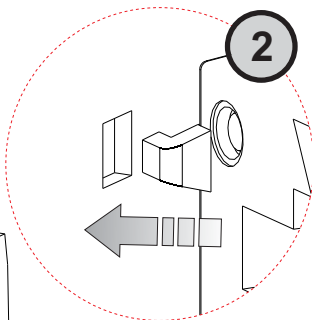
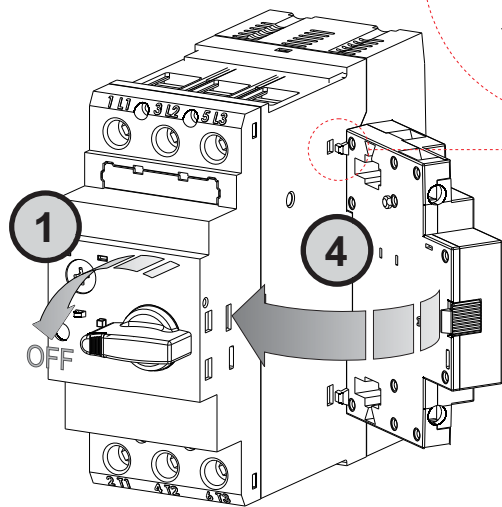
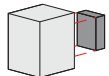
WEG IMPORTERS IN THE EUROPEAN UNION

AUSTRIA - WATT DRIVE ANTRIEBSTECHNIK GMBH - Wölferdorfer Str. 68, 2753 Markt Piesting, Wiener, Austria;
BELGIUM - WEG BENELUX S.A. - Rue de l'Industrie 30/D, 1400 Nivelles, Belgium; FRANCE - WEG FRANCE SAS - 13 Rue du Morellon, 38297 Saint Quentin Fallavier, France; GERMANY - WEG GERMANY GMBH - Geigerstraße 7, 50169 Industriegebiet Türnich 3, Kerpen, Germany; ITALY - WEG ITALIA S.R.L. - Via Viganò de Vizzi, 93/95, 20092 Chisello Balsamo, Milano, Italy; NETHERLANDS - WEG NETHERLANDS - Hanzepoort 23C, 7575 DB Oudezand, Netherlands; PORTUGAL - WEG EURO-INDUSTRIA ELECTRICA S.A. - R. Eng. Frederico Ulrich 605, 4471-908 Maia, Portugal; SPAIN - WEG IBERIA INDUSTRIAL S.L. - C/ Tierra de Barros, 5-7, 28823 Coslada, Madrid, Spain; SCANDINAVIA - WEG SCANDINAVIA AB - Box 27, 435 21, 43533 Mölndal, Sweden; UNITED KINGDOM - WEG (UK) LTD - Broad Ground Road, Redditch B968YP, Worcestershire, United Kingdom.

Information valid for WEG Group Importers.

GARANTIA / WARRANTY / GARANTÍA / GEWÄHRLEISTUNG:

A WEG oferece garantia limitada contra defeitos de fabricação ou de materiais de seus produtos. Para mais informações acesse nosso site:
WEG provides a limited warranty for its products against defects in materials and workmanship. For more information access our site:
WEG ofrece garantía limitada contra defectos de fabricación o de materiales de sus productos. Para más informaciones acceda al WEB sitio:
WEG bietet eine beschränkte Gewährleistung für ihre Produkte gegen Herstellungs- und Materialfehler. Für weitere Informationen besuchen Sie bitte unsere Webseite:
www.weg.net/warranty-automation



Compatível com disjuntores-motores MPW12_S, MPW16, MPW18, MPW25, MPW40, MPW65 e MPW80 a partir da versão "V0A", "V0A", "V0A", "V0A", "V0A", "V2A" e "V0A" respectivamente, ou com "date code" acima de 14142.

Compatible with motor-protective-circuit-breaker MPW12_S, MPW16, MPW18, MPW25, MPW40, MPW65 and MPW80 from version "V0A", "V0A", "V0A", "V0A", "V0A", "V2A" and "V0A" respectively, or date code above 14142.

Compatible con guardamotores MPW16, MPW12_S, MPW18, MPW25, MPW40, MPW65 y MPW80 a partir de la versión "V0A", "V0A", "V0A", "V0A", "V0A", "V2A" e "V0A" respectivamente, o "date code" mayor que 14142.

URMP und SRMP kann mit Motorschutzschalter MPW12_S, MPW16, MPW18, MPW25, MPW40, MPW65 und MPW80 ab Version "V0A", "V0A", "V0A", "V0A", "V2A" und "V0A" oder ab "date code" 14142 eingesetzt werden.

