

DATA SHEET



Three Phase Induction Motor - Squirrel Cage

Customer :																			
Product line : EXPLOSION PROOF			Product code : 14296383 Catalog # : 00236XT3E145TC																
Frame : 143/5TC Output : 2 HP (1.5 kW) Poles : 2 Frequency : 60 Hz Rated voltage : 230/460 V Rated current : 5.38/2.69 A L. R. Amperes : 49.5/24.7 A LRC : 9.2x(Code L) No load current : 2.40/1.20 A Rated speed : 3495 rpm Slip : 2.92 % Rated torque : 3.01 ft.lb Locked rotor torque : 370 % Breakdown torque : 420 % Insulation class : F Service factor : 1.15 Moment of inertia (J) : 0.0551 sq.ft.lb Design : B			Locked rotor time : 27s (cold) 15s (hot) Temperature rise : 80 K Duty cycle : Cont.(S1) Ambient temperature : -20°C to +40°C Altitude : 1000 m.a.s.l. Protection degree : IP55 Cooling method : IC411 - TEFC Mounting : F-1 Rotation ¹ : Both (CW and CCW) Noise level ² : 68.0 dB(A) Starting method : Direct On Line Approx. weight ³ : 75.5 lb																
<table border="1"> <tr> <td>Output</td> <td>25%</td> <td>50%</td> <td>75%</td> <td>100%</td> </tr> <tr> <td>Efficiency (%)</td> <td>78.4</td> <td>80.0</td> <td>84.0</td> <td>85.5</td> </tr> <tr> <td>Power Factor</td> <td>0.41</td> <td>0.64</td> <td>0.76</td> <td>0.82</td> </tr> </table>			Output	25%	50%	75%	100%	Efficiency (%)	78.4	80.0	84.0	85.5	Power Factor	0.41	0.64	0.76	0.82	Foundation loads Max. traction : 76 lb Max. compression : 151 lb	
Output	25%	50%	75%	100%															
Efficiency (%)	78.4	80.0	84.0	85.5															
Power Factor	0.41	0.64	0.76	0.82															
Bearing type : Sealing : Lubrication interval : Lubricant amount : Lubricant type :			<table border="0"> <tr> <td style="text-align: center;"><u>Drive end</u></td> <td style="text-align: center;"><u>Non drive end</u></td> </tr> <tr> <td style="text-align: center;">6205 2RS</td> <td style="text-align: center;">6204 2RS</td> </tr> <tr> <td style="text-align: center;">Oil Seal</td> <td style="text-align: center;">Lip Seal</td> </tr> <tr> <td style="text-align: center;">-</td> <td style="text-align: center;">-</td> </tr> <tr> <td colspan="2" style="text-align: center;">Mobil Polyrex EM</td> </tr> </table>		<u>Drive end</u>	<u>Non drive end</u>	6205 2RS	6204 2RS	Oil Seal	Lip Seal	-	-	Mobil Polyrex EM						
<u>Drive end</u>	<u>Non drive end</u>																		
6205 2RS	6204 2RS																		
Oil Seal	Lip Seal																		
-	-																		
Mobil Polyrex EM																			
Notes USABLE @208V 5.95A SF 1.15 SFA 6.84A																			
This revision replaces and cancel the previous one, which must be eliminated. (1) Looking the motor from the shaft end. (2) Measured at 1m and with tolerance of +3dB(A). (3) Approximate weight subject to changes after manufacturing process. (4) At 100% of full load.			These are average values based on tests with sinusoidal power supply, subject to the tolerances stipulated in NEMA MG-1.																
Rev.	Changes Summary		Performed	Checked	Date														
Performed by																			
Checked by				Page	Revision														
Date	10/02/2023			1 / 6															

DATA SHEET

Three Phase Induction Motor - Squirrel Cage



Customer : _____

Thermal protection

ID	Application	Type	Quantity	Sensing Temperature
1	Winding	Thermostat - 2 wires	1 x Phase	155 °C

Rev.	Changes Summary	Performed	Checked	Date
Performed by				
Checked by			Page	Revision
Date	10/02/2023		2 / 6	

TORQUE AND CURRENT VS SPEED CURVE



Three Phase Induction Motor - Squirrel Cage

Customer :

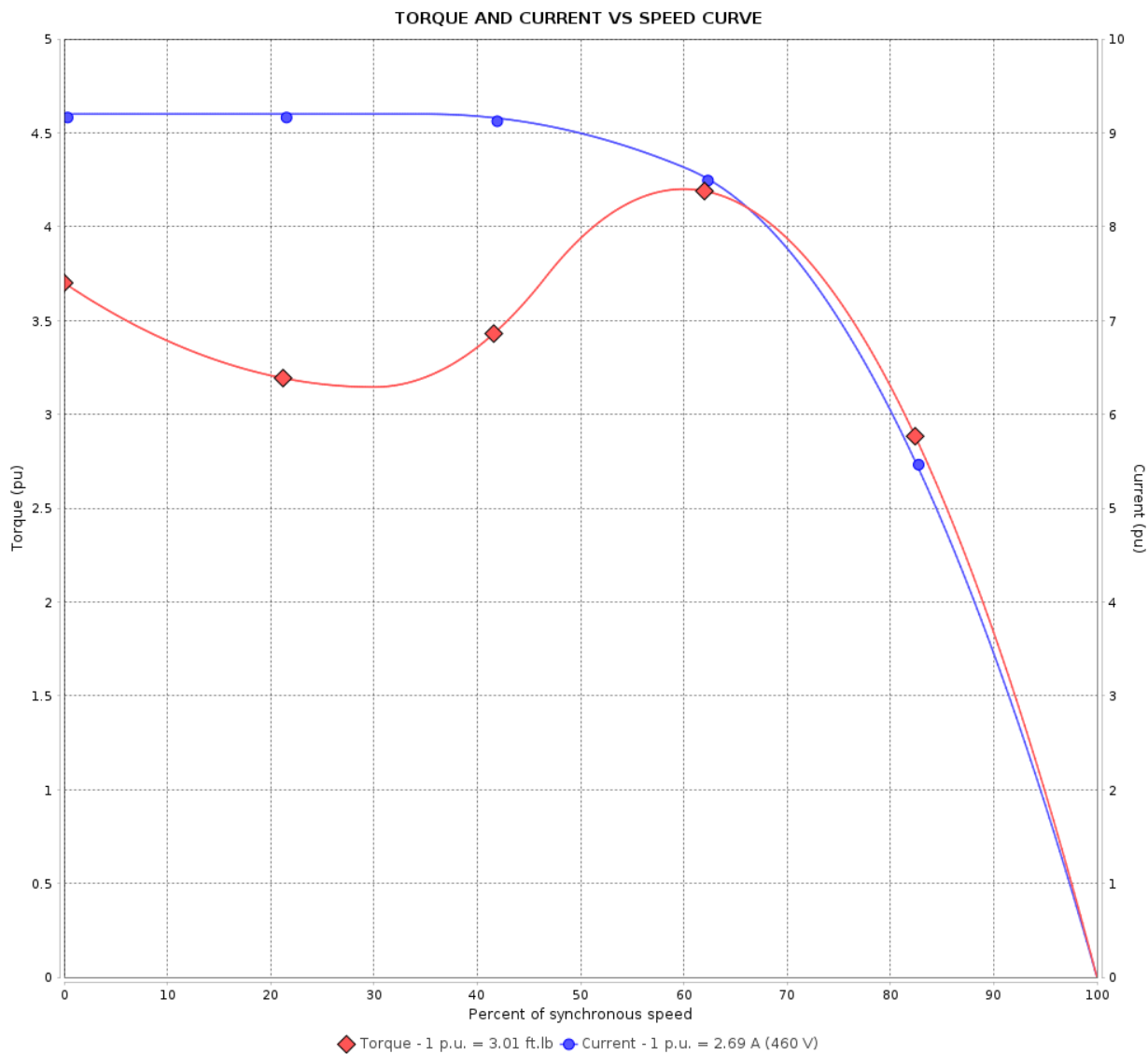
Product line : EXPLOSION PROOF

Product code :

14296383

Catalog # :

00236XT3E145TC



Performance : 230/460 V 60 Hz 2P

Rated current : 5.38/2.69 A
 LRC : 9.2
 Rated torque : 3.01 ft.lb
 Locked rotor torque : 370 %
 Breakdown torque : 420 %
 Rated speed : 3495 rpm

Moment of inertia (J) : 0.0551 sq.ft.lb
 Duty cycle : Cont.(S1)
 Insulation class : F
 Service factor : 1.15
 Temperature rise : 80 K
 Design : B

Locked rotor time : 27s (cold) 15s (hot)

Rev.	Changes Summary	Performed	Checked	Date
Performed by			Page 3 / 6	Revision
Checked by				
Date	10/02/2023			

LOAD PERFORMANCE CURVE

Three Phase Induction Motor - Squirrel Cage



Customer :

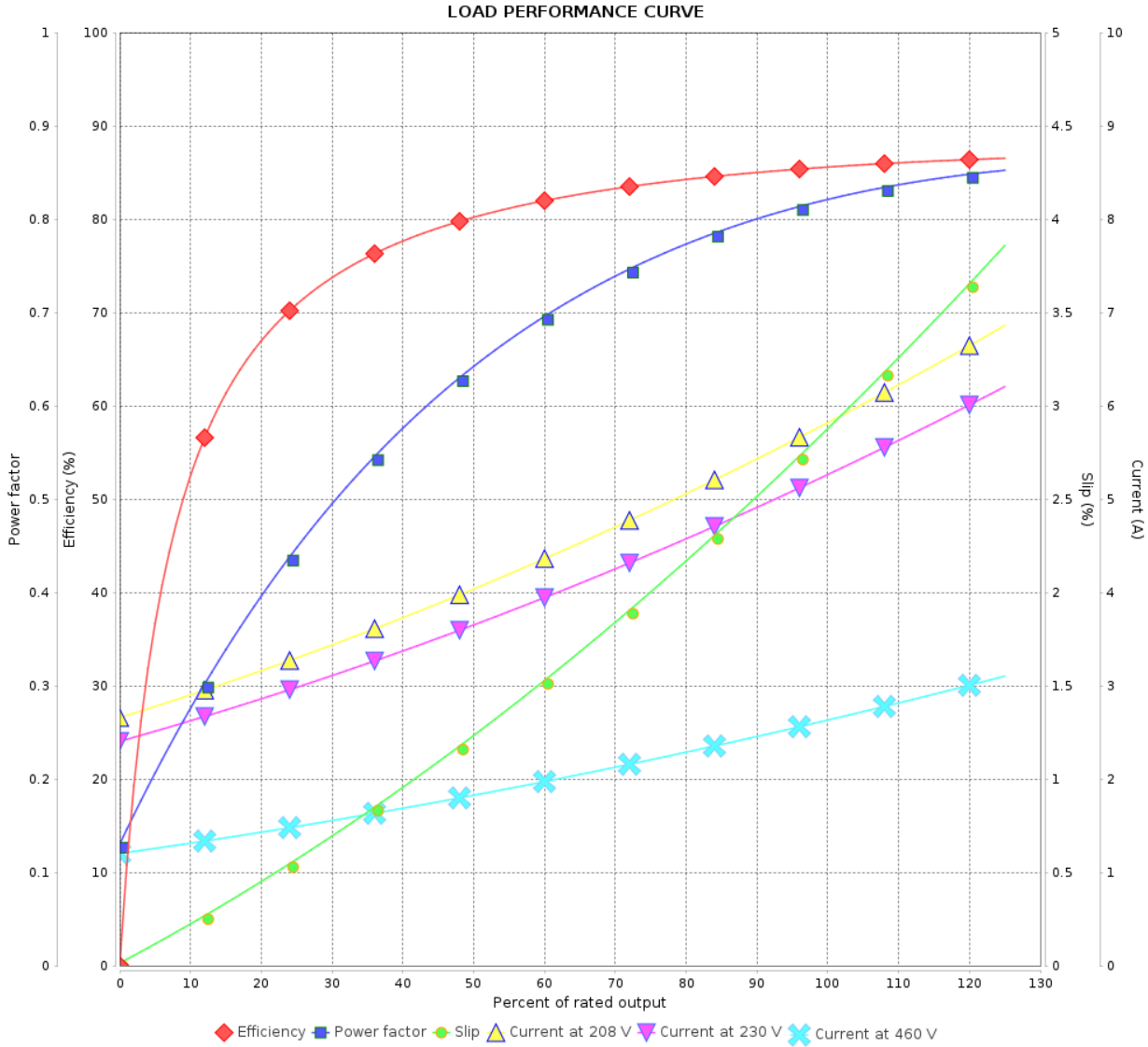
Product line : EXPLOSION PROOF

Product code :

14296383

Catalog # :

00236XT3E145TC



Performance : 230/460 V 60 Hz 2P

Rated current : 5.38/2.69 A
 LRC : 9.2
 Rated torque : 3.01 ft.lb
 Locked rotor torque : 370 %
 Breakdown torque : 420 %
 Rated speed : 3495 rpm

Moment of inertia (J) : 0.0551 sq.ft.lb
 Duty cycle : Cont.(S1)
 Insulation class : F
 Service factor : 1.15
 Temperature rise : 80 K
 Design : B

Rev.	Changes Summary	Performed	Checked	Date
Performed by			Page	Revision
Checked by				
Date				

THERMAL LIMIT CURVE

Three Phase Induction Motor - Squirrel Cage



Customer :

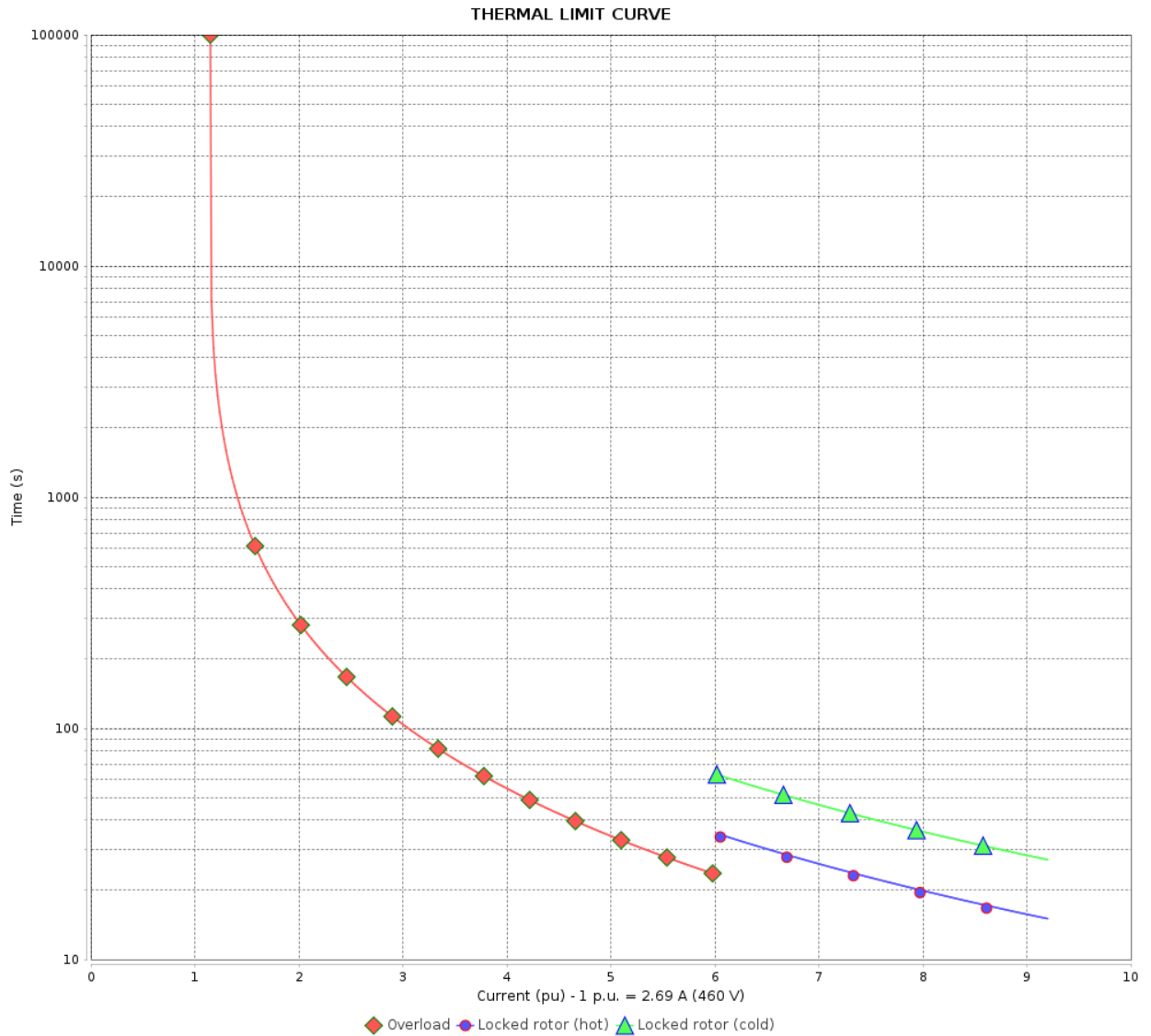
Product line : EXPLOSION PROOF

Product code :

14296383

Catalog # :

00236XT3E145TC



Performance : 230/460 V 60 Hz 2P

Rated current : 5.38/2.69 A
 LRC : 9.2
 Rated torque : 3.01 ft.lb
 Locked rotor torque : 370 %
 Breakdown torque : 420 %
 Rated speed : 3495 rpm

Moment of inertia (J) : 0.0551 sq.ft.lb
 Duty cycle : Cont.(S1)
 Insulation class : F
 Service factor : 1.15
 Temperature rise : 80 K
 Design : B

Heating constant

Cooling constant

Rev.	Changes Summary	Performed	Checked	Date
Performed by			Page 5 / 6	Revision
Checked by				
Date	10/02/2023			

VFD OPERATION CURVE

Three Phase Induction Motor - Squirrel Cage



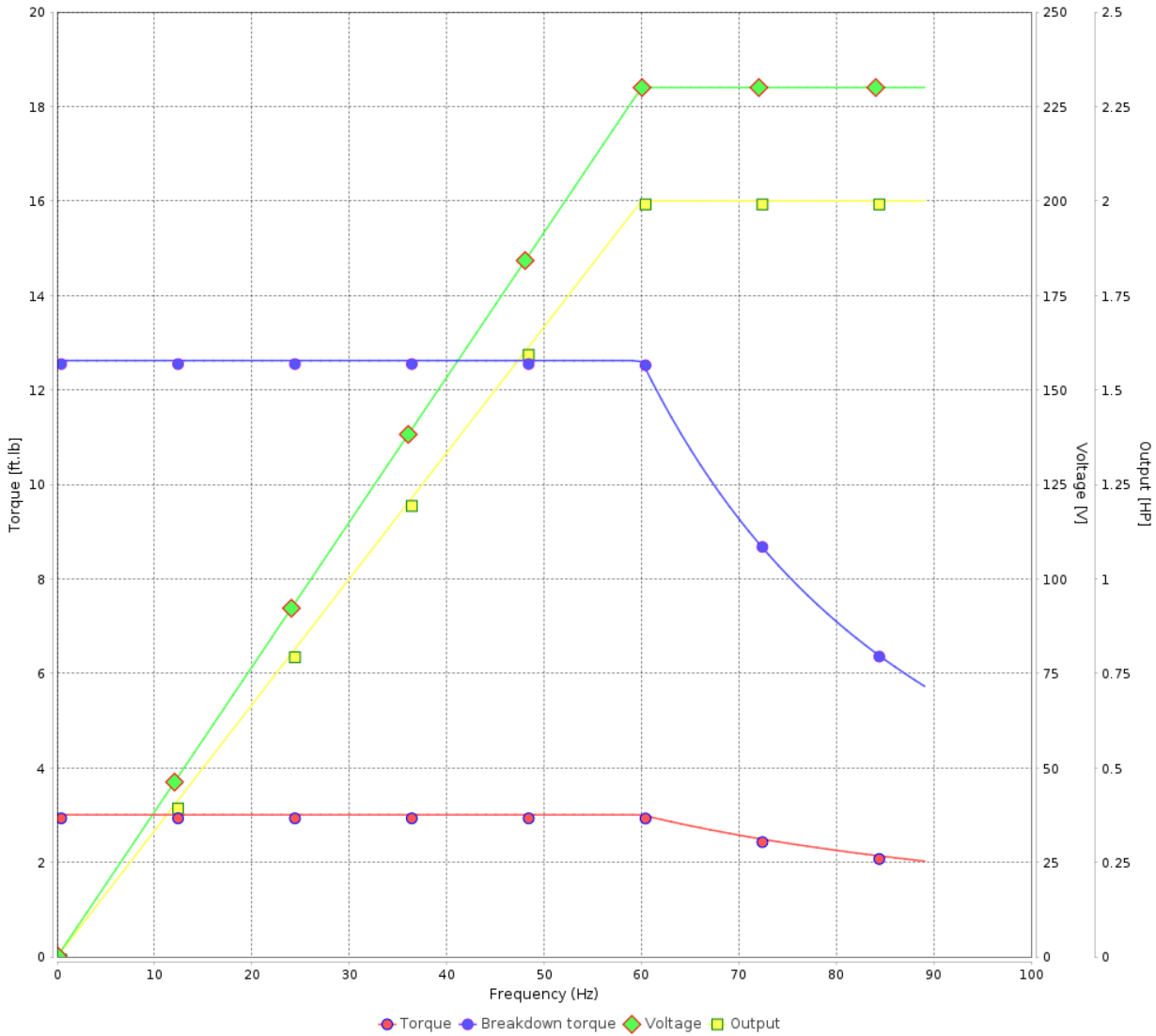
Customer :

Product line : EXPLOSION PROOF

Product code :
Catalog # :

14296383
00236XT3E145TC

VFD OPERATION CURVE

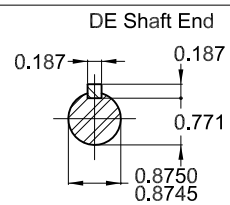
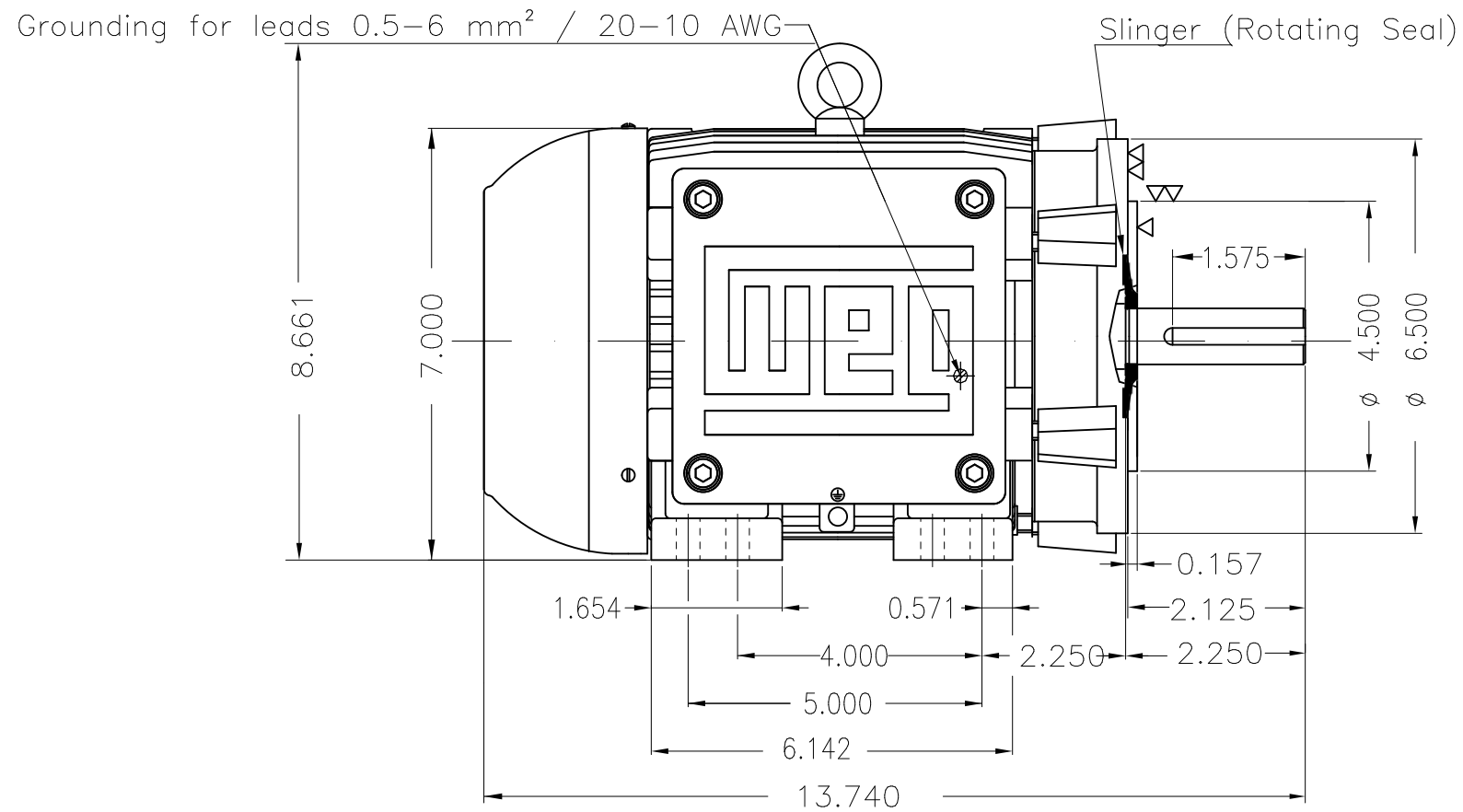
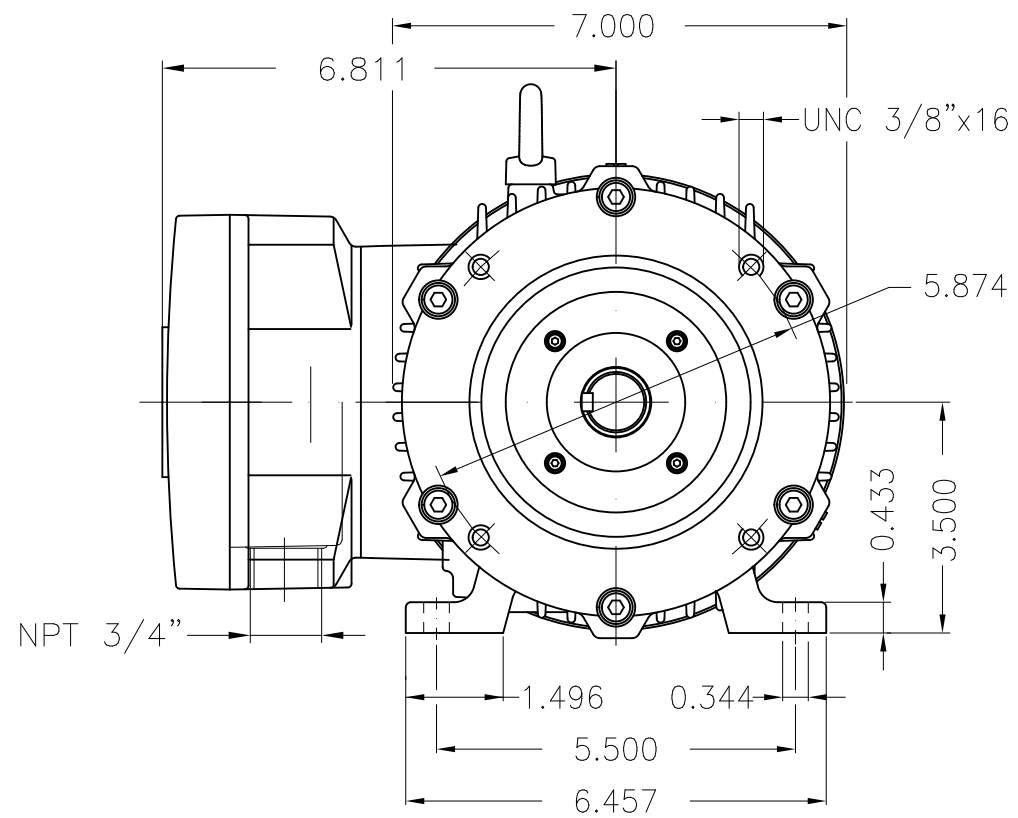


Performance : 230/460 V 60 Hz 2P

Rated current : 5.38/2.69 A
LRC : 9.2
Rated torque : 3.01 ft.lb
Locked rotor torque : 370 %
Breakdown torque : 420 %
Rated speed : 3495 rpm

Moment of inertia (J) : 0.0551 sq.ft.lb
Duty cycle : Cont.(S1)
Insulation class : F
Service factor : 1.15
Temperature rise : 80 K
Design : B

Rev.	Changes Summary	Performed	Checked	Date
Performed by			Page 6 / 6	Revision
Checked by				
Date	10/02/2023			



Color RAL 5009
 Painting plan 202P
 Mounting NEMA F-1
 Mounting B34R(D)

2 HP 02 Poles 60 Hz A

		HYBRISUSER								00
ECM	LOC	SUMMARY OF MODIFICATIONS				EXECUTED	CHECKED	RELEASED	DATE	VER
EXECUTED	HYBRISUSER	THREE PH. MOTOR EXPLOSION PROOF NEMA PREM. EFF. FRAME 143/5TC IP55 TEFC				EXECUTED				
CHECKED										
RELEASED										
REL. DATE		WMO	Jaragua do Sul	Product Engineering						

PREVIEW

WDD 00

SHEET 1 / 1



MADE IN BRAZIL

**W21X NEMA**
Premium

14296383

CC029A

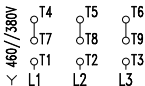
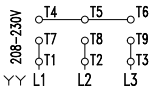
Inverter Duty Motor
Severe Duty

LISTED

MODEL 00236XT3E145TC

PH 3	FR 143/5TC		
HP(kW) 2.0(1.5)		HZ 60	IP55
V 230/460		A 5.38/2.69	
RPM 3495		NEMA NOM EFF 85.5%	
PF 0.82		SFA 6.19/3.09	DES B
INS CL F Δ T 80 K		SF 1.15	ENCL TEFC
DUTY CONT.		CODE L	ALT 1000 m.a.s.l.
AMB 40°C	USABLE @208V	5.95 A	SF 1.15 SFA 6.84
AMB 55°C SF1.0			

2.0HP 1.5kW 50Hz 380V 3.25A 2860RPM SF1.00 EFF 82.5% (IE2)



→ 6205-2RS MOBIL POLYREX EM
→ 6204-2RS

77 Lbs



TEMP CODE T3C
CSA/UL: Class I - Div. 1 - Groups C and D
CSA: Class II - Div. 1 - Groups F and G
CSA: Class I - Zone 1 - IIB

EXPLOSION PROOF MOTOR

FOR USE ON VPWM VFD 1000:1VT, 20:1CT, 1.0SF, T3C, AMB 40°C.