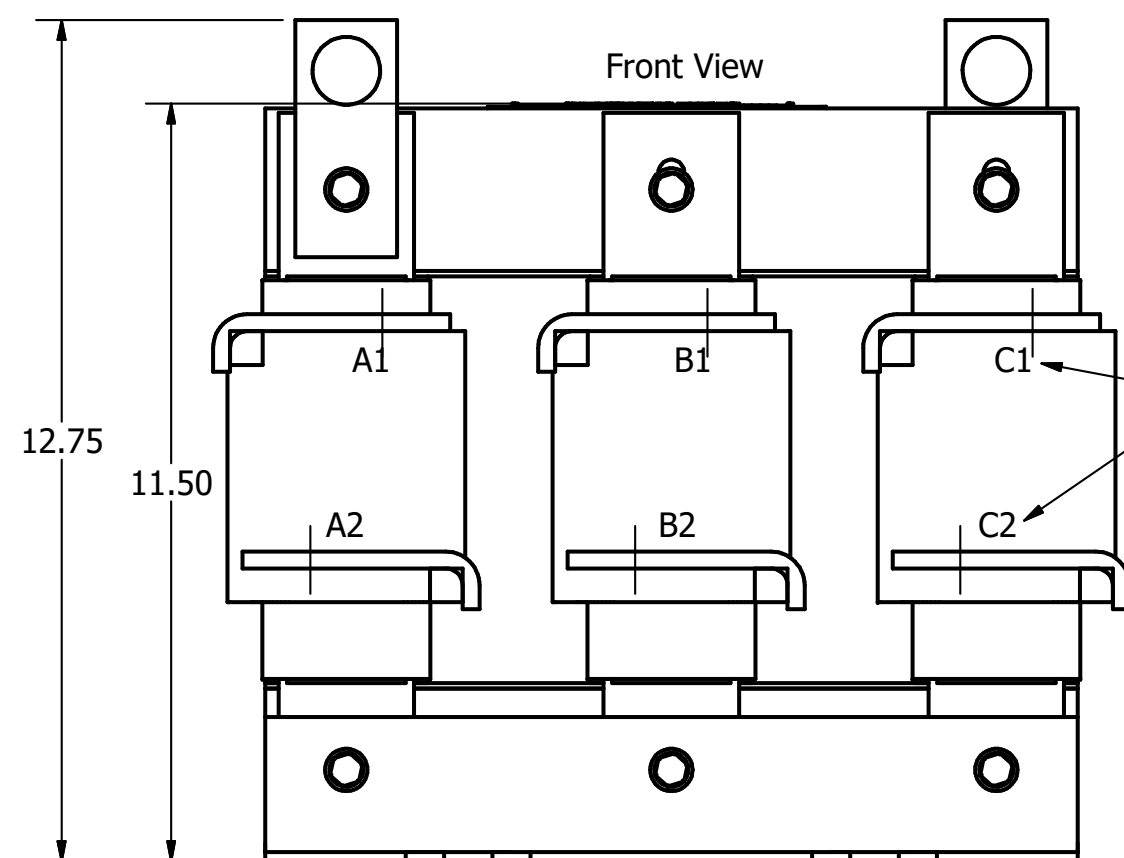
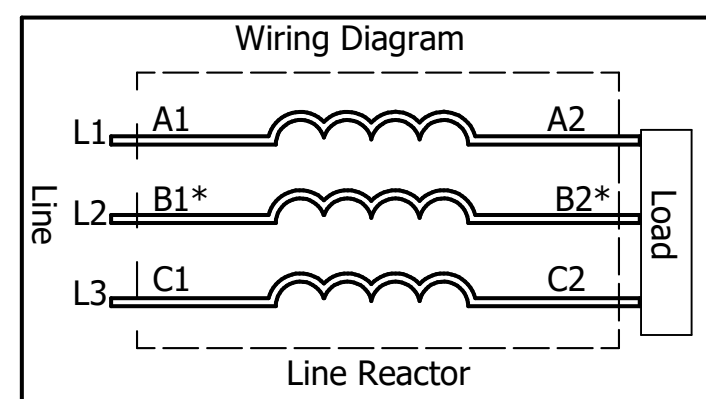
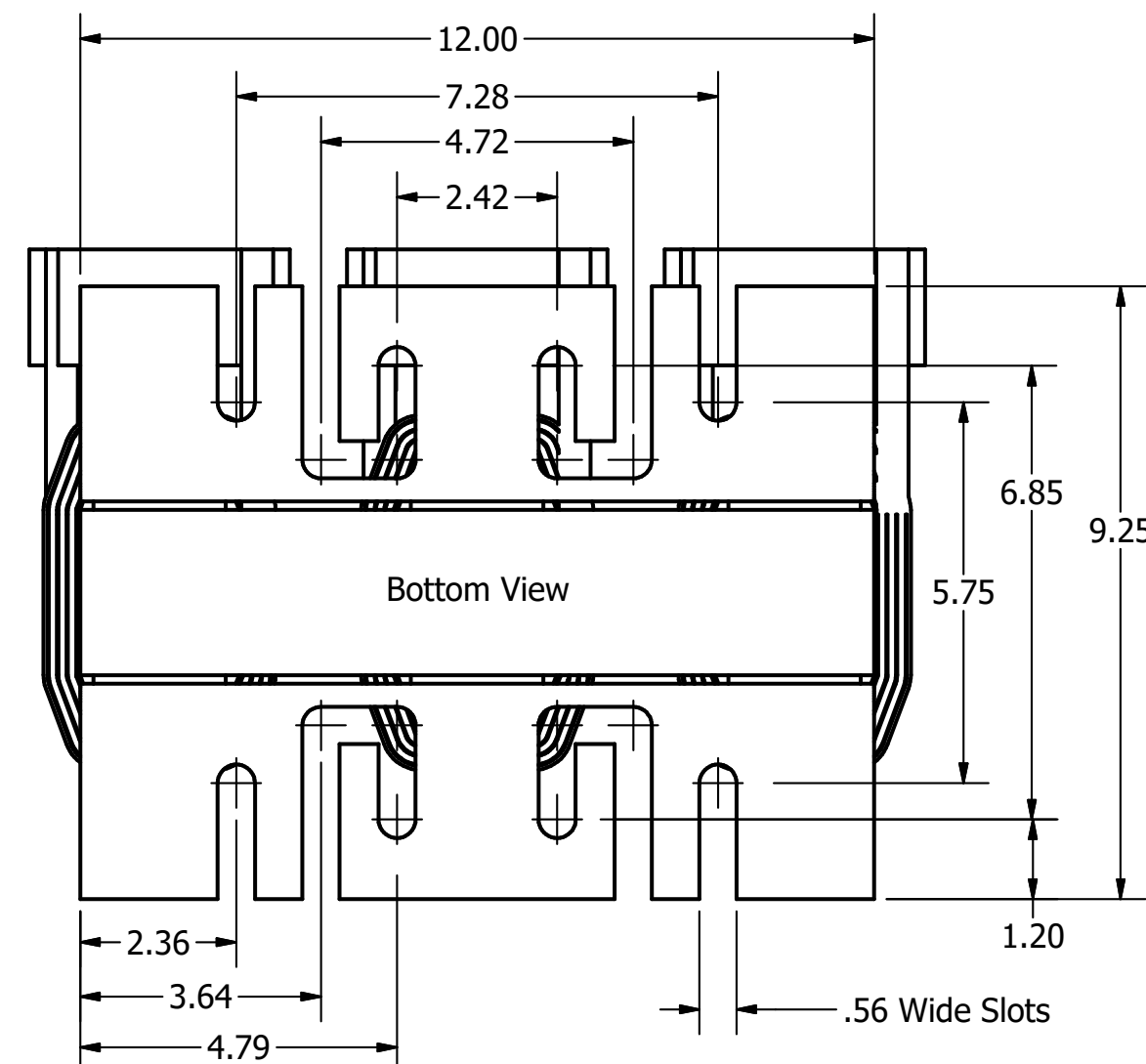
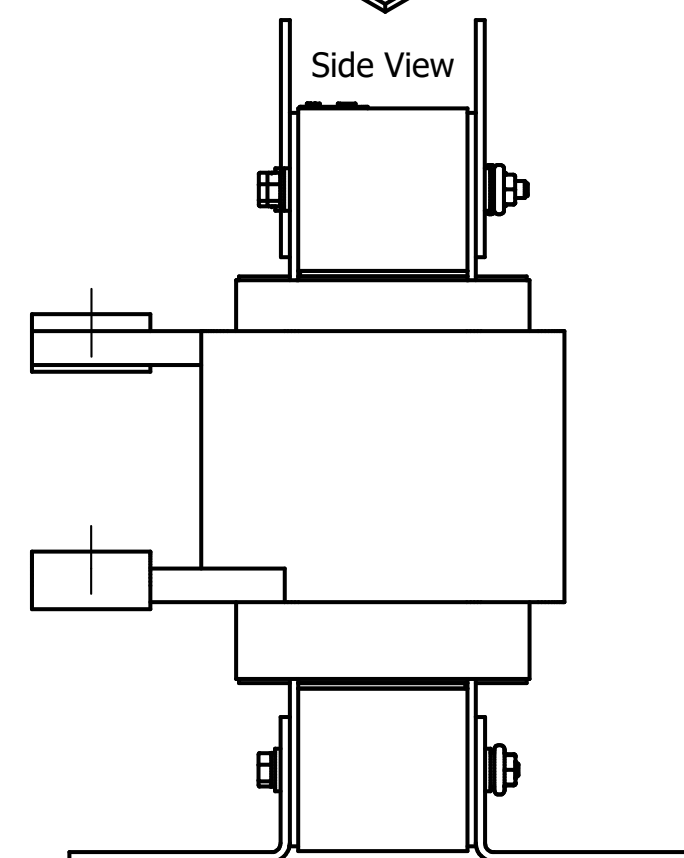


575 Rated Voltage, 600 Max Voltage, High Z, Impedance.

Part Number	Horsepower (HP)	Motor Amps (A)	Maximum Amps (A)	Inductance (uH)	Weight (LBS)	Losses (W)	Available Lug Kit	Terminal Hole Size (Inches)
KDRL46H	250	242	260	188	110	472	SLK12	0.53
KDRL47H	300	289	310	157	110	490	SLK12	0.53



(Customer Connections) Markings On Coils For Reference Only.



\* For single phase applications, use coils A and C, Isolate terminals B1 and B2.

**TCI** (800) 824-8282 [transcoll.com](http://transcoll.com)

TCI, LLC  
Germantown, WI, USA  
[transcoll.com](http://transcoll.com)  
800-824-8282

KDRUL Drive Reactor  
KDR- Motor Amps —  
3PH, 50/60Hz, —V Rated, 600V Max, —A Max  
40C Amb Max, 155C Rise, RoHS  
Manual #30895 LUG KIT #SLK—

UL LISTED CE  
250 CONN. SQ. INCH

DATE CODE A1 A2 B1 B2 C1 C2

- Notes:
1. KDR Lug Kits sold separately. Contact TCI.
  2. For KDRUL Version With Terminal Lugs Attached, See Sheet 2
  3. UL file number: cULus Listed File E116124.
  4. KDR Drive Reactors Comply With The Thermal and Altitude Standards Set Forth by NEMA ST20-1992.
  5. KDR IOM Manual Part Number 30895
  6. NEC Current For 208/240 Volts, Horsepower Based On 208 Volts.
  7. Material(s) Shall be RoHS Compliant
  8. Customer Is Responsible For Installation To Meet All National And Local Electrical Codes.

TCI, LLC CLAIMS PROPRIETARY RIGHTS IN THE MATERIAL HEREIN DISCLOSED. IT IS SUPPLIED WITHOUT PREJUDICE TO ANY PATENT RIGHTS OF TCI AND MAY NOT BE REPRODUCED OR USED TO MANUFACTURE ANYTHING SHOWN THEREIN WITHOUT WRITTEN PERMISSION FROM TCI.

TOLERANCES (EXCEPT AS NOTED)			TCI W132 N10611 Grant Drive Germantown, WI 53022		
DECIMAL			KDR L Frame, Copper Bus Reactor Drawing		
XX ± .25					
.XXX ± .10			DRN BY DSJ DATE: 3/23/18 107537DG		
FRACTIONAL ± 1/16			SCALE: 1/3		
ANGULAR ± 1°			APRVD: C		
A	Combined Drawings	3/23/18	DSW		
NO	REVISION	DATE	BY		