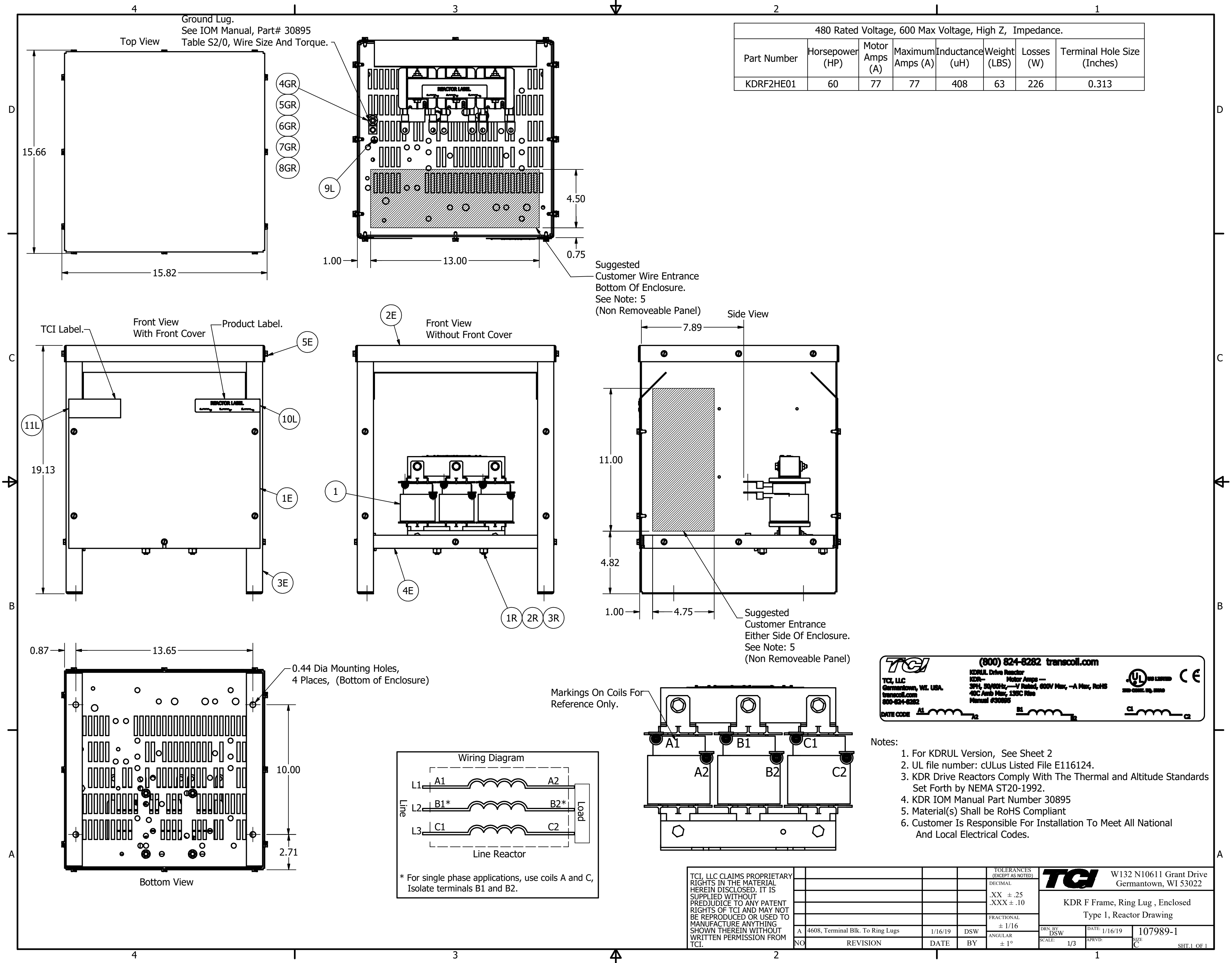


Ground Lug.
See IOM Manual, Part# 30895
Table S2/0, Wire Size And Torque.

480 Rated Voltage, 600 Max Voltage, High Z, Impedance.							
Part Number	Horsepower (HP)	Motor Amps (A)	Maximum Amps (A)	Inductance (uH)	Weight (LBS)	Losses (W)	Terminal Hole Size (Inches)
KDRF2HE01	60	77	77	408	63	226	0.313



Suggested Customer Wire Entrance Bottom Of Enclosure. See Note: 5 (Non Removeable Panel)

Suggested Customer Entrance Either Side Of Enclosure. See Note: 5 (Non Removeable Panel)

TGI (800) 824-8282 transcoll.com

TGI, LLC
Germantown, WI USA
transcoll.com
800-824-8282

KDRUL Drive Reactor
KDR- Motor Amps ---
3PH, 30/60Hz, ---V Rated, 600V Max, -A Max, RoHS
40C Amb Max, 135C Rise
Manual #30895

DATE CODE A1 A2 C1 C2

UL LISTED FILE E116124

- Notes:
1. For KDRUL Version, See Sheet 2
 2. UL file number: cULus Listed File E116124.
 3. KDR Drive Reactors Comply With The Thermal and Altitude Standards Set Forth by NEMA ST20-1992.
 4. KDR IOM Manual Part Number 30895
 5. Material(s) Shall be RoHS Compliant
 6. Customer Is Responsible For Installation To Meet All National And Local Electrical Codes.

TGI, LLC CLAIMS PROPRIETARY RIGHTS IN THE MATERIAL HEREIN DISCLOSED. IT IS SUPPLIED WITHOUT PREJUDICE TO ANY PATENT RIGHTS OF TGI AND MAY NOT BE REPRODUCED OR USED TO MANUFACTURE ANYTHING SHOWN THEREIN WITHOUT WRITTEN PERMISSION FROM TGI.				TOLERANCES (EXCEPT AS NOTED) DECIMAL XX ± .25 .XXX ± .10 FRACTIONAL ± 1/16 ANGULAR ± 1°		W132 N10611 Grant Drive Germantown, WI 53022 KDR F Frame, Ring Lug, Enclosed Type 1, Reactor Drawing DRN BY DSW DATE: 1/16/19 107989-1 SCALE: 1/3 APRVD: SIZE C SHT. 1 OF 1	
A	4608, Terminal Blk. To Ring Lugs	1/16/19	DSW	NO	REVISION	DATE	BY