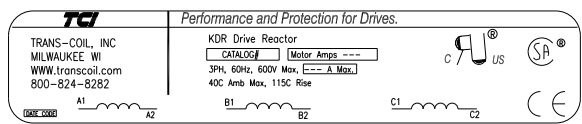
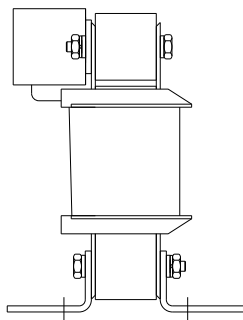
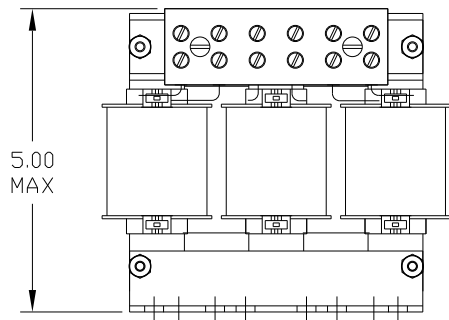
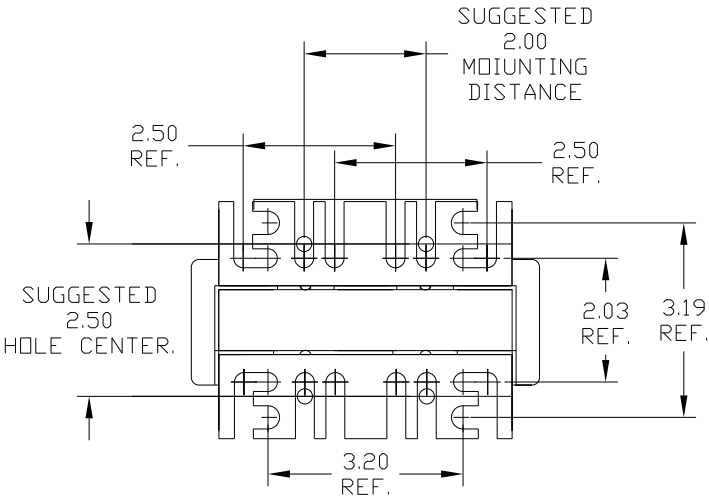


CATALOG NO	VOLTAGE	NEC MOTOR HP	NEC MOTOR CURRENT	WATTS LOSS	APPROX WT-LBS	TORQUE (LB-IN)
KDRB45L	575/600	15	17.0	66	8	20

NOTE: NEC MOTOR CURRENT SHOWN ARE BASED ON HORSEPOWER AT 575 VOLTS.



Block Wire Range: #18 to #4 AWG Solid or Stranded, Copper
Tightening Torque: 20 LB-IN



			TOLERANCES (EXCEPT AS NOTED)	7878 N. 86th STREET MILWAUKEE, WI 53224
			DECIMAL	
			.XX ± .03	KDR DRIVE REACTOR 600V LOW Z, FRAME B
			.XXX ± .01	
ADD MARKING NOTE	11/15/06	DSW	FRACTIONAL ± 1/32	DRN. BY DSW
2235 MOUNTING CHANGE	09/15/03	DSW	ANGULAR ± 1/2°	DATE 07/27/01
NO REVISION	DATE	BY		APRVD.
				DWG. NO. B KDRB45LDG
				SHT. 1 OF 1