



ZV1H 236-11Z-U180

- Thermoplastic enclosure
- Good resistance to oil and petroleum spirit
- Wide range of alternative actuators
- 30 mm x 58,5 mm x 30 mm
- Lever angle adjustable in 10° steps
- Double-insulated
- Mounting details to EN 50047
- Actuator heads can be repositioned by 4 x 90°

Data

Ordering data

Product type description	ZV1H 236-11Z-U180
Article number (order number)	151136842

General data

Standards	BG-GS-ET-15 EN ISO 13849-1 EN IEC 60947-5-1
Housing construction form	Norm construction design
Actuator type to EN 50047	A
Enclosure material	Plastic, glass-fibre-reinforced
Lever material	Plastic
Gross weight	70 g

Safety classification

Standards EN ISO 13849-1

Mission time 20 Year(s)

Mechanical data

Actuating element	Roller lever
Roller material	Plastic
Mechanical life, minimum	20,000,000 Operations
Actuating speed, maximum	1 m/s
Note (Actuating speed)	Actuating speed with actuating angle 30° to switch axis
Actuating torque, minimum	0.2 Nm
Positive break torque	0.2 Nm

Mechanical data - Connection technique

Termination	Screw terminals M20 x 1.5
Cable section, minimum	0.75 mm ²
Cable section, maximum	2.5 mm ²
Note (Cable section)	All indications including the conductor ferrules.

Mechanical data - Dimensions

Length of sensor	42.5 mm
Width of sensor	30 mm
Height of sensor	109 mm

Ambient conditions

Degree of protection	IP65 IP67
Ambient temperature	-30_+80

Ambient conditions - Insulation values

Rated insulation voltage U_i	500 V
Rated impulse withstand voltage U_{imp}	6 kV

Electrical data

Thermal test current	10 A
Required rated short-circuit current	1,000 A
Utilisation category AC-15	4 A
Utilisation category DC-13	24 VDC
Utilisation category DC-13	1 A
Switching frequency	5,000 /h
Material of the contacts, electrical	Silver

Ordering code

Product type description:

(1)(2) 2(3)6-(4)Z(5)-(6)-(7)-(8)-(9)

(1)

Z	Snap action
T	Slow action (not for AF/S)

(2)

S	Plunger S
R	Roller plunger R
4S	Plunger 4S
4R	Roller plunger 4R
1R	Offset roller lever 1R
K	Offset roller lever K
3K	Angle roller lever 3K

4K	Angle roller lever 4K
K4	Angle roller lever K4
1H	Roller lever 1H
7H	Roller lever 7H
10H	Rod lever 10H
12H	Roller lever 12H
14H	Roller lever 14H
AF	Spring rod lever AF
RMS	Brass roller

(3)

3	slim design
215	large design

(4)

02	2 NC contact
11	1 NO contacts/1 NC contact
20	2 NO contacts, (switches with 2 NO contacts are not suitable for safety applications)

(5)

H	Slow action with staggered contacts
UE	Slow action with overlapping contacts

(6)

without	Cable entry M20
ID	IDC method of termination
NPT	Cable entry NPT 1/2"
ST	M12 connector with A-coding
ST-2310	M12 connector with B-coding

(7)

1297

Enclosure with transverse slotted holes

(8)

2138

Roller lever 7H for position switches with safety function

(9)

1637

Gold-plated contacts

Pictures

Product picture (catalogue individual photo)

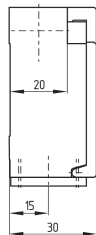
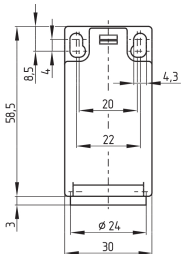


ID: k236hf01

| 903.0 kB | .jpg | 352.778 x 863.6 mm - 1000 x 2448 px - 72 dpi

| 103.9 kB | .png | 74.083 x 181.328 mm - 210 x 514 px - 72 dpi

Dimensional drawing basic component

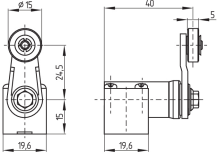


ID: 1-236g01

| 4.0 kB | .png | 74.083 x 73.378 mm - 210 x 208 px - 72 dpi

| 115.0 kB | .jpg | 352.778 x 349.956 mm - 1000 x 992 px - 72 dpi

Dimensional drawing actuator



ID: 1h236g01

| 87.7 kB | .cdr |

| 7.8 kB | .png | 74.083 x 51.153 mm - 210 x 145 px - 72 dpi

| 85.2 kB | .jpg | 352.778 x 244.475 mm - 1000 x 693 px - 72 dpi

Schmersal, Inc., 15 Skyline Drive, Hawthorne, NY 10532

The details and data referred to have been carefully checked. Images may diverge from original. Further technical data can be found in the manual. Technical amendments and errors possible.

Generated on: 07/03/2023, 10:02