



## TS422-01Y

- 1 Contact
- Metal enclosure
- Protection class IP65
- 2 cable entries M 20 x 1.5
- 106 mm x 71 mm x 63 mm (basic component)

## Data

### Ordering data

Product type description	TS 422-01Y
Article number (order number)	101058334
EAN (European Article Number)	4030661032108
eCl@ss number, Version 9.0	27-27-06-01

### Certifications

Certificates	CCC
	EAC
	DNV GL

### General data

Product name	422 plunger S
Standards	EN 60947-5-1
Active principle	mechanical
Slide form	Sphere
Enclosure material	Grey cast iron, galvanised
Enclosure coating material	painted
Material of the contacts, electrical	Silver
Gross weight	970.000 g

### General data - Features

Number of openers	1
-------------------	---

## Mechanical data

Actuating element	Plunger
Mechanical life, minimum	10,000,000 Operations
Actuating angle	20 °
Contact opening	2 x 6 mm
Actuating speed, minimum	1 mm/min
Actuating speed, maximum	1 m/s
Note (Actuating speed)	Actuating speed with vertical actuating angle to switch axis

## Mechanical data - Connection technique

Terminal Connector	Screw connection
Cable section, minimum	1.5 mm <sup>2</sup>
Cable section, maximum	2.5 mm <sup>2</sup>
Note (Cable section)	All indications about the cable section are including the conductor ferrules.
Wire cross-section	13 AWG

## Mechanical data - Dimensions

Height of sensor	97 mm
Length of sensor	63 mm
Width of sensor	106 mm
Diameter of the Plunger	10 mm

## Ambient conditions

Protection class	IP 65 to IEC/EN 60529
Ambient temperature, minimum	-30 °C
Ambient temperature, maximum	+90 °C

## Electrical data

Thermal test current	16 A
Utilisation category AC-15	400 VAC
Utilisation category AC-15	4 A
Switching element	Opener (NC)
Note (Switching element)	with double break
Switching principle	Creep circuit element

## Notes

Note (General)	Actuation from the side of the plunger should be avoided, since this reduces the mechanical life of the position switch.
----------------	--

## Pictures

### Product picture (catalogue individual photo)

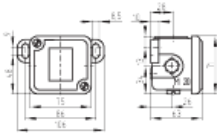


ID: kt422f01

| 42,2 kB | .png | 74.083 x 74.789 mm - 210 x 212  
Pixel - 72 dpi

| 539,5 kB | .jpg | 352.778 x 356.658 mm - 1000 x  
1011 Pixel - 72 dpi

### Dimensional drawing basic component



ID: 1t422g01

| 3,6 kB | .png | 74.083 x 51.858 mm - 210 x 147 Pixel  
- 72 dpi

| 29,4 kB | .cdr |

| 82,3 kB | .jpg | 352.778 x 247.297 mm - 1000 x 701  
Pixel - 72 dpi

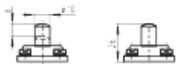
### Switch travel diagram



ID: kt422s01

| 833,0 b | .png | 74.083 x 52.564 mm - 210 x 149  
Pixel - 72 dpi

### Dimensional drawing actuator



ID: 1t422b01

| 2,2 kB | .png | 74.083 x 51.858 mm - 210 x 147 Pixel  
- 72 dpi

| 33,5 kB | .jpg | 352.778 x 247.297 mm - 1000 x 701  
Pixel - 72 dpi

### Operating principle



ID: 235sz01

| 1,8 kB | .png | 74.083 x 251.883 mm - 210 x 714  
Pixel - 72 dpi

| 95,3 kB | .jpg | 352.778 x 1199.444 mm - 1000 x  
3400 Pixel - 72 dpi



| 14,1 kB | .cdr |

K.A. Schmersal GmbH & Co. KG, Möddinghofe 3, D-42279 Wuppertal

The details and data referred to have been carefully checked. Images may diverge from original. Further technical data can be found in the manual. Technical amendments and errors possible.

Generated on 16.09.2020 22:58:19