

Archive



TR 470-33Y

- 4 cable entries M 20 x 1.5
- Actuator can be repositioned by 90°

Data

Ordering data

Note (Delivery capacity)	Not available!
Product type description	TR 470-33Y
Article number (order number)	101058872
EAN (European Article Number)	4030661253848

Certifications

Certificates	EAC DNV GL
--------------	---------------

General data

Product name	470 roller plunger _R
Slide form	Castor
Roller material	Plastic
Gross weight	2847.000 g

General data - Features

Number of openers	3
Number of shutters	3

Mechanical data

Actuating element	Roller plunger
Mechanical life, minimum	10,000,000 Operations
Actuating angle, from left of switch axis	30 °

Actuating angle, from right of switch axis	30 °
Contact opening	max. 2 x 6 mm
Actuating speed, minimum	1 mm/min
Actuating speed, maximum	0.5 m/s
Note (Actuating speed)	Actuating speed with vertical actuating angle to switch axis

Mechanical data - Connection technique

Terminal Connector	Screw connection
Cable section, minimum	1.5 mm ²
Cable section, maximum	2.5 mm ²
Note (Cable section)	All indications about the cable section are including the conductor ferrules.
Wire cross-section	13 AWG

Mechanical data - Dimensions

Height of sensor	240 mm
Length of sensor	64 mm
Width of sensor	130 mm
Width of Castor	6.5 mm
Diameter of Castor	25 mm

Electrical data

Utilisation category AC-15	400 VAC
Utilisation category AC-15	4 A
Switching element	NO contact, NC contact
Note (Switching element)	with double break
Switching principle	Creep circuit element

Pictures

Product picture (catalogue individual photo)

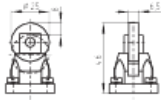


ID: bt441f04

| 25,4 kB | .png | 74.083 x 74.083 mm - 210 x 210
Pixel - 72 dpi

| 64,4 kB | .jpg | 140.406 x 140.406 mm - 398 x 398
Pixel - 72 dpi

Dimensional drawing actuator

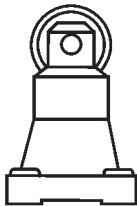


ID: 1t422b03

| 55,3 kB | .jpg | 352.778 x 247.297 mm - 1000 x 701
Pixel - 72 dpi

| 3,0 kB | .png | 74.083 x 51.858 mm - 210 x 147 Pixel
- 72 dpi

Operating principle



ID: 235rz01

| 2,9 kB | .png | 74.083 x 167.922 mm - 210 x 476
Pixel - 72 dpi

| 149,7 kB | .jpg | 352.778 x 799.394 mm - 1000 x
2266 Pixel - 72 dpi

| 15,2 kB | .cdr |

K.A. Schmersal GmbH & Co. KG, Möddinghofe 3, D-42279 Wuppertal

The details and data referred to have been carefully checked. Images may diverge from original. Further technical data can be found in the manual. Technical amendments and errors possible.

Generated on 17.09.2020 16:56:39