

## Datasheet - TR 422-01Y

/ medium heavy Position switch / T 422 / 422 Roller plunger R



Preferred typ



- Metal enclosure
- 1 Contact
- 106 mm x 71 mm x 63 mm (basic component)
- Protection class IP65
- Actuator can be repositioned by 90°
- 2 cable entries M 20 x 1.5

(Minor differences between the printed image and the original product may exist!)

### Ordering details


Product type description	TR 422-01Y
Article number	101058682
EAN code	4030661033273
eCl@ss	27-27-06-01

### Approval

Approval



### Global Properties

Product name	422 Rollendruckbolzen R
Standards	EN 60947-5-1
Compliance with the Directives (Y/N) 	Yes
Suitable for safety functions (Y/N)	No
Standard housing (Y/N)	No
Materials	
- Material of the housings	cast iron, galvanized
- Roller material	Plastic
- Material of the contacts	Silver
Housing coating	painted

Weight	950 g
Slide form	Castor

## Mechanical data

---

Design of electrical connection	Screw connection
Cable section	
- Min. Cable section	1.5 mm <sup>2</sup>
- Max. Cable section	2.5 mm <sup>2</sup>
AWG-Number	13
Active principle	mechanical
Mechanical life	10.000.000 operations
notice	All indications about the cable section are including the conductor ferrules.
Design of actuating element	Roller plunger
Bounce duration	
Switchover time	
Contact opening	2 x 6 mm
Actuating speed with vertical actuating angle to switch axis	
- Min. Actuating speed	1 mm/min
- Max. Actuating speed	0,5 m/s
- Actuating angle from left of switch axis	30°
- Actuating angle from right of switch axis	30°


## Ambient conditions

---

Ambient temperature	
- Min. environmental temperature	-30 °C
- Max. environmental temperature	+90 °C
Protection class	IP65 to IEC/EN 60529

## Electrical data

---

Design of control element	Opener (NC)
- with double break	
Switching principle	Creep circuit element
- positive break NC contact 	
Number of shutters	0 piece
Number of openers	1 piece
Rated insulation voltage U <sub>i</sub>	400 V
Thermal test current I <sub>th</sub>	16 A
Utilisation category	AC-15: 400 V / 4 A
Max. fuse rating	16 A gG D-fuse

## Dimensions






---

Dimensions of the sensor	
- Width of sensor	106 mm
- Height of sensor	117 mm
- Length of sensor	63 mm
Roller wide	6.5 mm
Roller diameter	25 mm

## Switch travel diagram



Notes Switch travel diagram

-  Contact closed
  -  Contact open
  -  Setting range
  -  Break point
  -  Positive opening sequence/- angle
- VS** adjustable range of NO contact  
**VÖ** adjustable range of NC contact  
**N** after travel

## Ordering suffix

The applicable ordering suffix is added at the end of the part number of the safety switch.

Order example: TR 422-01Y- **1276-2**

...- <b>1276-2</b>	gold-plated contacts
...-T	Temperature-resistant and tropical version with ceramic insulation for -40°C ... +200°C Rated insulation voltage Ui: 500 V (Snap action)
...-RMS	Available with metal roller

## Ordering code

T(1) 422-(2)Y-(3)	
(1)	
S	Plunger S
2S	Telescopic plunger 2S
R	Roller plunger R
K	Offset roller lever K
J	Offset roller lever J
2C	Fork lever 2C
L	Roller lever L
D	Roller lever D
(2)	
01	1 Opener (NC)
10	1 Normally open contact (NO)
(3)	
T	Temperature-resistant and tropical version with ceramic insulation for -40°C ... +200°C
1276-2	gold-plated contacts

## Documents

Operating instructions and Declaration of conformity (it) 86 kB, 09.03.2016

Code: mrl\_posi-allgemein\_it

**Operating instructions and Declaration of conformity** (de) 88 kB, 18.02.2016

Code: mrl\_posi-allgemein\_de

**Operating instructions and Declaration of conformity** (ru) 133 kB, 23.12.2015

Code: mrl\_posi-allgemein\_ru

**Operating instructions and Declaration of conformity** (en) 86 kB, 23.12.2015

Code: mrl\_posi-allgemein\_en

**Operating instructions and Declaration of conformity** (pl) 118 kB, 01.04.2016

Code: mrl\_posi-allgemein\_pl

**Operating instructions and Declaration of conformity** (es) 88 kB, 09.03.2016

Code: mrl\_posi-allgemein\_es

**Declaration of conformity** (en) 96 kB, 11.04.2014

Code: konfi\_mrl\_t422\_en

**Declaration of conformity** (de) 227 kB, 03.07.2013

Code: \_\_422p01

**CCC certification** (cn) 172 kB, 20.11.2015

Code: q\_352p03

**CCC certification** (en) 171 kB, 20.11.2015

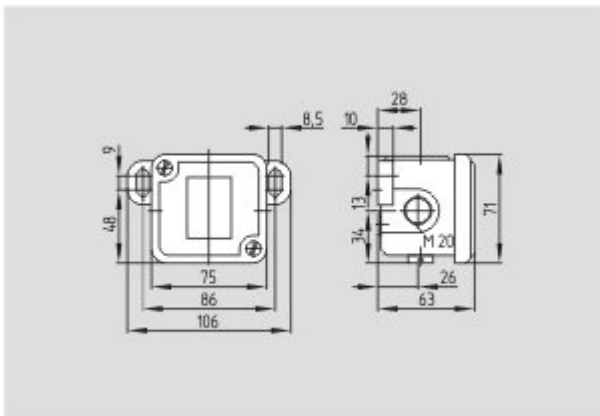
Code: q\_352p02

**EAC certification** (ru) 388 kB, 20.01.2016

Code: q\_1527p17\_ru

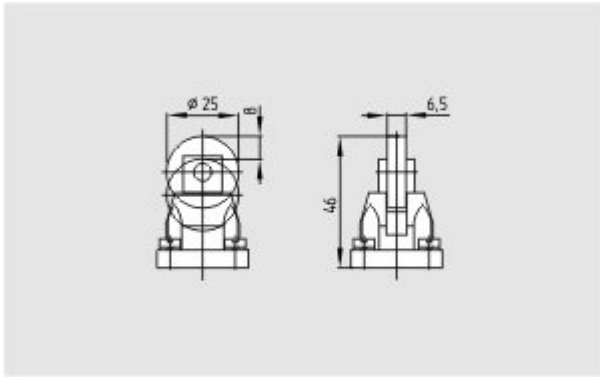
## Images

---



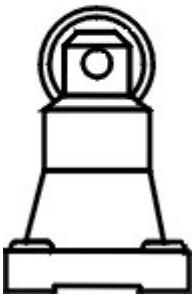
Dimensional drawing (basic component)

---



Dimensional drawing (miscellaneous)

---



Operating principle

---

K.A. Schmersal GmbH & Co. KG, Mödinghofe 30, D-42279 Wuppertal

The data and values have been checked thoroughly. Technical modifications and errors excepted.

Generiert am 19.07.2016 - 21:49:28h Kasbase 3.2.4.F.64I