



## TL470-33Y

- 6 Contacts
- Metal enclosure
- 4 cable entries M 20 x 1.5
- Lever can be transposed by 180°
- 130 mm x 194 mm x 64 mm ( basic component)
- Continuous adjustment of lever position 360°
- Actuator head can be repositioned in steps 4 x 90°
- In temperature-resistant version, the roller can be mounted in two different positions on the shaft

### Data

#### Ordering data

Product type description	TL 470-33Y
Article number (order number)	101059466
EAN (European Article Number)	4030661036076
eCl@ss number, Version 9.0	27-27-06-01

#### Certifications

Certificates	EAC DNV GL
--------------	---------------

#### General data

Product name	470 roller lever L
Standards	EN 60947-5-1
Active principle	mechanical
Slide form	Castor
Enclosure material	Grey cast iron, galvanised
Enclosure coating material	painted
Material of the contacts, electrical	Silver
Roller material	Plastic
Gross weight	3035.000 g

## General data - Features

Number of openers	3
Number of shutters	3

## Mechanical data

Actuating element	Roller lever
Mechanical life, minimum	10,000,000 Operations
Actuating angle, from left of switch axis	30 °
Actuating angle, from right of switch axis	30 °
Contact opening	max. 2 x 6 mm
Actuating speed, minimum	1 mm/min
Actuating speed, maximum	3 m/s
Note (Actuating speed)	Actuating speed with vertical actuating angle to switch axis

## Mechanical data - Connection technique

Terminal Connector	Screw connection
Cable section, minimum	1.5 mm <sup>2</sup>
Cable section, maximum	2.5 mm <sup>2</sup>
Note (Cable section)	All indications about the cable section are including the conductor ferrules.
Wire cross-section	13 AWG

## Mechanical data - Dimensions

Height of sensor	287 mm
Length of sensor	64 mm
Width of sensor	130 mm
Width of Castor	9 mm
Diameter of Castor	36 mm

## Ambient conditions

Protection class	IP 65 to IEC/EN 60529
Ambient temperature, minimum	-30 °C
Ambient temperature, maximum	+90 °C

## Electrical data

Thermal test current	16 A
Utilisation category AC-15	400 VAC
Utilisation category AC-15	4 A
Switching element	NO contact, NC contact
Note (Switching element)	with double break

Switching principle

Creep circuit element

## Pictures

### Product picture (catalogue individual photo)



ID: kt-47f01

| 61,2 kB | .png | 74.083 x 111.125 mm - 210 x 315

Pixel - 72 dpi

| 829,7 kB | .jpg | 352.778 x 529.167 mm - 1000 x

1500 Pixel - 72 dpi

### Product picture (catalogue individual photo)



ID: bt441f08

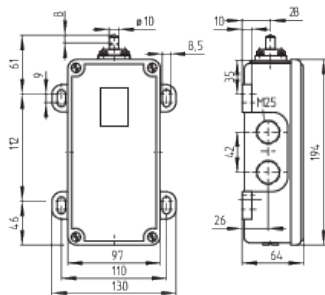
| 119,1 kB | .jpg | 181.328 x 172.156 mm - 514 x 488

Pixel - 72 dpi

| 32,5 kB | .png | 74.083 x 70.203 mm - 210 x 199

Pixel - 72 dpi

### Dimensional drawing basic component



ID: 1t470g01

| 36,5 kB | .cdr |

| 12,9 kB | .png | 74.083 x 67.733 mm - 210 x 192

Pixel - 72 dpi

| 168,6 kB | .jpg | 352.778 x 322.792 mm - 1000 x 915

Pixel - 72 dpi

### Operating principle



ID: 235hz05

| 15,2 kB | .cdr |

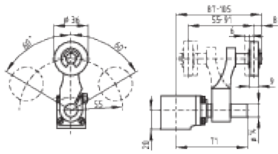
| 180,5 kB | .jpg | 352.778 x 749.3 mm - 1000 x 2124

Pixel - 72 dpi

| 3,4 kB | .png | 74.083 x 157.339 mm - 210 x 446

Pixel - 72 dpi

## Dimensional drawing actuator



ID: 1t422b07

| 9,8 kB | .png | 74.083 x 51.506 mm - 210 x 146 Pixel  
- 72 dpi

| 113,5 kB | .jpg | 352.778 x 245.181 mm - 1000 x 695  
Pixel - 72 dpi

K.A. Schmersal GmbH & Co. KG, Möddinghofe 3, D-42279 Wuppertal

The details and data referred to have been carefully checked. Images may diverge from original. Further technical data can be found in the manual. Technical amendments and errors possible.

Generated on 17.09.2020 16:47:29