



TJ 470-33Y

- 6 Contacts
- Metal enclosure
- 4 cable entries M 20 x 1.5
- 130 mm x 194 mm x 64 mm (basic component)
- Actuator heads can be repositioned by 4 x 90°

Data

Ordering data

Product type description TJ 470-33Y

General data

Product name	470 offset roller lever J
Standards	EN 60947-5-1
Active principle	mechanical
Slide form	Castor
Enclosure material	Grey cast iron, galvanised
Enclosure coating material	painted
Material of the contacts, electrical	Silver
Roller material	Plastic

General data - Features

Number of openers	3
Number of shutters	3

Mechanical data

Actuating element	Offset roller lever
Mechanical life, minimum	10,000,000 Operations
Actuating angle, from left of switch axis	45 °
Actuating angle, from right of switch axis	30 °

Contact opening	max. 2 x 6 mm
Actuating speed, minimum	1 mm/min
Actuating speed, maximum	0.5 m/s
Note (Actuating speed)	Actuating speed with vertical actuating angle to switch axis

Mechanical data - Connection technique

Terminal Connector	Screw connection
Cable section, minimum	1.5 mm ²
Cable section, maximum	2.5 mm ²
Note (Cable section)	All indications about the cable section are including the conductor ferrules.
Wire cross-section	13 AWG

Mechanical data - Dimensions

Height of sensor	274 mm
Length of sensor	64 mm
Width of sensor	130 mm
Width of Castor	9 mm
Diameter of Castor	36 mm

Ambient conditions

Protection class	IP 65 to IEC/EN 60529
Ambient temperature, minimum	-30 °C
Ambient temperature, maximum	+90 °C

Electrical data

Thermal test current	16 A
Utilisation category AC-15	400 VAC
Utilisation category AC-15	4 A
Switching element	NO contact, NC contact
Note (Switching element)	with double break
Switching principle	Creep circuit element

Notes

Note (General)	Actuation from the right should be avoided, since this reduces the mechanical life of the position switch.
----------------	--

Pictures

Product picture (catalogue individual photo)



ID: bt441f06

| 30,3 kB | .png | 74.083 x 71.967 mm - 210 x 204
Pixel - 72 dpi

| 228,4 kB | .jpg | 228.6 x 221.897 mm - 648 x 629
Pixel - 72 dpi

Product picture (catalogue individual photo)

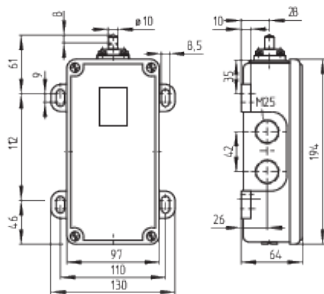


ID: kt-47f01

| 61,2 kB | .png | 74.083 x 111.125 mm - 210 x 315
Pixel - 72 dpi

| 829,7 kB | .jpg | 352.778 x 529.167 mm - 1000 x
1500 Pixel - 72 dpi

Dimensional drawing basic component



ID: 1t470g01

| 36,5 kB | .cdr |

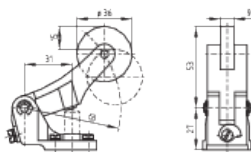
| 12,9 kB | .png | 74.083 x 67.733 mm - 210 x 192

Pixel - 72 dpi

| 168,6 kB | .jpg | 352.778 x 322.792 mm - 1000 x 915

Pixel - 72 dpi

Dimensional drawing actuator



ID: 1t422b05

| 100,7 kB | .jpg | 352.778 x 247.297 mm - 1000 x 701
Pixel - 72 dpi

| 10,4 kB | .png | 74.083 x 51.858 mm - 210 x 147

Pixel - 72 dpi

Operating principle



ID: 235rz03



| 131,9 kB | .jpg | 352.778 x 773.642 mm - 1000 x 2193 Pixel - 72 dpi

| 2,7 kB | .png | 74.083 x 162.278 mm - 210 x 460 Pixel - 72 dpi

| 15,5 kB | .cdr |

K.A. Schmersal GmbH & Co. KG, Möddinghofe 3, D-42279 Wuppertal

The details and data referred to have been carefully checked. Images may diverge from original. Further technical data can be found in the manual. Technical amendments and errors possible.

Generated on 17.09.2020 16:24:40