



T5C 235-02Z-M20

- 1 Cable entry M 20 x 1.5
- Metal enclosure
- Good resistance to oil and petroleum spirit
- 30 mm x 88,5 mm x 30 mm
- Actuator heads can be repositioned by 4 x 90°

Data

Ordering data

Product type description	T5C 235-02Z-M20
Article number (order number)	151157475
eCl@ss number, version 12.0	27-27-06-09
eCl@ss number, version 11.0	27-27-06-09
eCl@ss number, version 9.0	27-27-06-09
ETIM number, version 7.0	EC002591
ETIM number, version 6.0	EC002591

Approvals - Standards

Certificates	cULus CCC
--------------	--------------

General data

Housing material	Metal, zinc die-cast
Housing coating material	painted

Material of the actuator	Stainless steel
Gross weight	195 g

General data - Features

Number of safety contacts	2
---------------------------	---

Safety classification

Standards	BG-GS-ET-15 EN ISO 13849-1 EN IEC 60947-5-1
Mission time	20 Year(s)

Safety classification - Safety outputs

B _{10D} Normally-closed contact (NC)	20,000,000 Operations
---	-----------------------

Mechanical data

Actuating element	Swivel lever
Mechanical life, minimum	1,000,000 Operations
Positive break angle	12.5 °
Positive break torque	0.2 Nm
Opening angle	180°

Mechanical data - Connection technique

Termination	Screw terminals M20 x 1.5
Cable section, minimum	0.75 mm ²
Cable section, maximum	2.5 mm ²
Note (Cable section)	All indications including the conductor ferrules.

Mechanical data - Dimensions

Length of sensor	30 mm
Width of sensor	30 mm
Height of sensor	161 mm
Height of the actuator	78 mm

Ambient conditions

Degree of protection	IP67
Ambient temperature	-30 ... +80 °C

Ambient conditions - Insulation values

Rated insulation voltage U_i	500 V
Rated impulse withstand voltage U_{imp}	6 kV

Electrical data

Thermal test current	10 A
Utilisation category AC-15	230 VAC
Utilisation category AC-15	4 A
Utilisation category DC-13	24 VDC
Utilisation category DC-13	1 A
Switching element	Opener (NC)
Switching principle	Slow action
Switching frequency	5,000 /h
Material of the contacts, electrical	Silver

Ordering code

Product type description:

T(1)C 235-(2)Z-(3)

(1)

35	left-hand model
4	Swing-door version
215	right-hand model

(2)

01	1 NC contact
02	2 NC contact
11	1 NO contacts/1 NC contact

(3)

without	Cable entry M20
ST	M12 connector with A-coding (Caution! According to EN 60204-1, the versions with connector must only be used in PELV circuits.)
ST-2310	M12 connector with B-coding (Caution! According to EN 60204-1, the versions with connector must only be used in PELV circuits.)

Pictures

Product picture (catalogue individual photo)



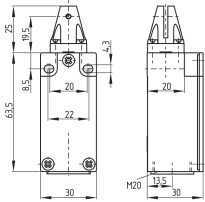
ID: k2353f02

| 482.4 kB | .jpg | 352.778 x 362.303 mm - 1000 x 1027 px - 72 dpi

| 47.7 kB | .png | 73.731 x 75.847 mm - 209 x 215 px - 72 dpi

| 69.9 kB | .jpg | 120.297 x 123.472 mm - 341 x 350 px - 72 dpi

Dimensional drawing basic component



ID: 1c235g01

| 64.7 kB | .cdr |

| 8.3 kB | .png | 74.083 x 51.506 mm - 210 x 146 px - 72 dpi

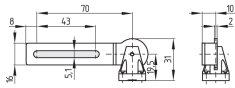
| 91.8 kB | .jpg | 352.778 x 245.181 mm - 1000 x 695 px - 72 dpi

Dimensional drawing actuator

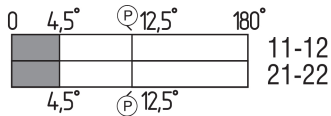
ID: 1c235b03

| 3.0 kB | .png | 74.083 x 52.211 mm - 210 x 148 px - 72 dpi

| 57.4 kB | .jpg | 352.778 x 248.003 mm - 1000 x 703 px - 72 dpi



Switch travel diagram



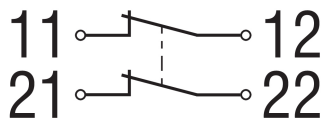
ID: kc235s08

| 19.6 kB | .cdr |

| 1.9 kB | .png | 74.083 x 25.753 mm - 210 x 73 px - 72 dpi

| 58.7 kB | .jpg | 352.778 x 122.061 mm - 1000 x 346 px - 72 dpi

Diagram



ID: k2o--k01

| 48.8 kB | .jpg | 352.778 x 125.236 mm - 1000 x 355 px - 72 dpi

| 2.3 kB | .png | 74.083 x 26.458 mm - 210 x 75 px - 72 dpi

Schmersal, Inc., 15 Skyline Drive, Hawthorne, NY 10532

The details and data referred to have been carefully checked. Images may diverge from original. Further technical data can be found in the manual. Technical amendments and errors possible.

Generated on: 21/09/2023, 11:38