



### T. 441-11Y-1224

- 2 Contacts
- Metal enclosure
- 2 cable entries M20
- Suitable for heavy duty
- 106 mm x 99 mm x 63 mm ( basic component)

## Data

### Ordering data

Product type description	T. 441-11Y-1224
Article number (order number)	101109329
EAN (European Article Number)	4030661019994
eCl@ss number, Version 9.0	27-27-06-90

### Certifications

Certificates	CCC EAC
--------------	------------

### General data

Product name	441 belt alignment switch
Standards	EN 60947-5-1
Active principle	mechanical
Enclosure material	Grey cast iron, galvanised
Enclosure coating material	painted
Material of the contacts, electrical	Silver
Gross weight	2075.000 g

### General data - Features

Number of openers	1
Number of shutters	1

## Mechanical data

Mechanical life, minimum	10,000,000 Operations
Contact opening	2 x 6 mm
Actuation direction	each time 60° right-hand side and left-hand side rotation

## Mechanical data - Connection technique

Terminal Connector	Screw connection
Cable section, minimum	1.5 mm <sup>2</sup>
Cable section, maximum	2.5 mm <sup>2</sup>

## Mechanical data - Dimensions

Height of sensor	99 mm
Length of sensor	63 mm
Width of sensor	106 mm
Diameter of Castor	32 mm
Height of the lever	194 mm
Width of the lever	32 mm
Length of the lever	32 mm

## Ambient conditions

Protection class	IP 65 to IEC/EN 60529
Ambient temperature, minimum	-30 °C
Ambient temperature, maximum	+90 °C

## Ambient conditions - Insulation value

Rated impulse withstand voltage	6 kV
---------------------------------	------

## Electrical data

Thermal test current	16 A
Utilisation category AC-15	400 VAC
Utilisation category AC-15	4 A
Switching element	NO contact, NC contact
Switching principle	Creep circuit element
Switching frequency	3,000 /h

## Pictures

### Product picture (catalogue individual photo)



ID: ktm44f03

| 506,2 kB | .jpg | 198.261 x 529.167 mm - 562 x 1500  
Pixel - 72 dpi

| 104,4 kB | .png | 74.083 x 197.556 mm - 210 x 560  
Pixel - 72 dpi

### Product picture (catalogue individual photo)

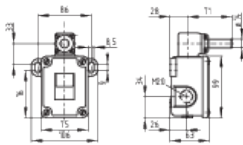


ID: kbandf05

| 384,3 kB | .jpg | 122.767 x 529.167 mm - 348 x 1500  
Pixel - 72 dpi

| 248,4 kB | .png | 74.083 x 319.264 mm - 210 x 905  
Pixel - 72 dpi

### Dimensional drawing basic component



ID: 1-441g03

| 8,0 kB | .png | 74.083 x 51.858 mm - 210 x 147 Pixel  
- 72 dpi

| 37,4 kB | .cdr |

| 93,0 kB | .jpg | 352.778 x 247.297 mm - 1000 x 701  
Pixel - 72 dpi

### Switch travel diagram

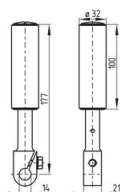


ID: kt441s06

| 1,0 kB | .png | 74.083 x 52.564 mm - 210 x 149 Pixel  
- 72 dpi

| 55,1 kB | .jpg | 352.778 x 159.456 mm - 1000 x 452  
Pixel - 72 dpi

### Dimensional drawing miscellaneous



ID: 1bandb02

| 53,9 kB | .jpg | 352.778 x 247.297 mm - 1000 x 701  
Pixel - 72 dpi

| 23,0 kB | .cdr |

K.A. Schmersal GmbH & Co. KG, Möddinghofe 3, D-42279 Wuppertal

The details and data referred to have been carefully checked. Images may diverge from original. Further technical data can be found in the manual. Technical amendments and errors possible.

Generated on 18.09.2020 19:27:13