

T2C470-33Y



- 6 Contacts
- Metal enclosure
- Case-hardened lever
- With latching end position
- 4 cable entries M 20 x 1.5
- 130 mm x 194 mm x 64 mm (basic component)
- Actuator heads can be repositioned by 4 x 90°
- Change in actuating direction by repositioning actuator head

Data

Ordering data

Product type description	T2C 470-33Y
Article number (order number)	101059736
EAN (European Article Number)	4030661037271
eCI@ss number, Version 9.0	27-27-06-01

Certifications

Certificates	EAC DNV GL
--------------	---------------

General data

Product name	470 fork lever 2C
Standards	EN 60947-5-1
Active principle	mechanical
Enclosure material	Grey cast iron, galvanised
Enclosure coating material	painted
Material of the contacts, electrical	Silver
Gross weight	2865.000 g

General data - Features

Number of openers	3
-------------------	---

Number of shutters 3

Mechanical data

Actuating element Fork lever
Mechanical life, minimum 10,000,000 Operations
Contact opening max. 2 x 6 mm
Actuating speed, minimum 1 mm/min
Actuating speed, maximum 0.5 m/s
Note (Actuating speed) Actuating speed with vertical actuating angle to switch axis

Mechanical data - Connection technique

Terminal Connector Screw connection
Cable section, minimum 1.5 mm²
Cable section, maximum 2.5 mm²
Note (Cable section) All indications about the cable section are including the conductor ferrules.
Wire cross-section 13 AWG

Mechanical data - Dimensions

Height of sensor 289 mm
Length of sensor 64 mm
Width of sensor 130 mm

Ambient conditions

Protection class IP 65 to IEC/EN 60529
Ambient temperature, minimum -30 °C
Ambient temperature, maximum +90 °C

Electrical data

Thermal test current 16 A
Utilisation category AC-15 400 VAC
Utilisation category AC-15 4 A
Switching element NO contact, NC contact
Note (Switching element) with double break
Switching principle Creep circuit element

Pictures

Product picture (catalogue individual photo)

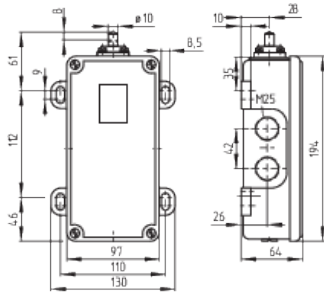


ID: kt-47f03

| 64,9 kB | .png | 74.083 x 130.175 mm - 210 x 369
Pixel - 72 dpi

| 898,0 kB | .jpg | 352.778 x 619.831 mm - 1000 x
1757 Pixel - 72 dpi

Dimensional drawing basic component



ID: 1t470g01

| 36,5 kB | .cdr |

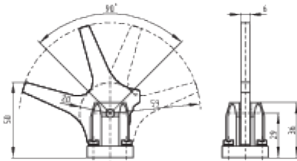
| 12,9 kB | .png | 74.083 x 67.733 mm - 210 x 192

Pixel - 72 dpi

| 168,6 kB | .jpg | 352.778 x 322.792 mm - 1000 x 915

Pixel - 72 dpi

Dimensional drawing actuator



ID: 1t422b06

| 9,7 kB | .png | 74.083 x 51.858 mm - 210 x 147 Pixel
- 72 dpi

| 107,8 kB | .jpg | 352.778 x 247.297 mm - 1000 x 701

Pixel - 72 dpi

Operating principle



ID: 235hz01

| 15,6 kB | .cdr |

| 229,3 kB | .jpg | 352.778 x 749.3 mm - 1000 x 2124

Pixel - 72 dpi

| 4,0 kB | .png | 74.083 x 157.339 mm - 210 x 446

Pixel - 72 dpi

K.A. Schmersal GmbH & Co. KG, Möddinghofe 3, D-42279 Wuppertal

The details and data referred to have been carefully checked. Images may diverge from original. Further technical data can be found in the manual. Technical amendments and errors possible.

Generated on 16.09.2020 23:44:41