

Datasheet - SLC440COM-ER-1370-30

Safety light curtains, Safety light grids / Safety light curtains / SLC440COM



(Minor differences between the printed image and the original product may exist!)

- Safety type 4 in accordance with IEC 61496-1
- User-friendly parameter setting, no tools required
- Reliable safety concept in case of interferences (EMC, welding sparks)
- Process safety with highest availability
- Integrated set-up tool

Ordering details

Product type description	SLC440COM-ER-1370-30
Article number	103003953
EAN Code	4030661435312
eCl@ss	27-27-27-04

Approval


Approval



Classification

Standards	EN ISO 13849-1, EN 62061
PL	up e
Control category	up 4
PFH value	8.05 x 10 ⁻⁹ /
SIL	up 3
Mission time	20 Years

Global Properties

Permanent light	SLC440COM Sicherheits-Lichtvorhang
Standards	EN 61496-1; EN 61496-2
Compliance with the Directives (Y/N) 	Yes
Operating resource protection class	Protection class 3
Safety type in accordance with IEC 61496-1	4
Materials	
- Material of the housings	Aluminium
Weight	2100
Beam coding (Y/N)	No
Protection field height	1370
Range of the protection field	300 - 10.000
Reaction time	20
Wave length of the sensors	880
Fade-out is possible (Y/N)	No
Override possible (Y/N)	No
reduced resolution (Y/N)	No
Clock control possible (Y/N)	No
Muting possible (Y/N)	No
Restart block (Y/N)	Yes
Master/slave function	No
Cascadable (Y/N)	No
Monitoring function of downstream devices (Y/N)	Yes
Recommended safety-monitoring module	SRB301

Mechanical data

Detection ability for test bodies	30
Number of beams	68
Design of electrical connection	Connector
- Wiring of the transmitter	connector plug M12, 4-pole
- Wiring of the receiver	connector plug M12, 5-pole
Cable length	100

Ambient conditions

Ambient temperature	
- Min. environmental temperature	-10
- Max. environmental temperature	+50
Storage and transport temperature	
- Min. Storage and transport temperature	-25
- Max. Storage and transport temperature	+70
Protection class	IP67 to IEC/EN 60529

Electrical data

Design of output switching element OSSD	PNP
Power consumption	
- Power consumption Transmitter	< 5
- Power consumption Receiver	< 10
Voltage type	DC
Switching voltage of the OSSD in high state	24 ± 10
Integrated contactor control (Y/N)	No

Outputs

Max. output current at secured output 250

Electrical data - Safety outputs

Number of secure semi-conductor outputs 2

Number of secure outputs with contact 0

LED switching conditions display

LED switching conditions display (Y/N) Yes

- Status and diagnostics Yes

- 7-segment display No

ATEX

Explosion protection categories for gases None

Explosion protected category for dusts None

Dimensions

Dimensions of the sensor

- Width of sensor 27.8

- Height of sensor 1411

- Length of sensor 33

notice

In case of failure (interruption of the 0 V supply) the maximum leakage current is 1 mA.

Included in delivery

Delivery scope of disposable system Transmitter + receiver, Mounting angle

Indication legend

A: total length (Protection field height + 81 mm)

A: total length (Protection field height + 81 mm)

Ordering code

SLC440COM-ER(1)-(2)

(1)

0330 Protection field height 330 mm

0410 Protection field height 410 mm

0490 Protection field height 490 mm

0570 Protection field height 570 mm

0650 Protection field height 650 mm

0730 Protection field height 730 mm

0810 Protection field height 810 mm

0890 Protection field height 890 mm

0970	Protection field height 970 mm
1050	Protection field height 1050 mm
1130	Protection field height 1130 mm
1210	Protection field height 1210 mm
1290	Protection field height 1290 mm
1370	Protection field height 1370 mm
1450	Protection field height 1450 mm
1530	Protection field height 1530 mm <i>(Only for Resolution 30 mm, 35 mm)</i>
1610	Protection field height 1610 mm <i>(Only for Resolution 30 mm, 35 mm)</i>
1690	Protection field height 1690 mm <i>(Only for Resolution 30 mm, 35 mm)</i>
1770	Protection field height 1770 mm <i>(Only for Resolution 30 mm, 35 mm)</i>
(2)	
14	Resolution 14 mm, Range 0,3 m ... 7 m
30	Resolution 30 mm, Range 0,3 m ... 10 m
35	Resolution 35 mm, Range 0,3 m ... 7 m

Documents

Operating instructions and Declaration of conformity (es) 415 kB, 25.09.2017

Code: mrl_slc-slg440com_es

Operating instructions and Declaration of conformity (br) 407 kB, 03.02.2015

Code: ace_mrl_slc-slg440com_br

Operating instructions and Declaration of conformity (fr) 452 kB, 16.10.2017

Code: mrl_slc-slg440com_fr

Operating instructions and Declaration of conformity (de) 400 kB, 13.09.2017

Code: mrl_slc-slg440com_de

Operating instructions and Declaration of conformity (cn) 649 kB, 23.11.2018

Code: mrl_slc-slg440com_cn

Operating instructions and Declaration of conformity (jp) 505 kB, 09.10.2017

Code: mrl_slc-slg440com_jp

Operating instructions and Declaration of conformity (it) 447 kB, 16.10.2017

Code: mrl_slc-slg440com_it

Operating instructions and Declaration of conformity (pt) 436 kB, 16.10.2017

Code: mrl_slc-slg440com_pt

Operating instructions and Declaration of conformity (pl) 469 kB, 02.03.2018

Code: mrl_slc-slg440com_pl

Operating instructions and Declaration of conformity (en) 416 kB, 13.09.2017

Code: mrl_slc-slg440com_en

Operating instructions and Declaration of conformity (nl) 448 kB, 02.03.2018

Code: mrl_slc-slg440com_nl

BG-test certificate (de, en) 1 MB, 25.03.2015

Code: z_slcp04

Brochure (it) 2 MB, 01.03.2018

Code: b_optoshort_it

Brochure (pt) 2 MB, 26.10.2018

Code: b_optoshort_pt

Brochure (es) 2 MB, 23.10.2018

Code: b_optoshort_es

Brochure (fr) 2 MB, 20.11.2018

Code: b_optoshort_fr

Brochure (en) 2 MB, 23.10.2018

Code: b_optoshort_en

Brochure (pl) 2 MB, 20.02.2019

Code: b_optoshort_pl

Brochure (de) 2 MB, 22.10.2018

Code: b_optoshort_de

Brochure (pt) 1 MB, 12.04.2018

Code: b_slc440-familie_pt

Brochure (de) 917 kB, 04.07.2018

Code: b_slc440-familie_de

Brochure (en) 1 MB, 04.07.2018

Code: b_slc440-familie_en

Brochure (fr) 1 MB, 12.04.2018

Code: b_slc440-familie_fr

Brochure (es) 1 MB, 12.04.2018

Code: b_slc440-familie_es

Brochure (nl) 1 MB, 04.07.2018

Code: b_slc440-familie_nl

Brochure (it) 1 MB, 12.04.2018

Code: b_slc440-familie_it

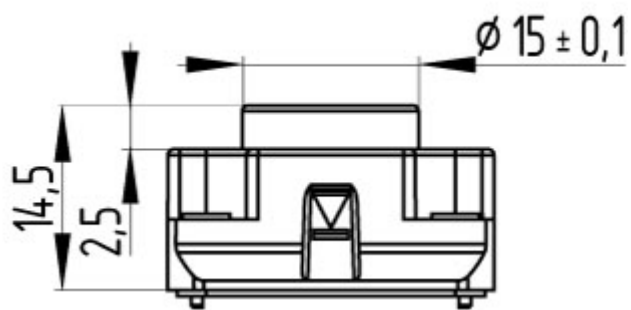
Images



Dimensional drawing (basic component)



Dimensional drawing (basic component)



Dimensional drawing (miscellaneous)



Wiring example

K.A. Schmersal GmbH & Co. KG, Mödinghofe 30, D-42279 Wuppertal

The data and values have been checked thoroughly. Technical modifications and errors excepted.

Generiert am 15.04.2019 - 18:05:25h Kasbase 3.3.0.F.64I