



NDP50SW

Data

Ordering data

Product type description	NDP50SW
Article number (order number)	101163572
EAN (European Article Number)	4250116200085
eCl@ss number, version 12.0	27-37-12-12
eCl@ss number, version 11.0	27-37-12-12
eCl@ss number, version 9.0	27-37-12-12
ETIM number, version 7.0	EC001038
ETIM number, version 6.0	EC001038

Approvals - Standards

Certificates	BG cULus CCC IPA
--------------	---------------------------

General data

Standards	EN IEC 62061 EN IEC 60947-5-1 EN IEC 60947-5-3 EN IEC 60947-5-5 EN IEC 60204-1 EN IEC 60947-1
Versions	round Push button
Design	Round
Sealing type	Membrane Lip gaskets
Material of the operators	ABS
Material of the front ring	ABS, chrome-plated
Material of the bellows	Silicone
Colour of the operating element	Black
Colour of the front ring	Silver
Colour of the bellows	White
Gross weight	50 g

General data - Features

Mounting flange	Yes
Fully insulated	Yes

Mechanical data

Actuating stroke	5 mm
Mounting	Mounting flange EFM
Tightening torque of the screw	0.6 Nm

Mechanical data - Dimensions

Height	45 mm
diameters for the actuating heads	50 mm

Diameter hole	22.3 mm
Diameter hole, with tolerance indication	22.3 + 0.4 mm
Thickness, of the front panel, minimum	1.5 mm
Thickness of the front panel, maximum	6 mm
Spacing	50 x 50 mm

Ambient conditions

Degree of protection	IP67 IP69K
Ambient temperature, minimum	-25 °C
Ambient temperature, maximum	+80 °C

Ordering code

Product type description:

-

(1)DT(8)(2)	Pushbutton
(1)DM(2)	Pushbutton with diaphragm for dust protection
(1)DL(8)(2)	Illuminated pushbutton
(1)DLM(2)	Illuminated pushbutton with diaphragm for dust protection
(1)ML(2)	Indicator light with flat collar
(1)MLH(2)	Indicator light with high collar
(1)DP(3)(8)(2)	Mushroom head impact button without latching
(1)DTP(3)(8)(2)	Mushroom head impact button without latching (only N-programm)
(1)DLP(3)(8)(2)	Mushroom head impact button illuminated, without latching (only N programme)
(1)DRR(3)(8)(2)	Mushroom head impact button with latching, unlock by turning and pulling (pulling only in N programme)
(1)DRZ(3)(8)(2)	Mushroom head impact button with latching, unlock by pulling

(1)WS21(4)(5)	Selector switch with 2 positions:
(1)WT21(4)(5)	Selector switch with 1 momentary position
(1)WS32(4)(5)	Selector switch with 3 maintained positions
(1)WT32(4)(5)	Wahlschalter mit 2 Taststellungen
(1)WST32(4)(5)	Selector switch: switching, latching
(1)WTS32(4)(5)	Selector switch: latching, switching
(1)SS21S(4)(5)	Key-operated selector switch with 2 maintained positions
(1)ST21S(4)(5)	Key-operated selector switch with 1 momentary position
(1)SS32S(4)(5)	Key-operated selector switch with 3 maintained positions
(1)ST32S(4)(5)	Key-operated selector switch with 2 momentary positions, left and right
(1)SST32S(4)(5)	Key-operated selector switch: switching, latching
(1)STS32S(4)(5)	Key-operated selector switch: latching, switching

B

Blanking plug

(1)

-	Command and signalling devices:
E	"E" program
N	"N" program
R	"R" program

(2)

-	Colour of button surface:
SW	Black
GB	Yellow
RT	Red
GN	Green
WS	White
BL	Blue
GR	Grey

(3)

-	Head diameter of mushroom head impact button 30 mm:
30	30 mm
35	35 mm
40	40 mm
42	42 mm
45	45 mm
50	50 mm
55	55 mm
70	70 mm

(4)

-	Toggle length in mm:
without	Short toggle
.1	Long toggle

(5)

-	Colour of toggle:
without	Grey
WS	White

(6)

-	Key-withdrawal position (3 positions):
1	Position left
2	Position middle
3	Position right

(7)

-	Key-withdrawal position (2 positions):
1	Position left
2	Position right

(8)

-	Colour of diaphragm (only N programme):
without	White
GR/	Black
BL/	Blue

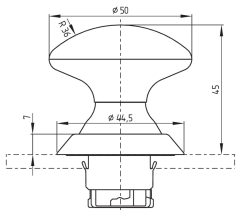
Pictures

Product picture (catalogue individual photo)



ID: kndp-f06
| 578.7 kB | .jpg | 352.778 x 438.503 mm - 1000 x 1243 px - 72 dpi
| 51.5 kB | .png | 74.083 x 92.075 mm - 210 x 261 px - 72 dpi

Dimensional drawing basic component



ID: 1ndp-g01
| 35.4 kB | .cdr |
| 3.7 kB | .png | 74.083 x 51.153 mm - 210 x 145 px - 72 dpi
| 70.6 kB | .jpg | 352.778 x 243.769 mm - 1000 x 691 px - 72 dpi

Schmersal, Inc., 15 Skyline Drive, Hawthorne, NY 10532

The details and data referred to have been carefully checked. Images may diverge from original. Further technical data can be found in the manual. Technical amendments and errors possible.

Generated on: 10/18/2022, 4:13 PM