



MV7H 330-11Y-M20

- Metal enclosure
- Long life
- 40 mm x 76 mm x 40 mm (basic component)
- Suitable for low actuating speeds
- 1 Cable entry M 20 x 1.5
- free of silicon
- proved in power station applications
- Actuator head can be repositioned in steps 4 x 90°
- Continuous adjustment of lever position 360°
- Lever can be transposed by 180°

Data

Ordering data

Product type description	MV7H 330-11Y-M20
Article number (order number)	131158933
EAN (European Article Number)	8905236106934
eCl@ss number, version 12.0	27-27-06-01
eCl@ss number, version 11.0	27-27-06-01
eCl@ss number, version 9.0	27-27-06-01
ETIM number, version 7.0	EC000030
ETIM number, version 6.0	EC000030

General data

Standards	EN IEC 60947-5-1
Working principle	mechanical
Slide form	Castor

Enclosure material	Light-alloy diecast, paint finish
Enclosure coating material	painted
Material of the contacts, electrical	Silver
Gross weight	407 g

General data - Features

Number of normally closed (NC)	1
Number of normally open (NO)	1

Safety classification - Safety outputs

B _{10D} Normally-closed contact (NC)	20,000,000 Operations
---	-----------------------

Mechanical data

Actuating element	Roller lever
Contact opening	2 x 0.5 mm
Actuating speed, minimum	1 mm/min
Actuating torque	0.5 Nm
Repeat accuracy of switching points	0.02

Mechanical data - Connection technique

Termination	Screw terminals M20 x 1.5
Cable section, maximum	2.5 mm ²
Note (Cable section)	All indications including the conductor ferrules.
Wire cross-section	13 AWG

Mechanical data - Dimensions

Length of sensor	40 mm
------------------	-------

Width of sensor	40 mm
Height of sensor	232 mm
Width of Castor	9 mm
Diameter of Castor	37 mm

Ambient conditions

Degree of protection	IP65
Ambient temperature, minimum	-30 °C
Resistance to shock	50 g / 6 ms

Ambient conditions - Insulation values

Rated insulation voltage U_i	250 V
Rated impulse withstand voltage U_{imp}	4 kV

Electrical data

Thermal test current	6 A
Utilisation category AC-15	230 VAC
Utilisation category AC-15	2.5 A
Switching element	NO contact, NC contact
Note (Switching element)	galvanically separated contact bridges
Switching principle	Snap action
Bounce duration, maximum	43,221 ms
Switchover time, maximum	10 ms

Pictures

Product picture (catalogue individual photo)

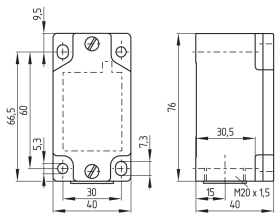


ID: km330f03

| 389.5 kB | .jpg | 127.353 x 432.153 mm - 361 x 1225 px - 72 dpi

| 159.1 kB | .png | 74.083 x 251.178 mm - 210 x 712 px - 72 dpi

Dimensional drawing basic component



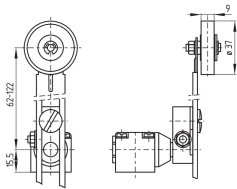
ID: 1m330g01

| 24.6 kB | .cdr |

| 4.0 kB | .png | 74.083 x 51.858 mm - 210 x 147 px - 72 dpi

| 107.3 kB | .jpg | 352.778 x 247.297 mm - 1000 x 701 px - 72 dpi

Dimensional drawing actuator

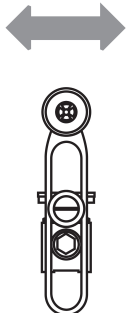


ID: 1m330b03

| 9.8 kB | .png | 74.083 x 51.858 mm - 210 x 147 px - 72 dpi

| 98.8 kB | .jpg | 352.778 x 247.297 mm - 1000 x 701 px - 72 dpi

Operating principle



ID: 235hz02

| 16.8 kB | .cdr |

| 212.6 kB | .jpg | 352.778 x 870.656 mm - 1000 x 2468 px - 72 dpi

| 3.8 kB | .png | 74.083 x 182.739 mm - 210 x 518 px - 72 dpi

Schmersal, Inc., 15 Skyline Drive, Hawthorne, NY 10532

The details and data referred to have been carefully checked. Images may diverge from original. Further technical data can be found in the manual. Technical amendments and errors possible.

Generated on: 10/18/2022, 4:12 PM