



## MJ 064-30Y

- Metal enclosure
- 3 or 4 Contacts
- 2 cable entries M 25 x 1.5
- 184 mm x 111 mm x 149 mm (basic component)
- Actuator heads can be repositioned by 4 x 90°

### Data

#### Ordering data

Product type description	MJ 064-30Y
Article number (order number)	101056941
eCl@ss number, Version 9.0	27-27-06-01

#### General data

Product name	064 offset roller lever J
Standards	EN 60947-5-1
Active principle	mechanical
Slide form	Castor
Enclosure material	Grey cast iron, galvanised
Enclosure coating material	painted
Material of the contacts, electrical	Silver
Roller material	Plastic
Gross weight	3835.000 g

#### General data - Features

Number of shutters	3
--------------------	---

#### Mechanical data

Actuating element	Offset roller lever
Mechanical life, minimum	30,000 Operations
Actuating angle, from left of switch axis	30 °

Actuating angle, from right of switch axis	45 °
Contact opening	2 x 4 mm
Actuating speed, minimum	600 mm/min
Actuating speed, maximum	1 m/s
Note (Actuating speed)	Actuating speed with vertical actuating angle to switch axis

### Mechanical data - Connection technique

Terminal Connector	Screw connection
Cable section, minimum	1.5 mm <sup>2</sup>
Cable section, maximum	4 mm <sup>2</sup>
Note (Cable section)	All indications about the cable section are including the conductor ferrules.
Wire cross-section	11 AWG

### Mechanical data - Dimensions

Height of sensor	90 mm
Length of sensor	149 mm
Width of Castor	9 mm
Diameter of Castor	36 mm

### Ambient conditions

Protection class	IP 65 to IEC/EN 60529
Ambient temperature, minimum	-30 °C
Ambient temperature, maximum	+90 °C

### Ambient conditions - Insulation value

Rated impulse withstand voltage	6 kV
---------------------------------	------

### Electrical data

Thermal test current	25 A
Utilisation category AC-15	400 VAC
Utilisation category AC-15	25 A
Switching element	Normally open contact (NO) with double break
Note (Switching element)	galvanically separated contact bridges
Switching principle	Snap switch element
Switching frequency	1,000 /h

### Notes

Note (General)	Actuation from the right should be avoided, since this reduces the mechanical life of the position switch.
----------------	--

## Ordering code

Product type description:

T(1) 064-(2)Y-(3)

(1)

- S** Plunger S
- J** Offset roller lever J
- X** Offset roller lever X

(2)

- 03** 3 NC contact
- 12** 1 NO contact/2 NC contacts
- 21** 2 NO contacts/1 NC contact
- 30** 3 NO contacts
- 04** 4 NC contact
- 13** 1 NO contacts/3 NC contact
- 22** 2 NO contacts/2 NC contact
- 31** 3 NO contacts/1 NC contact
- 40** 4 NO contacts

(3)

- UE** Slow action with overlapping contacts
- H** Slow action with staggered contacts
- R** Latching 2 x 45°

## Pictures

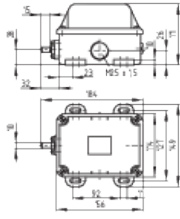
### Product picture (catalogue individual photo)



ID: ktm-jf01

| 485,7 kB | .jpg | 352.425 x 377.825 mm - 999 x 1071  
Pixel - 72 dpi  
| 39,6 kB | .png | 74.083 x 79.375 mm - 210 x 225  
Pixel - 72 dpi

### Dimensional drawing basic component



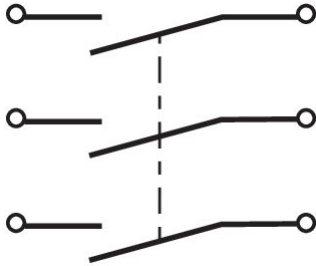
ID: 1t-64g01

| 103,5 kB | .jpg | 352.778 x 247.297 mm - 1000 x 701 Pixel - 72 dpi

| 8,9 kB | .png | 74.083 x 51.858 mm - 210 x 147 Pixel - 72 dpi

| 33,2 kB | .cdr |

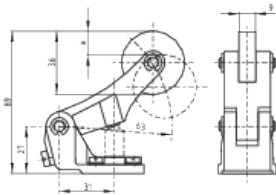
## Diagram



ID: k--3sk02

| 18,4 kB | .cdr |

## Dimensional drawing actuator



ID: 1tm-jb01

| 11,4 kB | .png | 74.083 x 51.153 mm - 210 x 145 Pixel - 72 dpi

| 115,7 kB | .jpg | 352.778 x 243.769 mm - 1000 x 691 Pixel - 72 dpi

## Operating principle



ID: 235rz03

| 131,9 kB | .jpg | 352.778 x 773.642 mm - 1000 x 2193 Pixel - 72 dpi

| 2,7 kB | .png | 74.083 x 162.278 mm - 210 x 460 Pixel - 72 dpi

| 15,5 kB | .cdr |

K.A. Schmersal GmbH & Co. KG, Möddinghofe 3, D-42279 Wuppertal

The details and data referred to have been carefully checked. Images may diverge from original. Further technical data can be found in the manual. Technical amendments and errors possible.

Generated on 14.09.2020 17:19:04