



### M.441-11Y-M20-243

- 2 Contacts
- Metal enclosure
- 2 cable entries M20
- Suitable for heavy duty
- 106 mm x 99 mm x 63 mm ( basic component)
- Continuous adjustment of lever position 360°

## Data

### Ordering data

Product type description	M. 441-11Y-243
Article number (order number)	101168784
EAN (European Article Number)	4030661224435
eCl@ss number, Version 9.0	27-27-06-90

### Certifications

Certificates	CCC EAC
--------------	------------

### General data

Product name	441 belt alignment switch
Standards	EN 60947-5-1
Active principle	mechanical
Enclosure material	Grey cast iron, galvanised
Enclosure coating material	painted
Material of the contacts, electrical	Silver
Gross weight	1780.000 g

### General data - Features

Number of openers	1
Number of shutters	1

### Mechanical data

Mechanical life, minimum	10,000,000 Operations
--------------------------	-----------------------

Contact opening	2 x 2.5 mm
Actuation direction	each time 60° right-hand side and left-hand side rotation

### **Mechanical data - Connection technique**

Terminal Connector	Screw connection
Cable section, minimum	1.5 mm <sup>2</sup>
Cable section, maximum	2.5 mm <sup>2</sup>

### **Mechanical data - Dimensions**

Height of sensor	99 mm
Length of sensor	63 mm
Width of sensor	106 mm
Diameter of Castor	25 mm
Height of the lever	141 mm
Width of the lever	25 mm
Length of the lever	25 mm

### **Ambient conditions**

Protection class	IP 65 to IEC/EN 60529
Ambient temperature, minimum	-30 °C
Ambient temperature, maximum	+90 °C

### **Ambient conditions - Insulation value**

Rated impulse withstand voltage	4 kV
---------------------------------	------

### **Electrical data**

Thermal test current	16 A
Utilisation category AC-15	230 VAC
Utilisation category AC-15	4 A
Switching element	NO contact, NC contact
Switching principle	Snap switch element
Switching frequency	3,000 /h

### **Pictures**

#### **Product picture (catalogue individual photo)**



ID: ktm44f04

| 97,5 kB | .png | 74.083 x 174.625 mm - 210 x 495

Pixel - 72 dpi

| 535,5 kB | .jpg | 224.367 x 529.167 mm - 636 x 1500

Pixel - 72 dpi

### Product picture (catalogue individual photo)



ID: kbandf04

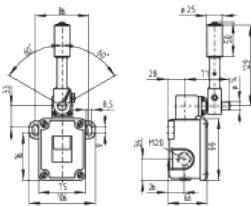
| 195,8 kB | .png | 74.083 x 261.408 mm - 210 x 741

Pixel - 72 dpi

| 439,0 kB | .jpg | 149.931 x 529.167 mm - 425 x 1500

Pixel - 72 dpi

### Dimensional drawing basic component



ID: 1-441g02

| 130,0 kB | .jpg | 352.778 x 247.297 mm - 1000 x 701

Pixel - 72 dpi

| 10,6 kB | .png | 74.083 x 51.858 mm - 210 x 147

Pixel - 72 dpi

| 41,5 kB | .cdr |

### Switch travel diagram



ID: kt441s12

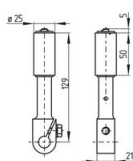
| 1,3 kB | .png | 74.083 x 52.564 mm - 210 x 149 Pixel

- 72 dpi

| 78,0 kB | .jpg | 352.778 x 260.703 mm - 1000 x 739

Pixel - 72 dpi

### Dimensional drawing miscellaneous



ID: 1bandb03

| 48,3 kB | .jpg | 352.778 x 247.297 mm - 1000 x 701

Pixel - 72 dpi

| 22,3 kB | .cdr |

K.A. Schmersal GmbH & Co. KG, Möddinghofe 3, D-42279 Wuppertal

The details and data referred to have been carefully checked. Images may diverge from original. Further technical data can be found in the manual. Technical amendments and errors possible.

Generated on 18.09.2020 19:14:03