



## BETAETIGER AZM 161-B1S

- Straight actuator
- Particularly suitable for sliding doors

### Data

#### Ordering data

Product type description	BETAETIGER AZM 161-B1S
Article number (order number)	101171125
EAN (European Article Number)	4030661298689
eCl@ss number, Version 9.0	27-27-26-06
eCl@ss number, Version 11.0	27-27-26-06

#### General data

Material of the actuator	Stainless steel (V2A)
Gross weight	20 g

#### Mechanical data

Actuator	straight
----------	----------

#### Scope of delivery

Delivery scope of Mounting material	Tamperproof screws
-------------------------------------	--------------------

## Notes

Note (General)

minimum actuating radius on hinged guards in line with the plane of the actuator 150 mm  
minimum actuating radius on rotating guard systems via the narrow edge of the actuator 180 mm

## Documents

### Operating instructions (supplementary sheet/quick guide)

AZM 161 Actuator (115.4 kB, 05/10/2019, Revision F)

## Pictures

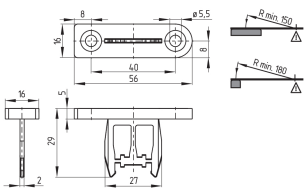
### Product picture (catalogue individual photo)



ID: kazm1f45

| 7.3 MB | .tif | 195.4 x 130.2 mm - 1954 x 1302 px - 254 dpi  
| 132.9 kB | .jpg | 352.778 x 235.303 mm - 1000 x 667 px - 72 dpi  
| 12.4 kB | .png | 74.083 x 49.389 mm - 210 x 140 px - 72 dpi

### Dimensional drawing actuator



ID: 1azm1b24

| 41.6 kB | .cdr |  
| 9.1 kB | .png | 74.083 x 51.506 mm - 210 x 146 px - 72 dpi  
| 101.3 kB | .jpg | 352.778 x 245.181 mm - 1000 x 695 px - 72 dpi

### Actuating radius



ID: kazm1r01

| 19.8 kB | .cdr |

## Actuating radius



ID: kazm1r22  
| 20.7 kB | .cdr |

Schmersal, Inc., 15 Skyline Drive, Hawthorne, NY 10532

The details and data referred to have been carefully checked. Images may diverge from original. Further technical data can be found in the manual. Technical amendments and errors possible.

Generated on: 8/4/2021, 6:52 PM