



## AZ/AZM201-B30-LTAG1P20

- One-hand emergency exit, even in de-energised condition
- Actuator for hinged guards
- Easy and intuitive operation
- No risk of injury from protruding actuator
- No supplementary door handles required
- Does not protrude into the door opening

## Data

### Ordering data

Product type description	AZ/AZM201-B30-LTAG1P20
Article number (order number)	103027215
EAN (European Article Number)	4030661519517
eCl@ss number, Version 9.0	27-27-26-06
eCl@ss number, Version 11.0	27-27-26-06
ETIM number, version 7.0	EC001487
ETIM number, version 6.0	EC001487

### Approval - Standards

Note	Certification in combination with the AZ /AZM 201 devices
------	---

### General data

Enclosure material	Plastic, glass-fibre reinforced thermoplastic, self-extinguishing
Material of the actuator	Zinc die-cast
Material of the operators	Aluminium, plastic coating
Emergency exit material	Metal, plastic-coated

Gross weight 1,497 g

### General data - Features

Emergency exit Yes

### Mechanical data

Grip handle  
Mechanical life, minimum 1,000,000 Operations  
Door hinge Left  
Clamping force in accordance with EN ISO 14119  $F_{zh}$  2,000 N  
Clamping force, maximum F max 2,600 N  
Actuator mounted Outside

### Mechanical data - Dimensions

Length of the actuator 60 mm  
Width of the actuator 115 mm  
Height of the actuator 115 mm  
Width of the emergency exit 115 mm  
Height of the emergency exit 115 mm

### Scope of delivery

Included in delivery The safety switch / solenoid interlock and the actuator unit must be ordered separately.: The safety switch / solenoid interlock and the actuator unit must be ordered separately.

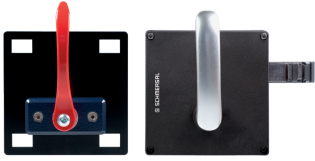
## Documents

### Operating instructions and Declaration of conformity

AZ/AZM201-B30 / AZ/AZM 200-B30 (1.1 MB, 25.03.2021)

# Pictures

## Product picture (catalogue individual photo)

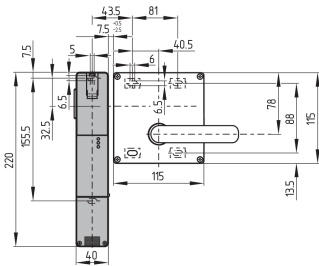


ID: kb-30f06

| 266.4 kB | .jpg | 352.778 x 184.503 mm - 1000 x 523 px - 72 dpi

| 18.8 kB | .png | 74.083 x 38.806 mm - 210 x 110 px - 72 dpi

## Dimensional drawing basic component

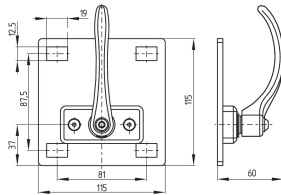


ID: 1azm2m37

| 134.9 kB | .jpg | 352.778 x 289.278 mm - 1000 x 820 px - 72 dpi

| 3.9 kB | .png | 74.083 x 60.678 mm - 210 x 172 px - 72 dpi

## Dimensional drawing actuator



ID: 1azm2b10

| 9.2 kB | .png | 74.083 x 51.506 mm - 210 x 146 px - 72 dpi

| 113.7 kB | .jpg | 352.778 x 245.886 mm - 1000 x 697 px - 72 dpi

Schmersal Ltd., Sparrowhawk Close, WR14 1GL Malvern

The details and data referred to have been carefully checked. Images may diverge from original. Further technical data can be found in the manual. Technical amendments and errors possible.

Generated on: 06/01/2022, 15:33