



ZS 335-02Z-M20

- Snap action with constant contact pressure up to switching point
- 1 Cable entry M 20 x 1.5
- Metal enclosure
- Wide range of alternative actuators
- Good resistance to oil and petroleum spirit
- 40,5 mm x 76 mm x 38 mm
- Actuator heads can be repositioned by 4 x 90°
- Design to EN 50041

Data

Ordering data

Product type description	ZS 335-02Z-M20
Article number (order number)	151169933

Approvals - Standards

Certificates	cULus CCC
--------------	--------------

General data

Housing construction form	Norm construction design
Actuator type to EN 50041	B
Housing material	Light alloy die-casting
Housing coating material	painted
Gross weight	185 g

General data - Features

Safety functions Yes

Number of safety contacts 2

Safety classification

Standards BG-GS-ET-15
EN ISO 13849-1
EN IEC 60947-5-1

Mission time 20 Year(s)

Safety classification - Safety outputs

B_{10D} Normally-closed contact (NC) 20,000,000 Operations

Mechanical data

Actuating element Plunger

Mechanical life, minimum 30,000,000 Operations

Actuating force, minimum 12 N

Actuating speed, maximum 0.5 m/s

Note Bounce duration Bounce duration in accordance with actuating speed

Mechanical data - Connection technique

Termination Screw terminals M20 x 1.5

Cable section, minimum 0.75 mm²

Cable section, maximum 2.5 mm²

Note (Cable section) All indications including the conductor ferrules.

Mechanical data - connector side B

Connector typ	Female connector
---------------	------------------

Mechanical data - Dimensions

Length of sensor	38 mm
Width of sensor	40.5 mm
Height of sensor	103.5 mm

Ambient conditions

Degree of protection	IP65 IP67
Ambient temperature	-30 ... +80 °C

Ambient conditions - Insulation values

Rated insulation voltage U_i	500 V
Rated impulse withstand voltage U_{imp}	6 kV

Electrical data

Thermal test current	10 A
Required rated short-circuit current	1,000 A
Utilisation category AC-15	230 VAC
Utilisation category AC-15	4 A
Utilisation category DC-13	24 VDC
Utilisation category DC-13	4 A
Switching element	Opener (NC)
Switching principle	Snap action
Switching frequency	5,000 /h

Switchover time, maximum	2 ms
Material of the contacts, electrical	Silver

Ordering code

Product type description:

(1)(2) 3(3)-(4)Z(5)-(6)-(7)-(8)-(9)

(1)	
Z	Snap action
T	Slow action (not for AF/S)
(2)	
S	Plunger S
R	Roller plunger R
H	Roller lever H
10H	Rod lever 10H
7H	Roller lever 7H
1K	Offset roller lever 1K
3K	Angle roller lever 3K
RMS	Brass roller
(3)	
35	slim design
56	large design
(4)	
11	1 NO contacts/1 NC contact
02	2 NC contact
20	2 NO contacts (not suitable for safety applications)
01/01	1 NC contact left / 1 NC contact right
12	1 NO contact/2 NC contacts

03	3 NC contact
(5)	
H	Slow action with staggered contacts
UE	Slow action with overlapping contacts
2272	2272 Special roller bolt with collar
1183	with aluminium rod
1699-1	Exterior stainless steel bolts and clamp
(6)	
G24	with LED
(7)	
without	Cable entry M20
NPT	Cable entry NPT 1/2"
ST	M12 connector with A-coding (Caution! According to EN 60204-1, the versions with connector must only be used in PELV circuits.)
ST-2310	M12 connector with B-coding (Caution! According to EN 60204-1, the versions with connector must only be used in PELV circuits.)
(8)	
2138	Roller lever 7H for position switches with safety function
(9)	
1637	Gold-plated contacts

Pictures

Product picture (catalogue individual photo)

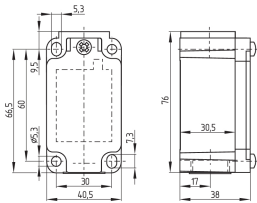


ID: k335sf01

| 939.8 kB | .jpg | 352.778 x 759.178 mm - 1000 x 2152 px - 72 dpi

| 87.8 kB | .png | 74.083 x 159.456 mm - 210 x 452 px - 72 dpi

Dimensional drawing basic component



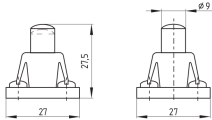
ID: 1-335g01

| 96.7 kB | .cdr |

| 4.5 kB | .png | 74.083 x 51.506 mm - 210 x 146 px - 72 dpi

| 105.8 kB | .jpg | 352.778 x 245.886 mm - 1000 x 697 px - 72 dpi

Dimensional drawing actuator



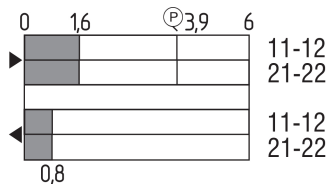
ID: 1s336g01

| 48.9 kB | .cdr |

| 2.7 kB | .png | 74.083 x 52.211 mm - 210 x 148 px - 72 dpi

| 52.6 kB | .jpg | 352.778 x 248.003 mm - 1000 x 703 px - 72 dpi

Switch travel diagram



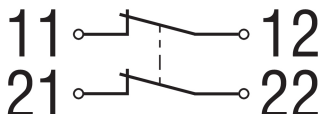
ID: kr335s11

| 25.6 kB | .cdr |

| 2.2 kB | .png | 74.083 x 40.922 mm - 210 x 116 px - 72 dpi

| 70.3 kB | .jpg | 352.778 x 195.086 mm - 1000 x 553 px - 72 dpi

Diagram



ID: k2o--k01

| 48.8 kB | .jpg | 352.778 x 125.236 mm - 1000 x 355 px - 72 dpi

| 2.3 kB | .png | 74.083 x 26.458 mm - 210 x 75 px - 72 dpi

The details and data referred to have been carefully checked. Images may diverge from original. Further technical data can be found in the manual. Technical amendments and errors possible.

Generated on: 8/21/2023, 5:29 PM