



ZR 235-11Z-M20

- Snap action with constant contact pressure up to switching point
- 1 Cable entry M 20 x 1.5
- Metal enclosure
- Wide range of alternative actuators
- Good resistance to oil and petroleum spirit
- 30 mm x 63,5 mm x 30 mm
- Actuator heads can be repositioned by 4 x 90°
- Mounting details to EN 50047

Data

Ordering data

Product type description	ZR 235-11Z-M20
Article number (order number)	151152265
eCl@ss number, version 12.0	27-27-26-01
eCl@ss number, version 11.0	27-27-26-01
eCl@ss number, version 9.0	27-27-26-01
ETIM number, version 7.0	EC000030
ETIM number, version 6.0	EC000030

Approvals - Standards

Certificates	cULus CCC
--------------	--------------

General data

Standards	BG-GS-ET-15 EN ISO 13849-1 EN IEC 60947-5-1
Housing construction form	Norm construction design
Actuator type to EN 50047	c
Housing material	Metal, zinc die-cast
Gross weight	150 g

General data - Features

Safety functions	Yes
Number of auxiliary contacts	1
Number of safety contacts	1

Safety classification

Standards	EN ISO 13849-1
Mission time	20 Year(s)

Safety classification - Safety outputs

B _{10D} Normally-closed contact (NC)	20,000,000 Operations
---	-----------------------

Mechanical data

Actuating element	Roller plunger
Mechanical life, minimum	20,000,000 Operations
Actuating force, minimum	9 N
Positive break force, minimum	19 N
Actuating speed, minimum	20 mm/min
Actuating speed, maximum	1 m/s
Note (Actuating speed)	Actuating speed with actuating angle 30° to switch axis

Mechanical data - Connection technique

Termination	Screw terminals M20 x 1.5
Cable section, minimum	0.75 mm ²
Cable section, maximum	2.5 mm ²
Note (Cable section)	All indications including the conductor ferrules.

Mechanical data - Dimensions

Length of sensor	30 mm
Width of sensor	30 mm
Height of sensor	86 mm

Ambient conditions

Degree of protection	IP65 IP67
Ambient temperature	-30 ... +80 °C

Ambient conditions - Insulation values

Rated insulation voltage U_i	500 V
Rated impulse withstand voltage U_{imp}	6 kV

Electrical data

Thermal test current	10 A
Required rated short-circuit current	1,000 A
Utilisation category AC-15	230 VAC
Utilisation category AC-15	4 A
Utilisation category DC-13	24 VDC

Utilisation category DC-13	1 A
Switching element	NO contact, NC contact
Switching principle	Snap action
Bounce duration, maximum	3 ms
Switching frequency	5,000 /h
Switchover time, minimum	5.5 ms
Material of the contacts, electrical	Silver

Ordering code

Product type description:

(1)(2) 2(3)5-(4)Z(5)-(6)-(7)-(8)-(9)

(1)

Z	Snap action
T	Slow action (not for AF/S)

(2)

S	Plunger S
R	Roller plunger R
4S	Plunger 4S
4R	Roller plunger 4R
1R	Offset roller lever 1R
K	Offset roller lever K
3K	Angle roller lever 3K
4K	Angle roller lever 4K
K4	Angle roller lever K4
1H	Roller lever 1H
7H	Roller lever 7H
10H	Rod lever 10H
12H	Roller lever 12H
14H	Roller lever 14H

AF	Spring rod lever AF
RMS	Brass roller
(3)	
35	slim design
56	large design
(4)	
02	2 NC contact
11	1 NO contacts/1 NC contact
20	2 NO contacts, (switches with 2 NO contacts are not suitable for safety applications)
(5)	
H	Slow action with staggered contacts
UE	Slow action with overlapping contacts
Z	additional seal between attachment and housing
(6)	
M16	cable entry M16
without	Cable entry M20
ID	Cut clamps
NPT	Cable entry NPT 1/2"
ST	M12 connector with A-coding (Caution! According to EN 60204-1, the versions with connector must only be used in PELV circuits.)
ST-2310	M12 connector with B-coding (Caution! According to EN 60204-1, the versions with connector must only be used in PELV circuits.)
(7)	
2574	Enclosure with L-shaped mounting holes (horizontally or vertically adjustable)

(8)

2138

Roller lever 7H for position switches with safety function

(9)

1637

Gold-plated contacts

Pictures

Product picture (catalogue individual photo)

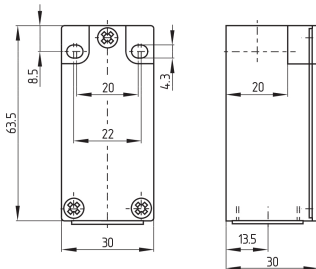


ID: k235rf01

| 724.9 kB | .jpg | 352.778 x 729.192 mm - 1000 x 2067 px - 72 dpi

| 73.9 kB | .png | 74.083 x 153.106 mm - 210 x 434 px - 72 dpi

Dimensional drawing basic component

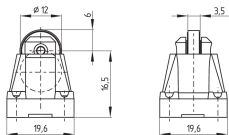


ID: 1-235g01

| 4.0 kB | .png | 74.083 x 61.383 mm - 210 x 174 px - 72 dpi

| 114.7 kB | .jpg | 352.778 x 293.158 mm - 1000 x 831 px - 72 dpi

Dimensional drawing actuator

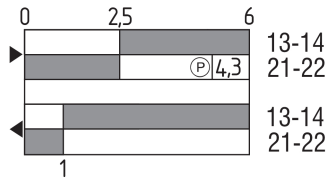


ID: 1r236g01

| 7.4 kB | .png | 74.083 x 51.858 mm - 210 x 147 px - 72 dpi

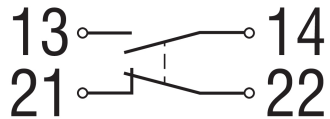
| 76.5 kB | .jpg | 352.778 x 247.297 mm - 1000 x 701 px - 72 dpi

Switch travel diagram



ID: kr235s12
| 25.8 kB | .cdr |
| 2.4 kB | .png | 74.083 x 39.158 mm - 210 x 111 px - 72 dpi
| 69.2 kB | .jpg | 352.778 x 187.325 mm - 1000 x 531 px - 72 dpi

Diagram



ID: k1o1sk01
| 52.2 kB | .jpg | 352.778 x 143.581 mm - 1000 x 407 px - 72 dpi
| 2.6 kB | .png | 74.083 x 29.986 mm - 210 x 85 px - 72 dpi

Schmersal, Inc., 15 Skyline Drive, Hawthorne, NY 10532

The details and data referred to have been carefully checked. Images may diverge from original. Further technical data can be found in the manual. Technical amendments and errors possible.

Generated on: 8/21/2023, 5:15 PM