

WORK STATION ACCESSORY SELECTION GUIDE

Part Number	Description								
		SCE-642424WS	SCE-642424SSWS	SCE-642432WS	SCE-642432SSWS	SCE-342424WS	SCE-342424SSWS	SCE-66ST2626WS	SCE-66ST2626SSWS
SCE-20POS	Pullout Shelf	•	•			•	•		
SCE-22POS	Pullout Shelf							•	•
SCE-26POS	Pullout Shelf			•	•				
SCE-22VEPOS	Vented Pullout Shelf							•	•
SCE-20STS	Stationary Shelf	•	•			•	•		
SCE-22STS	Stationary Shelf							•	•
SCE-26STS	Stationary Shelf			•	•				
SCE-20VESTS	Vented Stationary Shelf	•	•			•	•		
SCE-22VESTS	Vented Stationary Shelf							•	•
SCE-26VESTS	Vented Stationary Shelf			•	•				
SCE-8STS	Monitor Shelf							•	•
SCE-8VESTS	Vented Monitor Shelf							•	•
SCE-STMMK	Monitor Mounting Bracket	•	•	•	•			•	•
SCE-60RA19WS	Type RA Top Rack Angle	•	•	•	•	•	•		
SCE-60RA24WS	Type RA Bottom Rack Angle	•	•	•	•				
SCE-60RP19WS	Type RP Top Rack Angle	•	•	•	•	•	•		
SCE-60RP24F6	Type RP Bottom Rack Angle	•	•	•	•				
SCE-STWSPL	Pencil Edge/Palm Rest							•	
SCE-STWSPLSS	Pencil Edge/Palm Rest								•
SCE-PSK24	Panel Support	•	•			•	•	•	•
SCE-PSK32	Panel Support			•	•				
SCE-60P24WS	Side Mount Plate	•	•			•	•	•	•
SCE-60P32WS	Side Mount Plate			•	•				
SCE-SB18	Support Bracket	•	•	•	•	•	•		
SCE-LPD2	Leveling Pad	•	•	•	•	•	•	•	•
SCE-STWBTD	Blank Top Door							•	
SCE-STWSSBTD	Blank Top Door - Stainless Steel								•
SCE-WSBTD	Blank Top Door	•		•		•			
SCE-WSSBTD	Blank Top Door - Stainless Steel		•		•	•			
SCE-PE22	Pedestal					•			
SCE-PE22SS	Pedestal - Stainless Steel						•		
SCE-24PEBASE	Pedestal Base					•			
SCE-24PEBASESS	Pedestal Base - Stainless Steel						•		
SCE-P2424WS	Plinth Base	•				•			
SCE-P2432WS	Plinth Base			•					
SCE-P2626WS	Plinth Base							•	
SCE-P2424SSWS	Plinth Base - Stainless Steel		•				•		
SCE-P2432SSWS	Plinth Base - Stainless Steel				•				
SCE-P2626SSWS	Plinth Base - Stainless Steel								•
SCE-KBH	Keyboard Housing	•	•	•	•	•	•		
SCE-WSCC	Control Compartment	•		•		•			
SCE-WSCCSS	Control Compartment - Stainless Steel		•		•		•		
SCE-KBS	Keyboard Shelf	•	•	•	•	•	•		

Qty. 1 Included

WORK STATION ACCESSORIES

PULLOUT SHELF

Catalog No.	Height (A)	Width (B)	Depth (C)	Used in Enclosure Depth	Product Code
SCE-20POS	2.00	19.50	20.00	24.25	C2
SCE-22POS	2.00	21.25	22.00	26.00	C2
SCE-26POS	2.00	19.50	28.00	32.25	C2

Pullout shelves are designed to allow easy access to the back of equipment. Extends 19" and mounts between the mounting channels provided inside the work station. Slides are included with shelf. Made of heavy gauge steel and powder coated white. Mounting hardware is included.



VENTED PULLOUT SHELF

Catalog No.	Height (A)	Width (B)	Depth (C)	Used in Enclosure Depth	Product Code
SCE-22VEPOS	2.00	21.25	22.00	26.00	C2

Vented pullout shelves are designed to allow easy access to the back of equipment and to allow air circulation inside the work station. Extends 19" and mounts between the mounting channels provided inside the work station. Slides are included with the shelf. Made of heavy gauge steel and powder coated white. Mounting hardware is included.



STATIONARY SHELF

Catalog No.	Height (A)	Width (B)	Depth (C)	Used in Enclosure Depth	Product Code
SCE-20STS	2.00	22.00	20.00	24.25	C2
SCE-22STS	2.00	23.75	22.00	26.00	C2
SCE-26STS	2.00	22.00	28.00	32.25	C2

Designed to support monitors, PC's, printers or any other equipment. Mounts between the mounting channels provided inside the work station. Made of heavy gauge steel and powder coated white. Mounting hardware is included.



VENTED STATIONARY SHELF

Catalog No.	Height (A)	Width (B)	Depth (C)	Used in Enclosure Depth	Product Code
SCE-20VESTS	2.00	22.00	20.00	24.25	C2
SCE-22VESTS	2.00	23.75	22.00	26.00	C2
SCE-26VESTS	2.00	22.00	28.00	32.25	C2

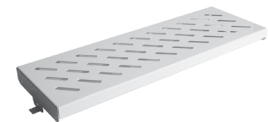
Designed to support monitors, PC's, printers or any other equipment while allowing air circulation inside the work station. Mounts between the mounting channels provided inside the work station. Made of heavy gauge steel and powder coated white. Mounting hardware is included.



MONITOR SHELF NON-VENTED & VENTED

Catalog No.	Description	Height (A)	Width (B)	Depth (C)	Product Code
SCE-8STS	Non-Vented	1.50	23.75	8.00	C2
SCE-8VESTS	Vented	1.50	23.75	8.00	C2

Designed to support the monitor or other components in the upper section of the work station. Vented shelf allows air circulation inside the work station. Made of heavy gauge steel and powder coated white. Mounting hardware is included.

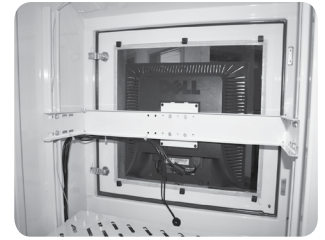


WORK STATION ACCESSORIES

MONITOR MOUNTING SYSTEM

Catalog No.	Product Code
SCE-STMMK	C2

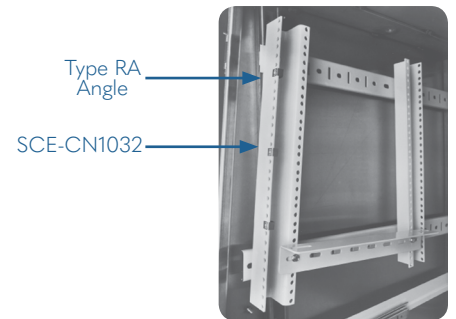
Designed for direct mounting of a flat screen monitor to the Work Station window door. Can be used with Standard Work Station or Slope Top Workstation. Made of steel and powder coated black texture. Mounting hardware is included.



RACK MOUNTING ANGLE (TYPE RA) - "U-SHAPE"

Catalog No.	Length	Mounting Location	Qty Per Kit	Product Code
SCE-60RA19WS	19.25	Top	2	C2
SCE-60RA24WS	28.00	Bottom	2	C2

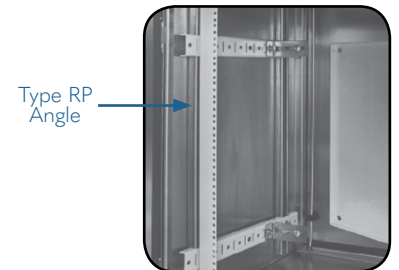
Designed for mounting 19" rack mount equipment. Order clip nut package (CN1032) to provide tapped holes. Made of heavy gauge steel and powder coated white. Mounting hardware is included.



RACK MOUNTING ANGLE (TYPE RP) - "L-SHAPE"

Catalog No.	Length	Mounting Location	Qty Per Kit	Product Code
SCE-60RP19WS	19.25	Top	2	C2
SCE-60RP24F6	26.25	Bottom	2	P2

Designed for mounting 19" rack mount equipment. Order clip nut package (SCE-CN1032) to provide tapped holes. Made of heavy gauge steel and powder coated white. Mounting hardware is included.



PENCIL EDGE/PALM REST

Catalog No.	Height (A)	Width (B)	Depth (C)	Product Code
SCE-STWSPL	0.56	26.00	2.00	C2
SCE-STWSPLSS	0.56	23.00	2.00	C2

Designed as a palm rest or retainer for the keyboard surface of the work station. Made of heavy gauge steel and powder coated white. "SS" part made of Type 304 stainless steel with #4 brushed finish. Mounting hardware is included.



WORK STATION ACCESSORIES

PANEL SUPPORT

Catalog No.	Height (A)	Width (B)	Depth (C)	Depth (D)	Qty Per Kit	Product Code
SCE-PSK24	2.00	0.50	21.00	24.25	4	C2
SCE-PSK32	2.00	0.50	29.00	32.25	4	C2

Panel supports can be installed horizontally to the left and right side of enclosure. Allows easy installation of optional panels or (RA) and (RP) type rack mounting angles to make them adjustable from front to back of the enclosure. Made of heavy gauge steel and powder coated white finish. Mounting hardware is included.



SIDE MOUNT PLATE

Catalog No.	Height (A)	Width (B)	Used in Enclosure Depth	Product Code
SCE-60P24WS	12.00	17.50	24.25	C2
SCE-60P32WS	12.00	25.50	32.25	C2

Designed to provide extra mounting space on the sides of the enclosure. Can be securely attached to the mounting channels. Mounting hardware is included. Made of heavy gauge steel and powder coated white.



CLAMPING NUTS

Catalog No.	Qty Per Kit	Product Code
SCE-CN1032	20	P2

Clamping nuts with a #10-32 retained nut will fit all rack mounting angles and rack mounting frames, to provide tapped holes. Nuts are zinc plated.



WORK STATION ACCESSORIES

INDIVIDUAL PANEL SUPPORTS

Catalog No.	Notes	Product Code
SCE-FSPS4	Set of 4	P2
SCE-FSPS6	Set of 6	P2
SCE-FSPS8	Set of 8	P2

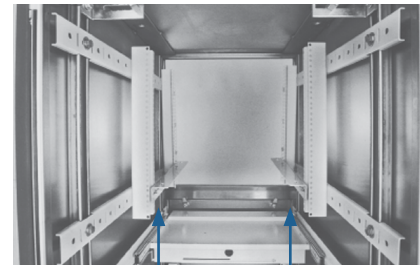
Individual Panel Supports are available for mounting sub-panels. Packaged in sets with all mounting hardware included. Made of heavy gauge steel and plated.



SUPPORT BRACKET

Catalog No.	Height (A)	Width (B)	Depth (C)	Qty Per Kit	Product Code
SCE-SB18	2.00	2.00	15.00	2	C2

Equipment support brackets help support rack mounted equipment during installation. The support mounts between two pair of type (RA) rack mounting angles. Slotted holes are provided to allow adjustment. Made of heavy gauge steel and powder coated white. Mounting hardware is included.



Brackets

CHANNEL NUTS

Catalog No.	Description	Qty Per Kit	Product Code
SCE-PS3816CN	3/8 - 16 Strut Nut	20	P2
SCE-PS1420CN	1/4 - 20 Strut Nut	20	P2

Designed to allow mounting of additional equipment to side channels. Zinc plated.



SCE-PS1420CN

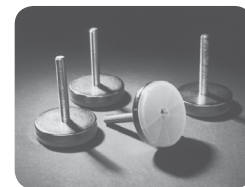


SCE-PS3816CN

LEVELING PADS

Catalog No.	Thread Size	Height	Qty Per Kit	Product Code
SCE-LPD2	3/8 - 16	2.00	4	P2

Designed to attach to the bottom of the enclosure in the existing threaded holes. Allows for adjustments for uneven floors. Pads are zinc plated with a plastic base. Mounting hardware is included.



WORK STATION ACCESSORIES

BLANK TOP DOOR

Catalog No.	Height (A)	Width (B)	Finish	Product Code
SCE-STWBTD	21.50	25.63	White	C2
SCE-STWSSBTD	21.50	25.63	Stainless Steel	C2
SCE-WSBTD	23.60	23.86	RAL 7035 Gray	C2
SCE-WSSBTD	26.59	23.88	Stainless Steel	C2

Designed to replace the top door when cutouts are desired. Pour in place oil and water resistant gasket. Installed by removing hinge pin. Black quarter turn latches. Made of heavy gauge steel and powder coated. "SS" door is made of Type 304 stainless steel with #4 brushed finish. Mounting hardware is included.



PEDESTAL

Catalog No.	Height (A)	Width (B)	Depth (C)	Finish	Product Code
SCE-PE22	21.38	8.00	8.00	RAL 7035 Gray	C2
SCE-PE22SS	21.38	8.00	8.00	Stainless Steel	C2

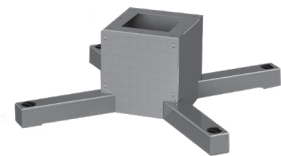
Designed to allow desktop work stations to be floor mounted. Gasket and hardware provided to attach to work station. Made of heavy gauge steel and powder coated RAL 7035 gray. "SS" pedestal is made of Type 304 stainless steel.



PEDESTAL BASE

Catalog No.	Height (A)	Width (B)	Depth (C)	Finish	Product Code
SCE-24PEBASE	10.00	24.00	24.00	RAL 7035 Gray	C2
SCE-24PEBASESS	10.00	24.00	24.00	Stainless Steel	C2

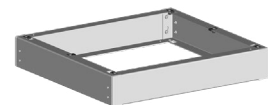
Designed to mount pedestal to the floor. Made of heavy gauge steel and powder coated RAL 7035 gray. "SS" base is made of Type 304 stainless steel. Mounting hardware is included.



WORK STATION PLINTH BASE

Catalog No.	Height (A)	Width (B)	Depth (C)	Product Code
SCE-P2424WS	4.00	24.25	24.25	P2
SCE-P2432WS	4.00	32.25	24.25	P2
SCE-P2626WS	4.00	26.00	26.00	P2
Stainless Steel				
SCE-P2424SSWS	4.00	24.25	24.25	P2
SCE-P2432SSWS	4.00	32.25	24.25	P2
SCE-P2626SSWS	4.00	26.00	26.00	P2

Designed to install under an enclosure to provide space for cables to enter from below and raise the enclosure up off the floor. Plinth bases are stackable to acquire desired height off the floor. Made of heavy gauge steel and finished with black textured powder coat. "SS" parts are made of type 304 stainless steel with #4 brushed finish.

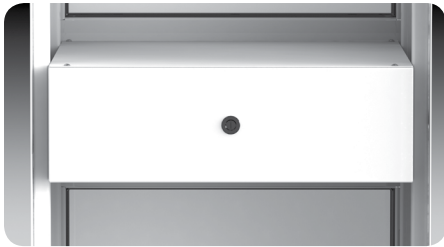


WORK STATION ACCESSORIES

KEYBOARD HOUSING

Catalog No.	Height (A)	Width (B)	Depth (C)	Product Code
SCE-KBH	7.00	21.90	22.38	C2

Provides protection from dust, dirt, oil and water for interior components when keyboard drawer is open. Mounts to mounting channels. Keyboard shelf with slides is mounted inside the housing. Hole grommet in rear provided for cords. Powder coated white. Mounting hardware is included.



CONTROL COMPARTMENT

Catalog No.	Height (A)	Width (B)	Depth (C)	Finish	Product Code
SCE-WSCC	8.00	24.25	14.50	RAL 7035 Gray	C2
SCE-WSCCSS	8.00	24.25	14.50	Stainless Steel	C2

Designed to be mounted to the front of the work station when installation of pushbuttons or control panels is desired. Installed after removing the pullout keyboard drawer and door. Can be installed with the flat or sloped surface facing up. 20 degree slope on sloped surface. Gasket and mounting hardware included. Made of heavy gauge steel and powder coated RAL 7035 gray. "SS" part is made of Type 304 stainless steel with #4 brushed finish.



PULLOUT KEYBOARD DRAWER

Catalog No.	Height (A)	Width (B)	Depth (C)	Used in Enclosure Depth	Product Code
SCE-KBS	3.00	20.00	14.00	24.25	P2
SCE-KBS32	3.00	20.00	14.00	32.25	P2

Designed to hold a keyboard and mouse on a separate pullout shelf. Mounts between mounting channels. Made of heavy gauge steel with a white powder coat finish. A mouse pad is included. Drawer is included with work station. Mounting hardware is included.

