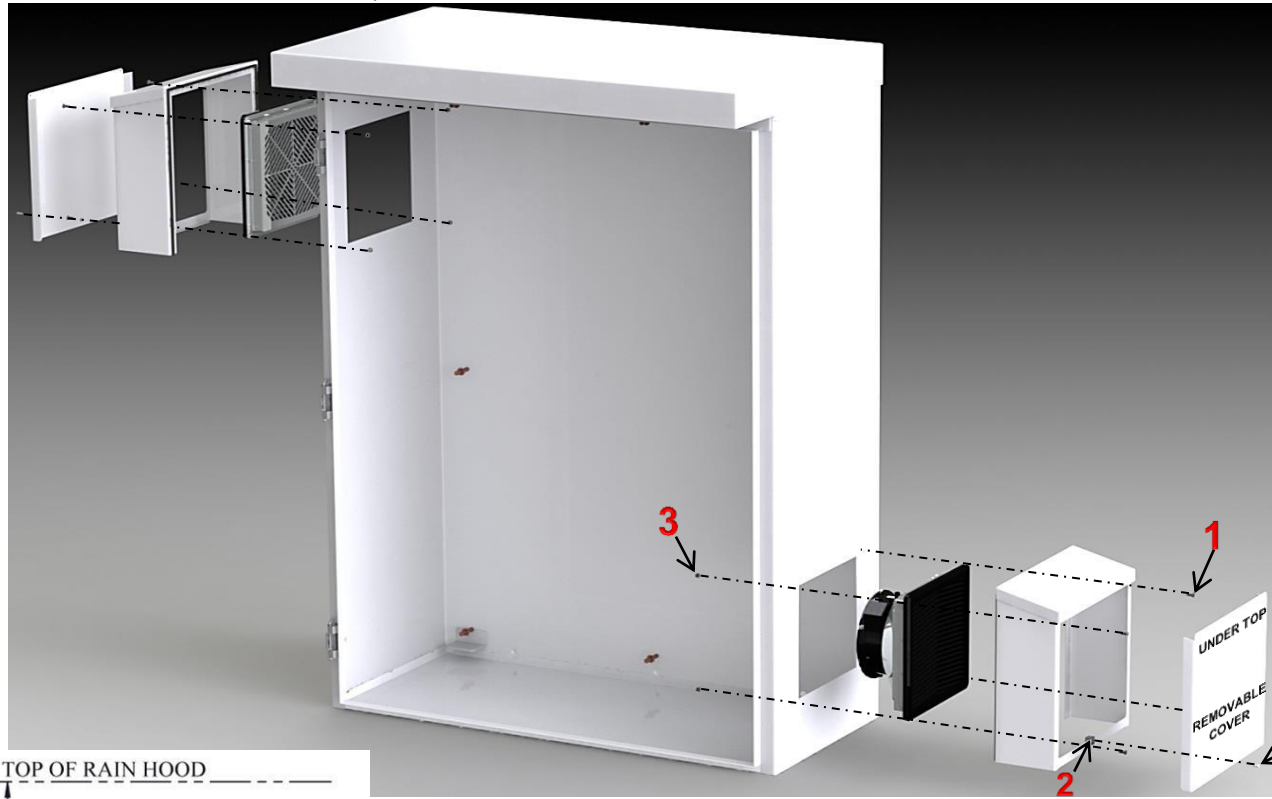


TYPE 3R RAIN HOOD WITH REMOVEABLE COVER

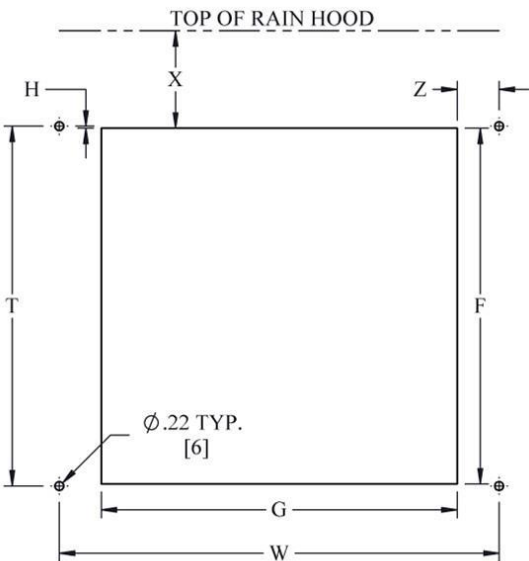
FOR USE WITH TYPE 3, 3R, 3S ENCLOSURES. TO PROTECT DEVICES AND VENTILATION AGAINST WIND BLOWN RAIN, SLEET, SNOW, AND DROPPING WATER, ICE, OR FLUIDS FROM ENTERING INTO THE ENCLOSURE.



TYPE 3, 3R, 3S
IEC 60529 IP65



FASTENERS MUST BE TIGHTENED TO A MINIMUM OF 8 INCH POUNDS TO INSURE PROPER SEAL.



BOLT PACK #119557	
1	10-32 x 1/2" PAN HEAD PHILLIPS SCREW
2	10-32 G-STYLE CLIP NUT
3	10-32 KEPS NUT
4	10-32 x 3/8" BUTTON HEAD TORX



DO NOT SEAM GASKET CORNERS

*** AVAILABLE FINISH:**
-BLACK
-RAL 7035 GRAY

START APPLYING GASKET HERE IN ONE CONTINUOUS STRIP BENDING AROUND CORNERS

MAINTAINS ENVIROMENTAL RATINGS WHEN INSTALLED WITH LISTED FANS OR FILTER KITS

RAIN HOOD PART NUMBER	COINCIDING FAN & FILTER	F	G	H	T	W	X	Z
SCE-RH4N12 SCE-RH4N12SS	SCE-N12FA44* SCE-N12FGA44* SCE-N3RFA44* SCE-N3RFGA44*	5.03 [128]	5.03 [128]	0.02 [1]	5.00 [127]	7.00 [178]	2.44 [62]	0.99 [25]
SCE-RH6N12 SCE-RH6N12SS	SCE-N12FA66* SCE-N12FGA66* SCE-N3RFA66* SCE-N3RFGA66*	8.91 [226]	8.91 [226]	0.05 [1]	9.00 [229]	11.00 [279]	2.44 [62]	1.05 [27]
SCE-RH10N12 SCE-RH10N12SS	SCE-N12FA1010* SCE-N12FGA1010* SCE-N3RFA1010* SCE-N3RFGA1010*	11.57 [294]	11.57 [294]	0.22 [6]	12.00 [305]	14.00 [356]	2.46 [63]	1.22 [31]