

# PROTECTIVE ACCESS ENCLOSURES

## HINGED WINDOW ENCLOSURE

Designed to mount on the exterior of an enclosure to provide protection for controls with easy access. ELJ hinges. Black mini quarter turn latches. UV stable Polycarbonate viewing window. Gasket and hardware included. Made of heavy gauge carbon steel and powder coated. "SS" parts made of heavy gauge stainless steel Type 304 with #4 brushed finish.

Recommend use as Type 3R rating in full outdoor exposure and extreme weather environments – the addition of ventilation is necessary to handle the large negative pressure differential caused in a tightly sealed enclosure in extreme weather conditions. Temperatures that may exceed 140°F, such as outdoor in direct sunlight should be evaluated, shading or sun shield may be necessary.

For more details see Design Considerations When Specifying Your Enclosure on our website.

**IS3 - Industry Standards -**  
NEMA Type 3R, 12 & Type 13  
UL Listed Type 3R & 12  
CSA Type 3R & 12  
IEC 60529 IP55

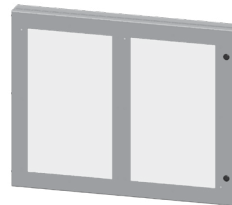
**IS4 - Industry Standards -**  
NEMA Type 3R, 4, 12 & Type 13  
UL Listed Type 3R, 4 & 12  
CSA Type 3R, 4 & 12  
IEC 60529 IP66

**IS6 - Industry Standards -**  
NEMA Type 3R, 4, 4X, 12 & Type 13  
UL Listed Type 3R, 4, 4X & 12  
CSA Type 3R, 4, 4X & 12  
IEC 60529 IP66

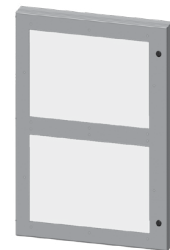
Catalog No.	Height (A)	Width (B)	Depth (C)	Number Windows	Viewing Area Height x Width	Industry Standard	Product Code
<a href="#">SCE-HWK1212</a>	12.00	12.00	1.50	1	8.00 x 7.38	IS4	P6
<a href="#">SCE-HWK1312</a>	13.00	12.00	1.50	1	8.00 x 7.38	IS4	P6
<a href="#">SCE-HWK1814</a>	18.00	14.00	1.50	1	14.00 x 9.38	IS4	P6
<a href="#">SCE-HWK2218</a>	22.00	18.00	1.50	1	18.00 x 13.38	IS3	P6
<a href="#">SCE-HWK2228</a>	22.00	28.00	1.50	2	18.00 x 17.38	IS3	P6
<a href="#">SCE-HWK2822</a>	28.00	22.00	1.50	2	10.88 x 17.38	IS3	P6
<a href="#">SCE-HWK1212LG</a>	12.00	12.00	1.50	1	8.00 x 7.38	IS4	P6
<a href="#">SCE-HWK1814LG</a>	18.00	14.00	1.50	1	14.00 x 9.38	IS4	P6
<a href="#">SCE-HWK2218LG</a>	22.00	18.00	1.50	1	18.00 x 13.38	IS3	P6
<a href="#">SCE-HWK2228LG</a>	22.00	28.00	1.50	2	18.00 x 10.56	IS3	P6
<a href="#">SCE-HWK2822LG</a>	28.00	22.00	1.50	2	10.88 x 17.38	IS3	P6
<b>Stainless Steel</b>							
<a href="#">SCE-HWK1212SS</a>	12.00	12.00	1.50	1	8.00 x 7.38	IS6	P6
<a href="#">SCE-HWK1814SS</a>	18.00	14.00	1.50	1	14.00 x 9.38	IS6	P6
<a href="#">SCE-HWK2218SS</a>	22.00	18.00	1.50	1	18.00 x 13.38	IS3	P6
<a href="#">SCE-HWK2228SS</a>	22.00	28.00	1.50	2	18.00 x 10.56	IS3	P6
<a href="#">SCE-HWK2822SS</a>	28.00	22.00	1.50	2	10.88 x 17.38	IS3	P6



SCE-HWK1212(SS)  
SCE-HWK1814(SS)  
SCE-HWK2218(SS)



SCE-HWK2228(SS)



SCE-HWK2822(SS)

Catalog No.	Height (A)	Width (B)	Depth (C)	Finish	Industry Standard	Product Code
<a href="#">SCE-HA1010</a>	10.00	10.00	1.50	ANSI-61 Gray	IS4	P6
<a href="#">SCE-HA1212</a>	12.00	12.00	1.50	ANSI-61 Gray	IS4	P6
<a href="#">SCE-HA1814</a>	18.00	14.00	1.50	ANSI-61 Gray	IS4	P6
<a href="#">SCE-HA1010-05</a>	10.00	10.00	1.50	SCE-05 White	IS4	P6
<a href="#">SCE-HA1212-05</a>	12.00	12.00	1.50	SCE-05 White	IS4	P6
<a href="#">SCE-HA1010LG</a>	10.00	10.00	1.50	RAL 7035 Gray	IS4	P6
<a href="#">SCE-HA1212LG</a>	12.00	12.00	1.50	RAL 7035 Gray	IS4	P6
<a href="#">SCE-HA1814LG</a>	18.00	14.00	1.50	RAL 7035 Gray	IS4	P6
<b>Stainless Steel</b>						
<a href="#">SCE-HA1010SS</a>	10.00	10.00	1.50	#4 Brushed Finish	IS6	P6
<a href="#">SCE-HA1212SS</a>	12.00	12.00	1.50	#4 Brushed Finish	IS6	P6
<a href="#">SCE-HA1814SS</a>	18.00	14.00	1.50	#4 Brushed Finish	IS6	P6

## HINGED ACCESS ENCLOSURE

Designed to house electrical controls, instruments and components used in an indoor or outdoor environment to provide a degree of protection for the equipment inside the enclosure against ingress of solid foreign objects (falling dirt); and provide a degree of protection with respect to the harmful effects on the equipment due to the ingress of water (rain, sleet, snow). ELJ hinges. Black mini quarter turn latches. Gasket and hardware included.

**IS4 - Industry Standards -**  
NEMA Type 3R, 4, 12 & Type 13  
UL Listed Type 3R, 4 & 12  
CSA Type 3R, 4 & 12  
IEC 60529 IP66

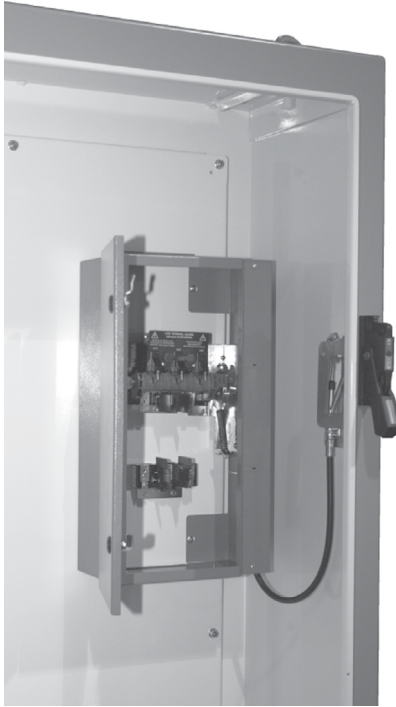
**IS6 - Industry Standards -**  
NEMA Type 3R, 4, 4X, 12 & Type 13  
UL Listed Type 3R, 4, 4X & 12  
CSA Type 3R, 4, 4X & 12  
IEC 60529 IP66



# PROTECTIVE ACCESS ENCLOSURES

## TYPE I INTERNAL DISCONNECT ENCLOSURE

Catalog No.	Height	Width	Depth	Min Depth of Enclosure	Product Code
<a href="#">SCE-60AFSD</a>	13.50	12.00	6.50	12 inches	P2
<a href="#">SCE-100AFSD</a>	22.00	12.00	6.50	12 inches	P2
<a href="#">SCE-400AFSD</a>	32.00	15.00	9.75	16 inches	P2



### Application

Designed for use with enclosures that require additional protection against Arc Flash. This enclosure can be used within an environmentally rated enclosure to isolate the main power supply. Increasing personal protection by preventing incidental contact or exposure to the high voltage arc flash and shock hazard, and potentially reducing the PPE level for the lower risk components when the Internal Disconnect Enclosure cover is closed. The Internal Disconnect Enclosure can be easily incorporated into a new system or added to a pre-existing system on variable depth or cable operated disconnects. Aids in achieving compliance with NFPA 70E by concealing main power supply. For installation information, consult our Installation Manual at [www.saginawcontrol.com](http://www.saginawcontrol.com).

### Construction

- 0.060" carbon steel
- Enclosures are symmetrical for use with left or right hand disconnects.
- Removable continuous hinges.
- 110 degree door stop prevents incidental contact with other components.
- Black quarter turn latch.
- Black spring loaded quarter turn latch with 7mm square insert and key.
- Latches automatically when door is closed.
- Gland plate top and bottom provides easy installation of wires.
- Mounting holes provided in back for securing to the sub-panel.
- Ground stud on door and body.

### Note

The proper size of the Internal Disconnect enclosure is a limited only space, occupied by the disconnect or circuit breaker. Minimum spacing requirements are provided by the disconnect manufacture and wiring code requirements.

### Finish

Orange Texture powder coated inside and out.

**\*For use with Saginaw Control enclosures only**

### IS8 Industry Standards

- NEMA Type 1
- UL Listed Type 1
- CSA Type 1
- IEC 60529 IP30

# PROTECTIVE ACCESS ENCLOSURES

## EXTERNAL DISCONNECT ENCLOSURE

**Application**  
 Designed for use with enclosures that require additional protection against Arc Flash. This enclosure can be used with an environmentally rated enclosure to isolate the main power supply. Increasing personal protection by preventing incidental contact or exposure to the high voltage arc flash and shock hazard, and potentially reducing the PPE level for the lower risk components of the main enclosure. The External Disconnect Enclosure bolts to the exterior right side of a single or multi door primary enclosure. Aids in achieving compliance with NFPA 70E by concealing main power supply. For Installation Information, consult our Installation Manual at [www.saginawcontrol.com](http://www.saginawcontrol.com).

**Construction**

- 0.075" carbon steel/type 304 stainless steel.
- Seams continuously welded and ground smooth.
- Flange trough collar around all sides of door opening.
- Pour in place oil and water resistant gasket.
- Black quarter turn latch.
- Collar studs provided for mounting panels.
- 31"H x 12"W galvanized sub-panel installed.
- Concealed hinges.
- Latches are opened or closed with a screwdriver.
- Mounting hardware included.
- Mechanical interlock and mounting hardware included.

**Finish**  
 ANSI-61 gray powder coated inside and out.  
 SS:#4 brushed finish on all exterior surfaces.

### IS4 Industry Standards

NEMA Type 3R, 12 & Type 13  
 UL Listed Type 3R, 4 & 12  
 CSA Type 3R, 4 & 12  
 IEC 60529 IP66

### IS6 Industry Standards

NEMA Type 3R, 4, 4X 12 & Type 13  
 UL Listed Type 3R, 4, 4X & 12  
 CSA Type 3R, 4, 4X & 12  
 IEC 60529 IP66

Catalog No.	Height	Width	Depth	Industry Standard	Product Code
<a href="#">SCE-EXD18</a>	34.50	15.00	18.00	IS4	P2
<a href="#">SCE-EXD18SS</a>	34.50	15.00	18.00	IS6	P2
<a href="#">SCE-EXD12</a>	34.50	15.00	12.00	IS4	P2

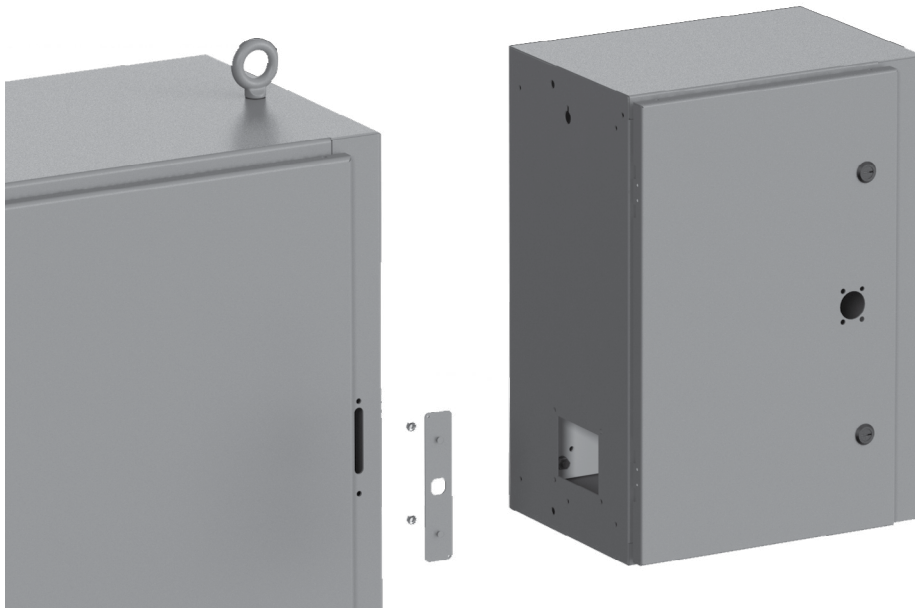
For use with flange mount disconnect enclosures. Ref. SCE-84XM4018 or similar.



# PROTECTIVE ACCESS ENCLOSURES

## EXTERNAL DISCONNECT ENCLOSURE ROTARY

Catalog No.	Height	Width	Depth	Industry Standard	Product Code
<a href="#">SCE-EXR12-30T200</a>	24.00	17.00	12.00	IS4	P2
<a href="#">SCE-EXR18-400</a>	48.00	18.00	IS4	P2	



Note: Main door is mechanically interlocked to the External Disconnect such that the main enclosure door must be closed and door handle engaged in order to turn disconnect on.

Once the main enclosure is closed and disconnect is turned on, the main enclosure is automatically locked when disconnect is turned on, and unlocked when disconnect is turned off.

A defaeter mechanism on the flange of the main enclosure allows entry with power on by deliberate means.

### Application

Designed for use with enclosures that require additional protection against Arc Flash. This enclosure can be used with an environmentally rated enclosure to isolate the main power supply. It increases personal protection by preventing incidental contact or exposure to the high voltage arc flash and shock hazard, and potentially reduces the PPE level for the lower risk components of the main enclosure. This External Disconnect Enclosure is designed specifically to accommodate the Rotary Compact Fusible disconnect Allen-Bradley 194R, Square D GS2, Eaton/Bussmann R9, Siemens CFS and Scocomec Fuserbloc Models. Aids in achieving compliance with NFPA 70E by concealing main power supply. For more information consult our Installation Manual at [www.saginawcontrol.com](http://www.saginawcontrol.com)

### Construction

- 0.075 In. steel
- Seams continuously welded and ground smooth.
- Flange trough collar around all sides of door opening.
- Pour in place oil & water resistant gasket
- Collar studs provided for mounting panels.
- Galvanized Subpanel installed.
- Concealed hinges.
- Black quarter turn latches.
- Latches are opened or closed with a screwdriver.
- Mounting hardware included.
- Cable Operated Mechanical interlock and hardware included.
- Provisions for Rotary Compact Fusible disconnect
- For use with flange mount disconnect enclosures

### IS4 Industry Standards

NEMA Type 3R, 12 & Type 13  
 UL Listed Type 3R, 4 & 12  
 CSA Type 3R, 4 & 12  
 IEC 60529 IP66



# PROTECTIVE ACCESS ENCLOSURES

## KEYLOCK BOX

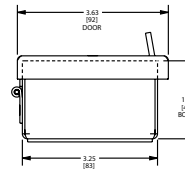
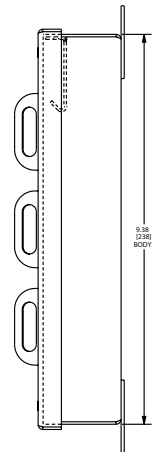
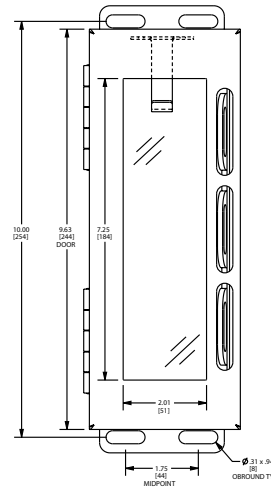
Catalog No.	Height (A)	Width (B)	Depth (C)	Product Code
-------------	------------	-----------	-----------	--------------

[SCE-KLB](#) 9.38 3.25 1.88 P2

The keylock box is used to hold and secure a common key for a given set of equipment in the plant. This key is secured in the keylock box allowing up to 6 locks for security to access.

Large viewing window in the cover provides clear visibility of the key inside.

Large key tag with key ring included with the keylock box.



## ORANGE CAUTION LABELS

Safety Orange vinyl Caution Label with Warning Symbols designed for use on interior door for high visibility and warning of potential hazard. Made of high quality durable vinyl, water and oil resistant, with adhesive back for quick easy installation. The vivid safety orange and yellow with the standard Hazard Safety Symbols make them extremely effective in any application.

Catalog No.	Height	Width	Qty. Per Package	Product Code
<a href="#">SCE-OCL12</a>	12.00	12.00	5	P2
<a href="#">SCE-OCL24</a>	24.00	24.00	5	P2

