

22.5MM PUSHBUTTON ENCLOSURES

Application

Designed to offer protection for oil-tight pushbuttons, switches, and pilot lights from dust, water, dirt and oil. For installation information, consult our Installation Manual at www.saginawcontrol.com.

Construction

- 0.063" carbon steel.
- Continuously welded seams.
- Captivated cover screws thread into sealed wells.
- 4-way pushbutton holes accept all brands of oil-tight pushbuttons, switches and pilot lights. Hole diameter is 0.87" (22.5 mm).
- Immediate removal of cover is permitted.
- Pour in place oil and water resistant gasket.
- Welded mounting provision top and bottom of back.

Finish

ANSI-61 gray powder coated inside and out.

IS2 Industry Standards

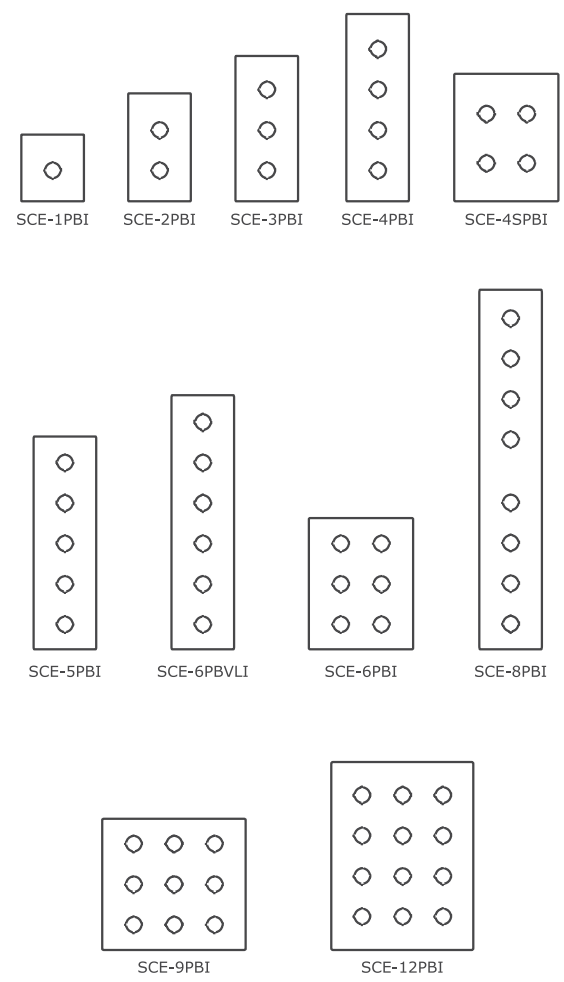
- NEMA Type 4, 12 & Type 13
- UL Listed Type 4 & 12
- CSA Type 4 & 12
- IEC 60529 IP66



58

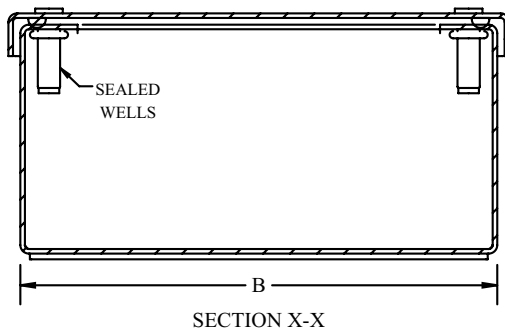
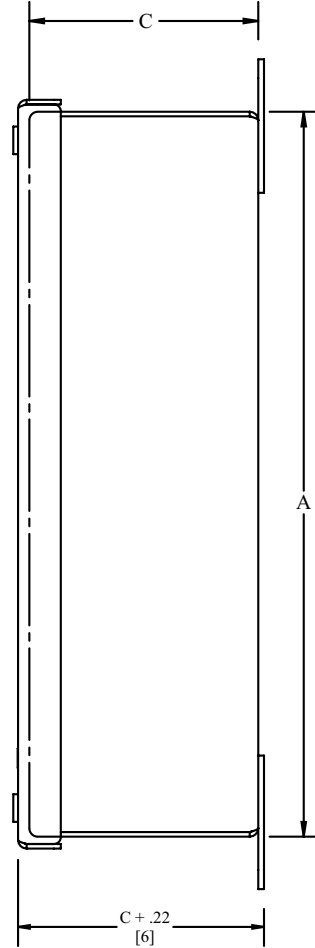
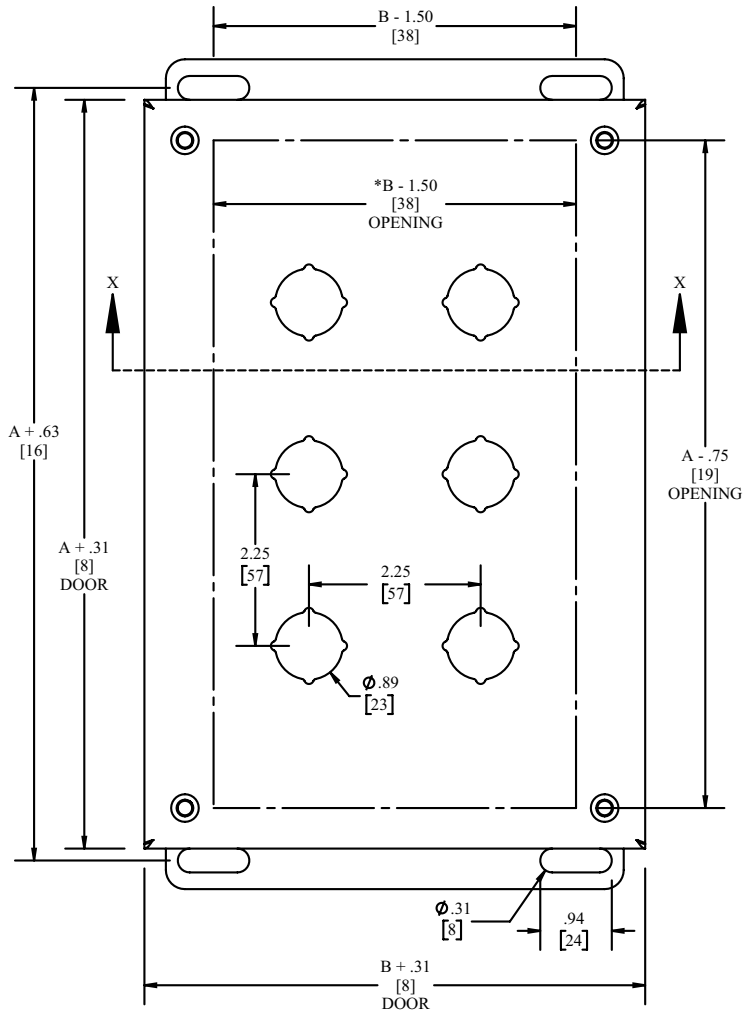
Enclosure Product Code A1

Catalog No.	Height (A)	Width (B)	Depth (C)	Industry Standard
SCE-1PBI	3.50	3.25	2.75	IS2
SCE-2PBI	5.75	3.25	2.75	IS2
SCE-3PBI	8.00	3.25	2.75	IS2
SCE-4PBI	10.25	3.25	2.75	IS2
SCE-4SPBI	7.25	6.25	3.00	IS2
SCE-5PBI	12.50	3.25	2.75	IS2
SCE-6PBI	9.50	6.25	3.00	IS2
SCE-6PBVLI	14.75	3.25	2.75	IS2
SCE-8PBI	20.25	3.25	2.75	IS2
SCE-9PBI	9.50	8.50	3.00	IS2
SCE-12PBI	11.75	8.50	3.00	IS2



22.5MM PUSHBUTTON ENCLOSURES

TECHNICAL DATA



NOTE:
*B - .50 [13] WHEN ONE COLUMN OF PUSHBUTTONS