

Features

- Suitable for Zone 2&22
- ATEX & IECEx certifications
- Manifold combines the solenoid valve for purging and needle valve for pressurization in one housing
- Suitable for steel or plastic tubing
- Mounting hardware, pneumatic fittings and tubing included

Application

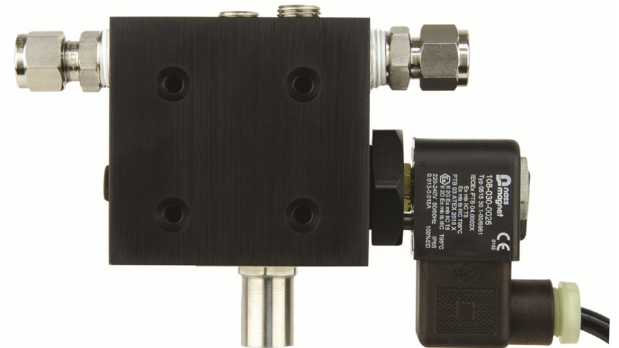
The 5500-MAN-EX01-* combines a solenoid valve for purging and a needle valve for pressurization in one manifold design. When the valve is energized, the solenoid valve is open and allows for a high flow rate of protective gas into the enclosure. When the valve is de-energized, the flow through the internal needle valve is adjustable by a flathead screw driver through the needle stem on the manifold. The solenoid valve is used for purging, leakage compensation, and temperature control by signals from user defined points on the 5500 control unit.

Mounting hardware includes 3/8" tube compression fittings mounted on the manifold for input and output flow, 3/8" tube compression bulkhead fitting for getting flow into the enclosure and certified sealing washers with bolts to mount the manifold to the enclosure. Also included is 1 meter of 3/8" poly tubing with 3/8" poly tube stiffener inserts which allows the connection of plastic tubing to compression fittings without collapsing the tubing.

The 5500-MAN-EX-01-* is certified for Zone applications. For NEC, Class/Division applications see the model number key for proper manifold selection.

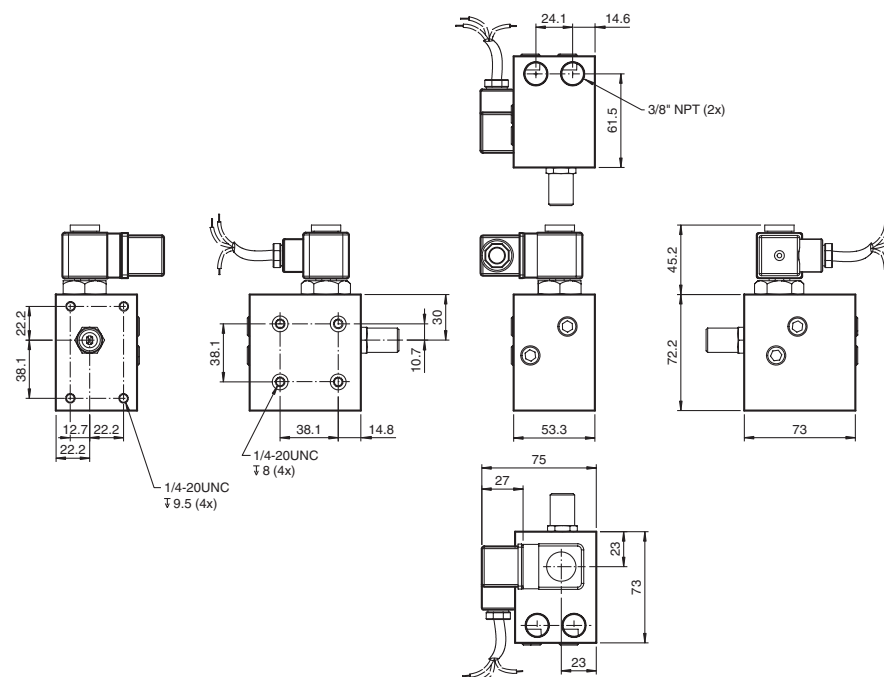
The 5500 valve system works with the 5500 control unit and EPV-5500 vents.

The 5500 system has ATEX and IECEx certification for Zone 2&22 installation.



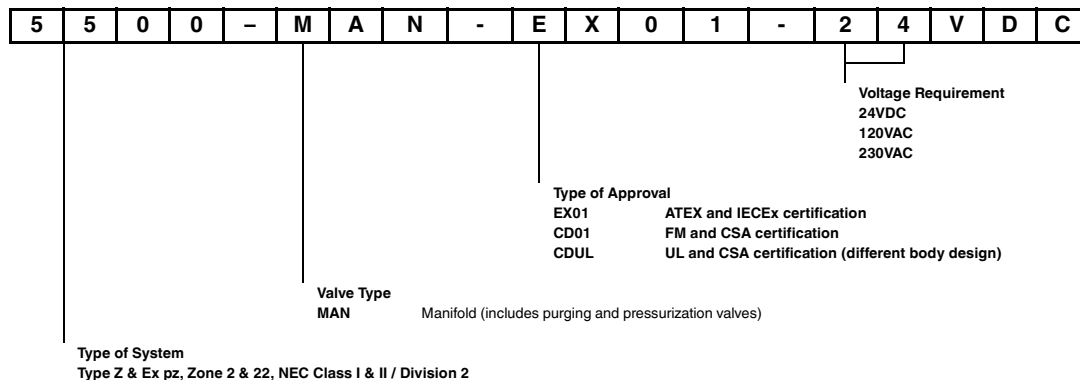
BEBCO EPS®

Dimensions



General specifications	
Operating mode	automatic purging
Series	5500
Hazardous environment	gas or dust
Electrical specifications	
Fuse rating	DC: 500 mA AC: 80 mA (fuse rating on 5500 control unit)
Pneumatic parameters	
Protective gas supply	instrument grade air or inert gas
Pressure requirement	1.7 bar (25 psi) to 8.0 bar (115 psi)
Purge flow rate	solenoid valve : Cv (flow coefficient) = 1.4 needle valve : Cv (flow coefficient) = 0.25
Ambient conditions	
Ambient temperature	-20 ... 50 °C (-4 ... 122 °F) T5
Mechanical specifications	
Connection type	Pneumatic Input port: 3/8" Tube compression fitting Output port: 3/8" Tube compression fitting
Degree of protection	type 7 & 9
Material	Housing: anodized aluminum 3/8" compression fittings: 316 stainless steel Pressure ports: 3/8" NPTF Bulkhead fitting: 316 stainless steel Mounting bolts: 1/4 - 20, 316 stainless steel Sealing washers: UL recognized type 4X
Cable	3 m
Mass	1250 g (2.8 lb)
Dimensions	see dimensions
Data for application in connection with Ex-areas	
EC-Type Examination Certificate	
Group, category, type of protection, temperature class	⊕ II 2 G Ex mb IIC T5 Gb ⊕ II 2 D Ex mb tb IIIC T95C Db IP65 Protection by encapsulation PTB 03 ATEX 2018 X
International approvals	
IECEX approval	⊕ II 2 G Ex mb IIC T5 Gb ⊕ II 2 D Ex mb tb IIIC T95C Db IP65 Protection by encapsulation IECEX PTB 04.0002X

Type code/model number



Release date 2015-07-09 15:43 Date of issue 2015-07-09 1169982_eng.xml

Refer to "General Notes Relating to Pepperl+Fuchs Product Information".

Pepperl+Fuchs Group
www.pepperl-fuchs.com

USA: +1 330 486 0002
pa-info@us.pepperl-fuchs.com

Germany: +49 621 776 2222
pa-info@de.pepperl-fuchs.com

Singapore: +65 6779 9091
pa-info@sg.pepperl-fuchs.com