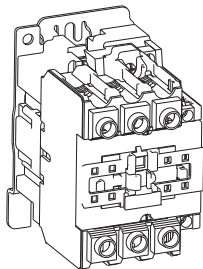


Ex9CDS40/50/65/80/95 General Purpose Contactor



Z9CDS2201208NA

1/8



WARNING

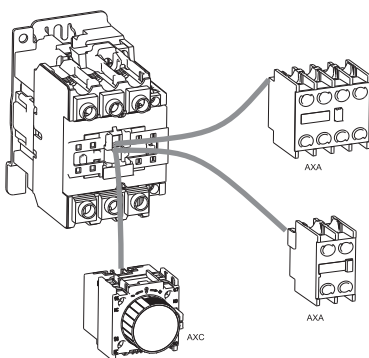
DO NOT ATTEMPT TO INSTALL OR PERFORM MAINTENANCE ON EQUIPMENT WHILE IT IS ENERGIZED. DEATH, SEVERE PERSONAL INJURY, OR SUBSTANTIAL PROPERTY DAMAGE CAN RESULT FROM CONTACT WITH ENERGIZED EQUIPMENT. ALWAYS VERIFY THAT NO VOLTAGE IS PRESENT BEFORE PROCEEDING WITH THE TASK, AND ALWAYS FOLLOW GENERALLY ACCEPTED SAFETY PROCEDURES.

NOARK IS NOT LIABLE FOR THE MISAPPLICATION OR MISSAPPLICATION OF IT'S PRODUCTS.

2/8

Code	Model	A	B	C		D		E		F		G		H	
				mm ² [AWG]	mm ² [AWG]	mm ² [AWG]	mm ² [AWG]	mm ² [AWG]	mm ² [AWG]	mm ² [AWG]	mm ² [AWG]	mm ² [AWG]	mm ² [AWG]	mm ² [AWG]	mm ² [AWG]
				1~2,5[16~14]	1~2,5[16~14]	1~4[16~12]	1~2,5[16~14]	1~4[16~12]	1~2,5[16~14]	1~4[16~12]	1~4[16~12]	1~4[16~12]	1~4[16~12]	1~4[16~12]	1~4[16~12]
Ex9CDS40	M8	3.5N-m[45Lb.in]	6~25[10~4]	4~10[12~8]	6~25[10~4]	4~10[12~8]	6~25[10~4]	4~10[12~8]	6~25[10~4]	4~10[12~8]	6~25[10~4]	4~10[12~8]	6~25[10~4]	4~10[12~8]	4~10[12~8]
Ex9CDS50	M8	3.5N-m[45Lb.in]	6~25[10~4]	4~10[12~8]	6~25[10~4]	4~10[12~8]	6~25[10~4]	4~10[12~8]	6~25[10~4]	4~10[12~8]	6~25[10~4]	4~10[12~8]	6~25[10~4]	4~10[12~8]	4~10[12~8]
Ex9CDS65	M8	3.5N-m[45Lb.in]	6~25[10~4]	4~10[12~8]	6~25[10~4]	4~10[12~8]	6~25[10~4]	4~10[12~8]	6~25[10~4]	4~10[12~8]	6~25[10~4]	4~10[12~8]	6~25[10~4]	4~10[12~8]	4~10[12~8]
Ex9CDS80	M10	4N-m[89Lb.in]	10~35[8~2]	6~16[10~6]	10~35[8~2]	6~16[10~6]	10~35[8~2]	6~16[10~6]	10~35[8~2]	6~16[10~6]	10~35[8~2]	6~16[10~6]	10~35[8~2]	6~16[10~6]	6~16[10~6]
Ex9CDS95	M10	4N-m[89Lb.in]	10~35[8~2]	6~16[10~6]	10~35[8~2]	6~16[10~6]	10~35[8~2]	6~16[10~6]	10~35[8~2]	6~16[10~6]	10~35[8~2]	6~16[10~6]	10~35[8~2]	6~16[10~6]	6~16[10~6]

3/8



4/8

Warning!

Motor may start automatically. Automatic start may injure persons and damage machines. Automatic restart is possible when "automatic reset" is active.

Avertissement !

Le redémarrage automatique du moteur peut provoquer des dégâts matériels et être dangereux pour personnes. Ce danger du redémarrage automatique correspond au mode «réarmement automatique».

¡Advertencia!

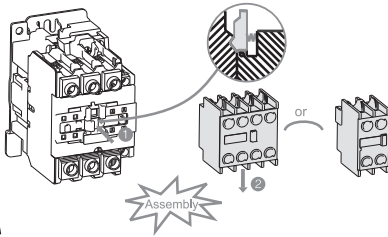
El motor puede arrancar automáticamente. El arranque automático es posible cuando el "botón de reset" está en posición automático y el circuito de maniobra activado.



Dangerous Electrical Current!
Only skilled qualified persons may carry out the following operations.

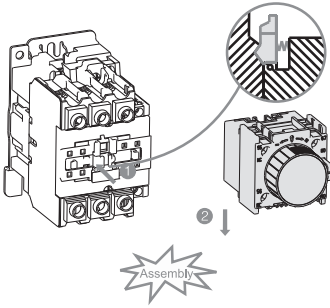
Tension électrique dangereuse!
Seules les personnes qualifiées et averties doivent exécuter les travaux ci-après.

¡Corriente eléctrica! ¡Peligro de muerte!
El trabajo a continuación descrito debe ser realizado por personas cualificadas y advertidas.

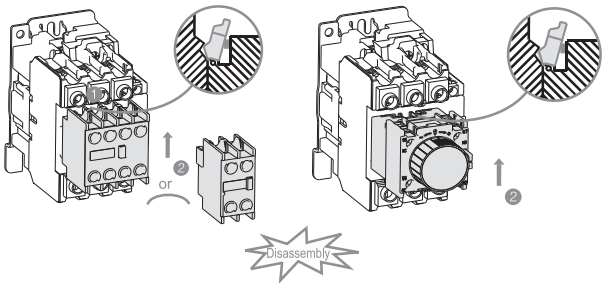


Z9CDS2201208NA

5/8



6/8

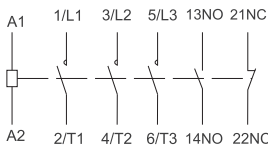


7/8

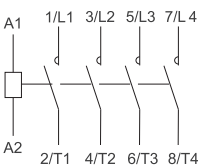


Disconnect all power before working on equipment.
Coupez toutes les alimentations avant de travailler sur l'équipement.
Desconecte la alimentación antes de trabajar en equipo.

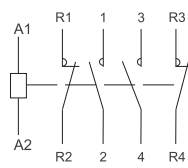
4011~9511



4040~9540



4022~9522



8/8

NOARK



Printed with environment-friendly paper

Copyright Noark. All Rights Reserved

www.noark-electric.com

08/2012