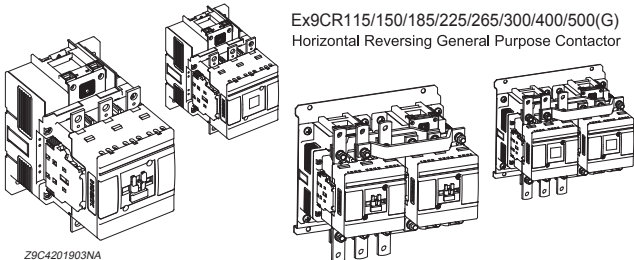


Ex9C115/150/185/225/265/300/400/500/630/800/1000(G)
General Purpose Contactor

Ex9CR115/150/185/225/265/300/400/500(G)
Horizontal Reversing General Purpose Contactor



Z9C4201903NA



WARNING

DO NOT ATTEMPT TO INSTALL OR PERFORM MAINTENANCE ON EQUIPMENT WHILE IT IS ENERGIZED. DEATH, SEVERE PERSONAL INJURY, OR SUBSTANTIAL PROPERTY DAMAGE CAN RESULT FROM CONTACT WITH ENERGIZED EQUIPMENT. ALWAYS VERIFY THAT NO VOLTAGE IS PRESENT BEFORE PROCEEDING WITH THE TASK, AND ALWAYS FOLLOW GENERALLY ACCEPTED SAFETY PROCEDURES.

NOARK IS NOT LIABLE FOR THE MISAPPLICATION OR MISSAPPLICATION OF IT'S PRODUCTS.

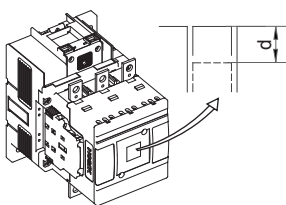


Printed with environment-friendly paper
 Copyright Noark. All Rights Reserved
 www.noark-electric.com

Model	Ex9C115(G)	Ex9C150(G)	Ex9C185(G)	Ex9C225(G)	Ex9C265(G)	Ex9C300(G)	Ex9C400/500(G)
L1,L2,L3 T1,T2,T3	159Lb.in 18 N·m	17mm/0.67"	0.12" 3mm	310Lb.in 35 N·m	25mm/0.98"	0.24" 6mm	
Suggest Size of Bus Bar	0.75"×0.125"×1 20mm×3mm×1	0.625"×0.125"×2 15mm×3mm×2	0.75"×0.125"×2 20mm×3mm×2	1"×0.125"×2 25mm×3mm×2	0.75"×0.25"×2 20mm×5mm×2	0.75"×0.25"×2 25mm×5mm×2	1"×0.25"×2 30mm×5mm×2

Model	Ex9C630G		Ex9C800G	Ex9C1000G	
L1,L2,L3 T1,T2,T3	398Lb.in 45 N·m	40mm/1.58"	398Lb.in 45 N·m	60mm/2.36"	Ex9C1000G 50mm/1.97"
Terminal Lugs	LTC25NB (2×) 250MCM - 600MCM	398Lb.in 45 N·m	LTC26NC (3×) 3/0AWG - 600MCM	310Lb.in 35 N·m	
Suggest Size of Bus Bar	LTC25NC (3×) 4/0AWG - 500MCM	1.25"×0.25"×2 40mm×5mm×2	LTC26ND (4×) 3/0AWG - 500MCM	2"×0.25"×2 50mm×5mm×2	2"×0.25"×2 60mm×5mm×2

A1	M3.5		0.43" [11mm]		0.394" [10mm]		0.43" [11mm]	
A2	15Lb.in [1.7N·m]		AWG [mm ²]	AWG [mm ²]	AWG [mm ²]	AWG [mm ²]	AWG [mm ²]	AWG [mm ²]
			18-12 [1-2.5]					



The distance between the open position and the closed position

Ex9C115/150/185G	11mm ± 0.5mm 0.433" ± 0.020"
Ex9C225/265/300G	11.7mm ± 0.5mm 0.461" ± 0.020"
Ex9C400/500G	15.3mm ± 0.5mm 0.602" ± 0.020"
Ex9C630/800/1000G	17mm ± 0.5mm 0.669" ± 0.020"

Ex9C(R)115/150/185/225/265/300/400/500(G) must be installed in an enclosure sized 355mm x 355mm x 360mm at a minimum.

Ex9C630/800/1000(G) must be installed in an enclosure sized 750mm x 460mm x 400mm at a minimum.

Warning!

Motor may start automatically. Automatic start may injure persons and damage machines. Automatic restart is possible when "automatic reset" is active.

Avertissement !

Le redémarrage automatique du moteur peut provoquer des dégâts matériels et être dangereux pour personnes. Ce danger du redémarrage automatique correspond au mode «réarmement automatique».

¡Advertencia!

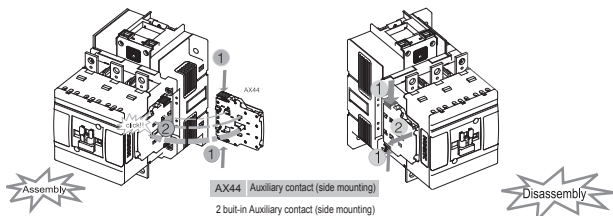
El motor puede arrancar automáticamente. El arranque automático es posible cuando el "botón de reset" está en posición automático y el circuito de maniobra activado.



Dangerous Electrical Current!
Only skilled qualified persons may carry out the following operations.

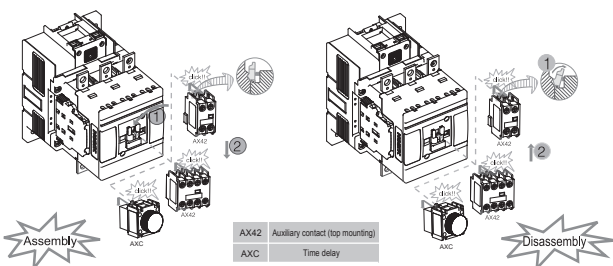
Tension électrique dangereuse!
Seules les personnes qualifiées et averties doivent exécuter les travaux ci-après.

¡Corriente eléctrica! ¡Peligro de muerte!
El trabajo a continuación descrito debe ser realizado por personas cualificadas y advertidas.



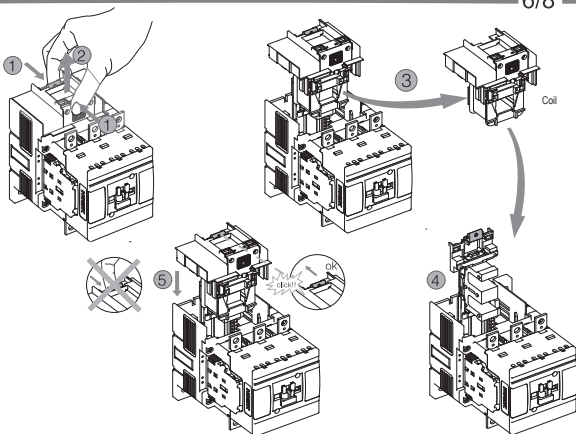
5/8

Ex9C115/150/185/225/265/300/400/500/630/800/1000

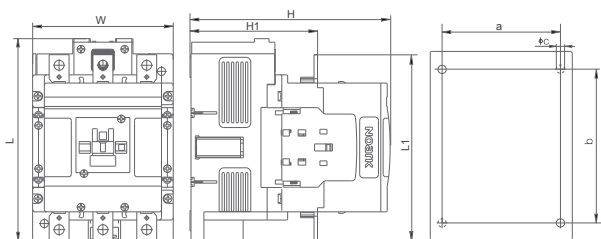


Disconnect all power before working on equipment.
Coupez toutes les alimentations avant de travailler sur l'équipement.
Desconecte la alimentación antes de trabajar en equipo.

6/8

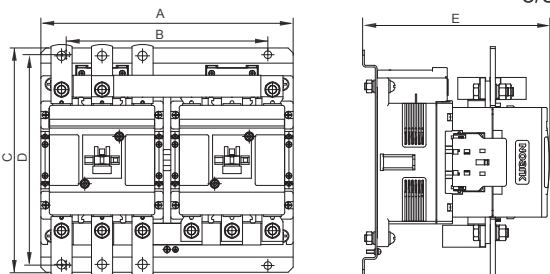


7/8



Code	Model	Ex9C115/150/185(G)	Ex9C225/265/300(G)	Ex9C400/500(G)	Ex9C630G	Ex9C800/1000G
W		4.75", 120mm	5.71", 145mm	6.30", 160mm	9.06", 230mm	9.06", 230mm
L		6.81", 173mm	8.35", 212mm	8.58", 218mm	10.71", 272mm	10.71", 272mm
L1		6.26", 159mm	7.60", 193mm	8.31", 211mm	11.73", 298mm	12.68", 322mm
H		6.85", 174mm	8.15", 207mm	9.02", 229mm	10.43", 265mm	10.43", 265mm
H1		4.25", 108mm	5.28", 134mm	5.95", 151mm	6.58", 167mm	6.65", 169mm
a		3.94", 100mm	4.73", 120mm	5.12", 130mm	7.87", 200mm	7.87", 200mm
b		5.12", 130mm	7.09", 180mm	7.09", 180mm	8.74", 222mm	8.74", 222mm
c		0.28", 7mm	0.35", 9mm	0.35", 9mm	0.46", 11.6mm	0.46", 11.6mm

8/8



Model	Ex9CR115/150/185(G)	Ex9CR225/265/300(G)	Ex9CR400/500(G)
A	9.80", 249mm	11.77", 299mm	12.95", 329mm
B	7.44", 189mm	9.41", 239mm	10.59", 269mm
C	9.06", 230mm	10.47", 266mm	10.55", 268mm
D	8.43", 214mm	9.84", 250mm	9.96", 253mm
E	7.64", 194mm	8.86", 225mm	9.69", 246mm

NOARK