

Technical data sheet - LÜTZE CABLEFIX® ONE

Cable Entry System for cables

Cable fittings and accessories



Identification	Type	CABLEFIX ONE 4
	Part-No.	606500

Use/Application/Characteristics

Application	<ul style="list-style-type: none"> • Cable entry system for cables with or without pre-installed connectors
Characteristics	<ul style="list-style-type: none"> • Kit includes frame, hardware and seal inserts to cover the entire clamping range specified for each entry point • Simplified ordering process using a single part number for each kit • Seal inserts have a layered design with defined clamping ranges accommodating a wide range of cable diameters • Unused seals are closed by default, eliminating the need for blanking plugs • Protects up to UL Type 4X, 12, 13 and IP 65 • Strong strain relief per DIN EN 62444 • Compact design provides space savings compared to using individual cable glands • Acc. to UL 50E and 508A

Technical data

Dimensions (w x h x d)	156.5 x 75.5 x 27.5 mm
Number of cables x cable diameter	2 x 3.5 – 15.5 mm + 2 x 15.5 – 29.5 mm
Number of cables	4
Clamping range L1	15.5 – 17.5 mm
	17.5 – 19.5 mm
	19.5 – 21.5 mm

17.07.2019 – Subject to technical modification

Part-No. 606500

USA: LUTZE INC.

13330 South Ridge Drive • Charlotte, NC 28273, USA
 Tel. +1 (704) 504-0222 • Fax +1 (704) 504-0223
 www.lutze.com • info@lutze.com

United Kingdom: LÜTZE Ltd.

Unit 3, Sandy Hill Park
 Sandy Way, Amington • GB-Tamworth, Staffs B77 4DU
 Tel. +44 (0)1827 31333-0 • Fax +44 (0)1827 31333-2
 www.lutze.com • sales.gb@lutze.co.uk



SYSTEMATIC TECHNOLOGY

Technical data sheet - LÜTZE CABLEFIX® ONE

Cable Entry System for cables

Clamping range L2	21.5 – 23.5 mm 23.5 – 25.5 mm 25.5 – 27.5 mm 27.5 – 29.5 mm
Clamping range S1	3.5 – 5.5 mm 5.5 – 7.5 mm 7.5 – 9.5 mm
Clamping range S2	9.5 – 11.5 mm 11.5 – 13.5 mm 13.5 – 15.5 mm
Approvals	UL Type 4X UL Type 12 UL Type 13 UL CCN NITW2 NITW8
Burning behavior according to	UL 94 HB
Oil resistant according to	UL/NEMA Typ 13
Temperature range	-40 °C ... +80 °C
Protection class	IP65

Construction

Description	LÜTZE CABLEFIX® ONE 4
Material	PA 6 glass fiber reinforced
Material sealing element	CR
Material seal	PUR
Bolt material	Steel
Material characteristics	Silicone-free
Color	black

General

PU	1 piece
Note	UL approval and sealing according to UL, in progress. Available in the 2nd half of the year.

17.07.2019 – Subject to technical modification

Part-No. 606500

USA: LUTZE INC.

13330 South Ridge Drive • Charlotte, NC 28273, USA
Tel. +1 (704) 504-0222 • Fax +1 (704) 504-0223
www.lutze.com • info@lutze.com

United Kingdom: LÜTZE Ltd.

Unit 3, Sandy Hill Park
Sandy Way, Amington • GB-Tamworth, Staffs B77 4DU
Tel. +44 (0)1827 31333-0 • Fax +44 (0)1827 31333-2
www.lutze.com • sales.gb@lutze.co.uk

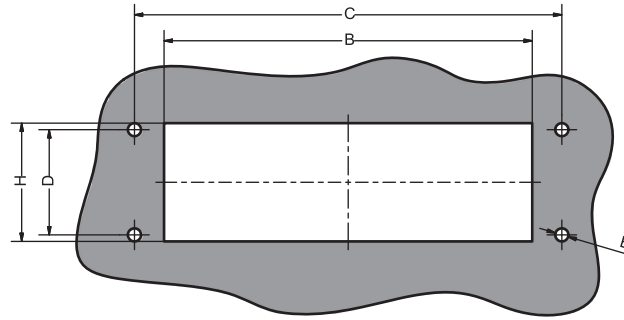


SYSTEMATIC TECHNOLOGY

Technical data sheet - LÜTZE CABLEFIX® ONE

Cable Entry System for cables

Dimensions



Cut-out (BxH)	112 x 46 mm
C	130.0 mm
D	32.0 mm
E	5.0 mm

17.07.2019 – Subject to technical modification

Part-No. 606500

USA: LUTZE INC.

13330 South Ridge Drive • Charlotte, NC 28273, USA
Tel. +1 (704) 504-0222 • Fax +1 (704) 504-0223
www.lutze.com • info@lutze.com

United Kingdom: LÜTZE Ltd.

Unit 3, Sandy Hill Park
Sandy Way, Amington • GB-Tamworth, Staffs B77 4DU
Tel. +44 (0)1827 31333-0 • Fax +44 (0)1827 31333-2
www.lutze.com • sales.gb@lutze.co.uk

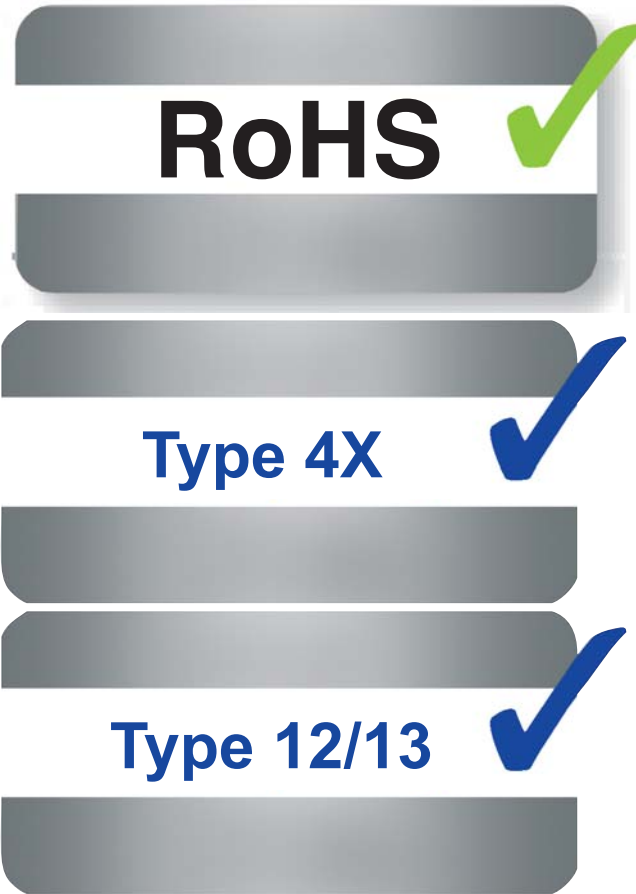


SYSTEMATIC TECHNOLOGY

Technical data sheet - LÜTZE CABLEFIX® ONE

Cable Entry System for cables

Symbols



17.07.2019 – Subject to technical modification

Part-No. 606500

USA: LUTZE INC.

13330 South Ridge Drive • Charlotte, NC 28273, USA
Tel. +1 (704) 504-0222 • Fax +1 (704) 504-0223
www.lutze.com • info@lutze.com

United Kingdom: LÜTZE Ltd.

Unit 3, Sandy Hill Park
Sandy Way, Amington • GB-Tamworth, Staffs B77 4DU
Tel. +44 (0)1827 31333-0 • Fax +44 (0)1827 31333-2
www.lutze.com • sales.gb@lutze.co.uk