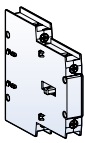
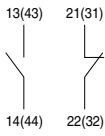


Auxiliary contact units

- 2 pole
- Side mountable
- Common use for Metasol contactors from MC-185a to MC-800a
- Auxiliary contact meet the requirements for mirror contacts in IEC 60947-4-1. Annex F
(A mirror contact is an auxiliary NC contact that cannot be closed simultaneously with a NO main contact)



Selection

Type	Appearance	Pole	Composition		Contact arrangement	Mount	Weight
			NO	NC			
AU-100 AU-100E		2	1	1		Side	53g

Maximum combination of contact units

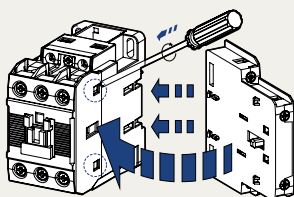
MC-185a~800a (Max. 4a4b)
AU-100 × 4EA (2EA on both sides)
AU-100E × 4EA (2EA on both sides)

Rating

Type		UA-1	UA-2, 4	UA-1, 2, 4 Low	AU-100	AU-100E	
Rated operation voltage (Ue)		600V	600V	600V	600V	60V	
Rated insulation voltage (Ui)		600V	600V	600V	600V	600V	
Rated impulse withstand voltage (Uimp)		6kV	6kV	6kV	6kV	6kV	
Rated frequency		50/60Hz	50/60Hz	50/60Hz	50/60Hz	50/60Hz	
Contact sensibility							
	Voltage	DC 17V	DC 24V	DC 5V	DC 24V	DC 7V	
	Current	DC 5mA	DC 10mA	DC 3mA	DC 10mA	DC 5mA	
Rated thermal current (Ith, AC12 duty)		10A	16A	16A	16A	1A	
Rated operation current							
	AC15 duty (A600)	120V	6A	6A	6A	6A	AC/DC 24V 0.1A AC/DC 50V 0.01A
		240V	3A	3A	3A	3A	
		380V	1.9A	1.9A	1.9A	1.9A	
		480V	1.5A	1.5A	1.5A	1.5A	
		500V	1.4A	1.4A	1.4A	1.4A	
		600V	1.2A	1.2A	1.2A	1.2A	
	DC13 duty (Q600)	125V	1.1A	1.1A	1.1A	1.1A	
		250V	0.55A	0.55A	0.55A	0.55A	
		400V	0.31A	0.31A	0.31A	0.31A	
		500V	0.27A	0.27A	0.27A	0.27A	
		600V	0.2A	0.2A	0.2A	0.2A	
Rated	1s	100A	-	-	100A	-	
Short-time	0.5s	125A	-	-	120A	-	
withstand current	0.1s	145A	-	-	140A	-	
Electrical lifetime (mil. operations)							
	AC15 duty	220V	0.25	0.25	0.25	0.25	1
		440V	0.25	0.25	0.25	0.25	
	DC13 duty	220V	0.25	0.25	0.25	0.25	
		440V	0.25	0.25	0.25	0.25	
Maximum operating cycles per hour		1800	1800	1800	1800	1200	
Conductor size (Solid, stranded)	AWG	18~10	18~10	18~10	18~10	18~10	
(the max. number of conducts: 2)	mm ²	1~2.5	1~2.5	1~2.5	1~2.5	1~2.5	

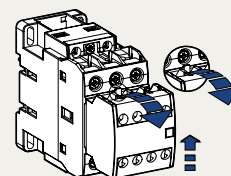
Installation

UA-1



To install side mounting unit remove the indicated part in the circle in the fig. first. And then fit each part as shown. To separate push forward and pull.

UA-2, 4



To install front mounting unit fit it on the upper part of the front of the contactor and push it down. To separate pull the lever of the unit and push the unit upward.