

ZXL Series



Features

- High reliability by 24K Gold plated contact of SPDT(1a+1b)
- Low maintenance by die-cast body & stainless steel of moving parts
- IP67 rated with built-in gasket in body cover & O-ring in moving part
- Changeable head part toward any direction
- Available optional LED indicator cover (ZXL-102/103)

Option Parts

24K Gold Plated
Contact Block
ZXL-101



Indicator Lamp

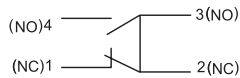
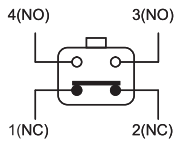
ZXL-102
LED 12 ~ 24V AC/DC

ZXL-103
Neon 110/240V AC

*Changeable ON status at NC or NO



Circuit



Contact Rating

Rated Voltage	Non-Inductive Load		Inductive Load	
	Resistive Load	Lamp Load	Inductive Load	Motor Load
125VAC	16A	5A	16A	8A
250VAC	12A	3A	12A	5A
500VAC	10A	2.5A	10A	2.5A
30VDC	8A	6A	8A	6A
125VDC	1A	0.3A	1A	0.3A
250VDC	0.5A	0.2A	0.5A	0.2A

Specifications

Contac		SPDT(1a+1b), 24K Ag Alloy
Protection		IP67
Terminal Tightened Torque		0.8N · m (8.16kgf · cm)
Insulation Resistance		100MΩ at 500V DC
Contact Resistance		50mΩ or lower
Operation Speed		0.1mm/sec ~ 0.5m/sec
Vibration		10~55Hz dual wave length 1.5mm
Ambient Temperature		Operation: -25°C~ +80°C, Storage: -30°C~+80°C
Ambient Humidity		35~85%RH (at -5~+40°C)
Impact Resistance	Durability	Max. 100G
	Error	Plunger max. 30G Lever Max. 20G
Internal Voltage	Btw terminals of the same polarity	1,000VAC 1min
	Btw charging pieces and the earth	2,000VAC 1min
	Btw terminal & non-charged metal	2,000VAC 1min
Expected Life	Electrical	Min. 500,000
	Mechanical	Min. 10,000,000

Dimensions

unit: mm

ZXL-301



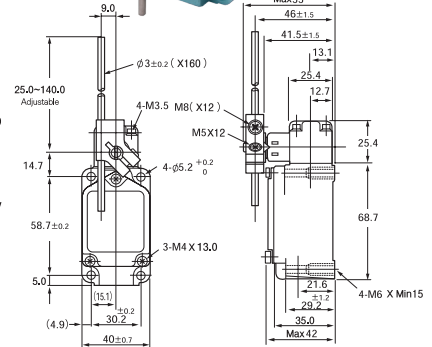
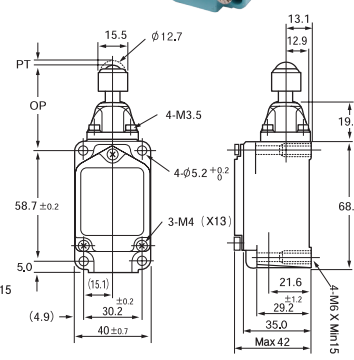
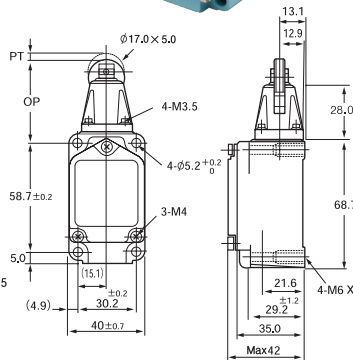
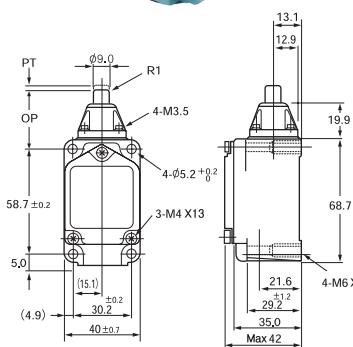
ZXL-302



ZXL-303



ZXL-704



OF	2,720gf(26.67N)
RF	910gf(8.92N)
PT	1.7mm
OT	6.4mm
MD	1mm
TT	-
OP	34 ± 0.8mm
TTP	29.5mm

OF	2,720gf(26.67N)
RF	910gf(8.92N)
PT	1.7mm
OT	5.6mm
MD	1mm
TT	-
OP	44 ± 0.8mm
TTP	39.5mm

OF	2,720gf(26.67N)
RF	910gf(8.92N)
PT	1.7mm
OT	4mm
MD	1mm
TT	-
OP	44.5 ± 0.8mm
TTP	41mm

OF	142gf(1.4N)
RF	28gf(0.27N)
PT	15 ± 5°
OT	80°
MD	12°
TT	100°
OP	
TTP	



ZXL-703



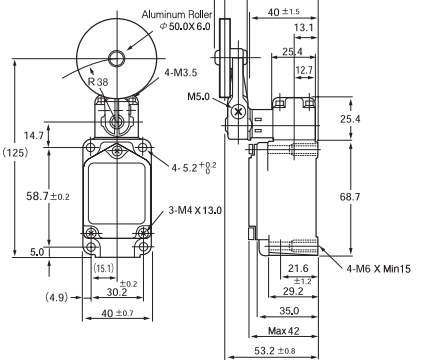
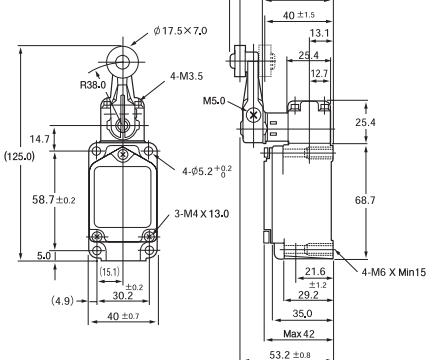
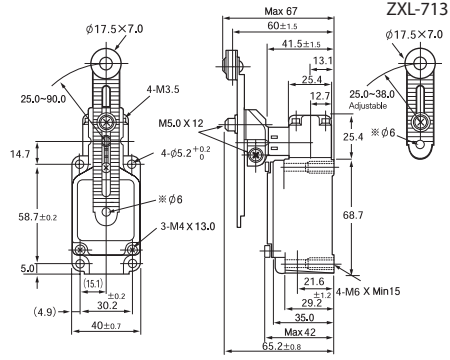
ZXL-713



ZXL-702



ZXL-705



OF	1,360gf(13.34N)	
RF	227gf(2.23N)	
PT	15 \pm 5°	80 \pm 5°(703M)
OT	80°	
MD	12°	
TT	100°	

OF	1,360gf(13.34N)
RF	227gf(2.23N)
PT	15 \pm 5°
OT	80°
MD	12°
TT	100°

OF	1,360gf(13.34N)
RF	227gf(2.23N)
PT	15 \pm 5°
OT	80°
MD	12°
TT	100°



ZXL-706
ZXL-726



ZXL-717



ZXL-727



ZXL-737



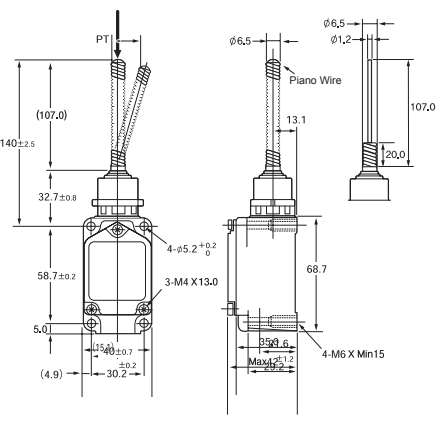
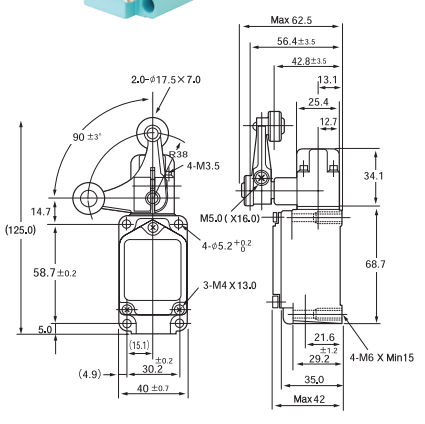
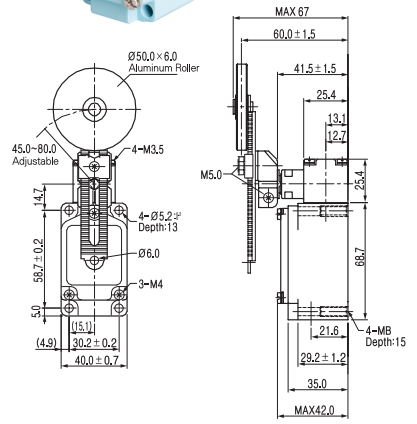
ZXL-747



ZXL-901



ZXL-902



OF	1,360gf(13.34N)
RF	227gf(2.23N)
PT	15 \pm 5°
OT	80°
MD	12°
TT	100°

OF	1,200gf(11.8N)
RF	50 \pm 5°
PT	15 \pm 5°
OT	35°
MD	-
TT	-

OF	150gf(1.47N)
RF	-
PT	20 \pm 10mm
OT	-
MD	-
TT	-