

## Safety switch NZ.HS with roller lever arm



- ▶ **Version A acc. to EN 50041**  
(steel roller  $\varnothing 18$ )
- ▶ **LED optional**
- ▶ **Plug connector optional**



### Approach direction



Switch head and lever arm can be adjusted in 90° steps.

### Switching direction

Right, left or both sides (see page 9).

### LED function display (optional)

A function display is available for the following voltage ranges:

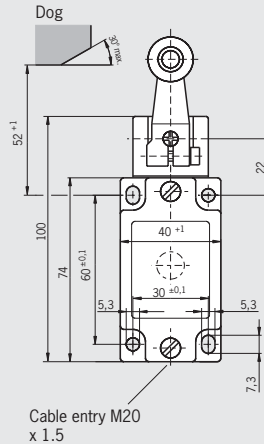
- ▶ DC 24 V  $\pm 10\%$  yellow
- ▶ AC/DC 12-60 V red or yellow

### Switching elements (see also page 13/14)

- ▶ **511** Snap-action switching contact  
1 NC  $\ominus$  + 1 NO
- ▶ **528H** Slow-action switching contact  
1 NC  $\ominus$  + 1 NO
- ▶ **538H** Slow-action switching contact  
2 NC  $\ominus$
- ▶ **2121H** Slow-action switching contact  
4 NC  $\ominus$
- ▶ **2131H** Slow-action switching contact  
3 NC  $\ominus$  + 1 NO
- ▶ **3131H** Slow-action switching contact  
2 NC  $\ominus$  + 2 NO

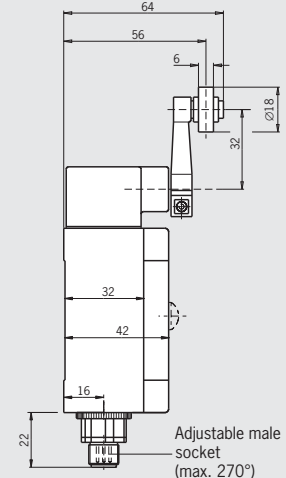
### Cable entry M20 x 1.5

### Dimension drawings



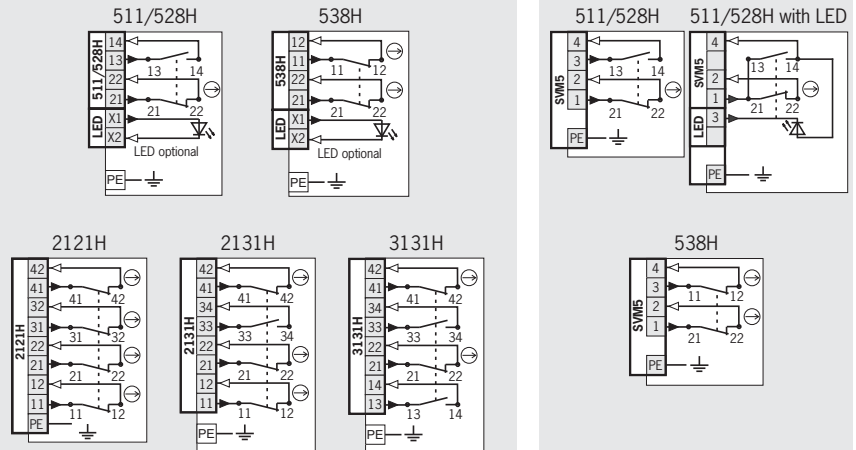
For cable glands, see page 132

### Plug connector SVM5 M12 plug, 5-pin



For mating connectors, see page 126

### Wiring diagrams Switch not actuated



### Ordering table

Series	Actuator	Con- nection	Switching element	Version	Function display		
					Without LED	12-60 V red LED	12-60 V yellow LED
NZ	HS Lever arm	1 Cable entry M20 x 1.5	511 <sup>1)</sup> 1 NC $\ominus$ + 1 NO		079953 <sup>1)</sup> NZ1HS-511-M	090035 <sup>1)</sup> NZ1HS-511L060-M	090038 <sup>1)</sup> NZ1HS-511L060GE-M
			528H 1 NC $\ominus$ + 1 NO		090970 NZ1HS-528-M	090971 NZ1HS-528L060-M	090049 NZ1HS-528L060GE-M
			538H 2 NC $\ominus$		090972 NZ1HS-538-M	090760 NZ1HS-538L060-M	-
			2121H 4 NC $\ominus$		090254 NZ1HS-2121-M	-	-
			2131H 3 NC $\ominus$ + 1 NO		090973 NZ1HS-2131-M	-	-
			3131H 2 NC $\ominus$ + 2 NO		090747 NZ1HS-3131-M	-	-
		2 Plug con- nector SVM5 (M12 plug)	511 <sup>1)</sup> 1 NC $\ominus$ + 1 NO		090867 <sup>1)</sup> NZ2HS-511SVM5	098648 <sup>1)</sup> NZ2HS-511SVM5L060GE	
			528H 1 NC $\ominus$ + 1 NO		090868 NZ2HS-528SVM5	-	-
			538H 2 NC $\ominus$		090869 NZ2HS-538SVM5	-	-

1) No DGUV approval for switching element 511

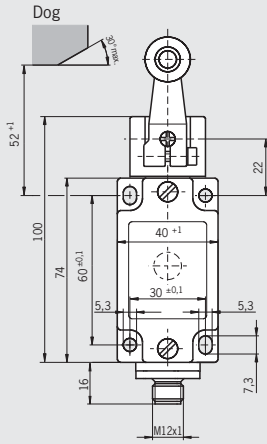


**Plug connector SM8**  
M12 plug, 8-pin

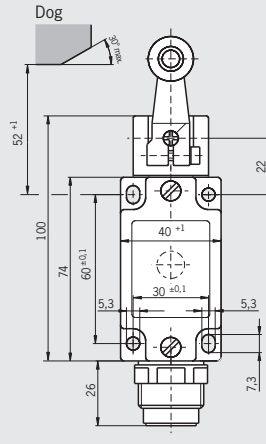
**Plug connector SR6**  
6-pin + PE

**Plug connector SR11**  
11-pin + PE

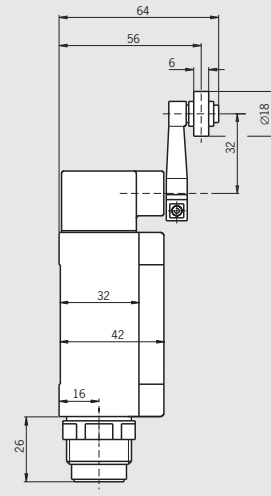
### Dimension drawings



For mating connectors, see page 126

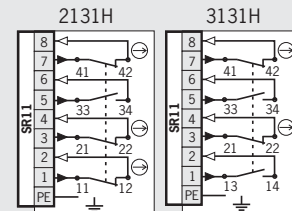
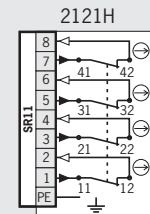
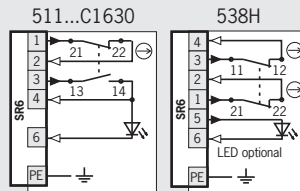
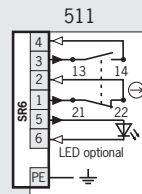
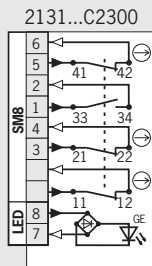


For mating connectors, see page 128



For mating connectors, see page 128

### Wiring diagrams Switch not actuated



### Ordering table

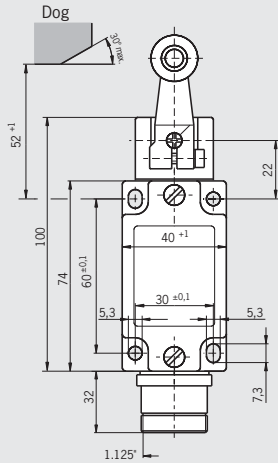
Series	Actuator	Con- nection	Switching element	Version	Function display			
					Without LED	24 V LED yellow	12-60 V red LED	12-60 V yellow LED
NZ	HS Lever arm	2 Plug con- nector SM8 (M12 plug)	2131H 3 NC ⊕ + 1 NO	C2300 Alternative wiring	-	122405 NZ2HS-2131L024GEC23000	-	-
			511 <sup>1)</sup> 1 NC ⊕ + 1 NO	C1631 Alternative wiring	089093 <sup>1)</sup> NZ2HS-511	-	089094 <sup>1)</sup> NZ2HS-511L060	090697 <sup>1)</sup> NZ2HS-511L060GE
			511 <sup>1)</sup> 1 NC ⊕ + 1 NO		-	-	078473 <sup>1)</sup> NZ2HS-511L060C1630	
		2 Plug con- nector SR6	528H 1 NC ⊕ + 1 NO	C1631 Alternative wiring	090852 NZ2HS-528	-	088196 NZ2HS-528L060	-
			538H 2 NC ⊕		090853 NZ2HS-538	-	090854 NZ2HS-538L060	-
			2121H 4 NC ⊕		091264 NZ2HS-2121	-	-	-
		2 Plug con- nector SR11	2131H 3 NC ⊕ + 1 NO	C1631 Alternative wiring	090146 NZ2HS-2131	-	-	-
			3131H 2 NC ⊕ + 2 NO		090856 NZ2HS-3131	-	-	-
			-		-	-	-	-

1) No DGUV approval for switching element 511



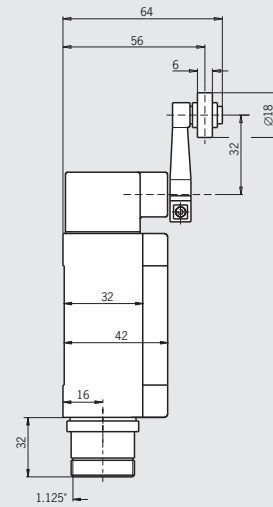
## Plug connector MR8 7-pin + PE

### Dimension drawings



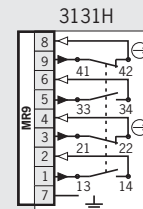
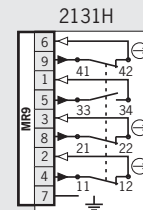
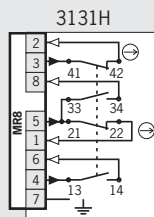
For mating connectors, see page 131

## Plug connector MR9 8-pin + PE



For mating connectors, see page 131

### Wiring diagrams Switch not actuated



### Ordering table

Series	Actuator	Con- nection	Switching element	Function display
				Without LED
NZ	HS Lever arm	1...8C Plug con- nector MR8	3131H 2 NC $\rightarrow$ + 2 NO	086574 NZ1HS-3131-8C-Ford / PT60577-101K01
			2131H 3 NC $\rightarrow$ + 1 NO	077391 <sup>2)</sup> NZ1HS-2131-9C-GMMF
		1...9C Plug con- nector MR9	3131H 2 NC $\rightarrow$ + 2 NO	073508 NZ1HS-3131-9C-GMMF

2) UL approval only for safety switch 077391