

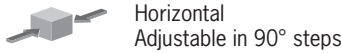
## Safety switch NZ.RK with roller plunger



- ▶ Steel roller  $\varnothing$  8 mm
- ▶ LED optional
- ▶ Plug connector optional
- ▶ Ball bearing optional



### Approach direction



### LED function display (optional)

A function display is available for the following voltage ranges:

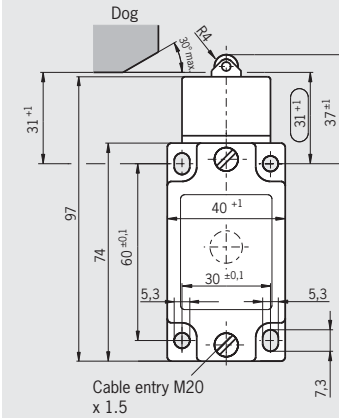
- ▶ AC/DC 12-60 V red or yellow
- ▶ AC 230 V  $\pm 15\%$  red

### Switching elements (see also page 13/14)

- ▶ **511** Snap-action switching contact  
1 NC  $\ominus$  + 1 NO
- ▶ **528H** Slow-action switching contact  
1 NC  $\ominus$  + 1 NO
- ▶ **538H** Slow-action switching contact  
2 NC  $\ominus$
- ▶ **2131H** Slow-action switching contact  
3 NC  $\ominus$  + 1 NO
- ▶ **3131H** Slow-action switching contact  
2 NC  $\ominus$  + 2 NO

### Cable entry M20 x 1.5

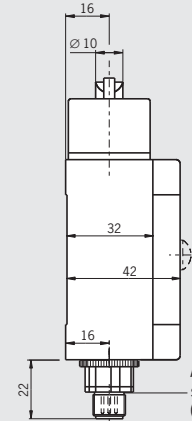
### Dimension drawings



For cable glands, see page 132

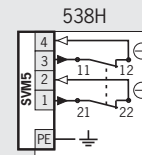
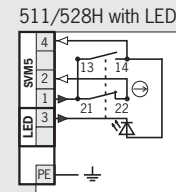
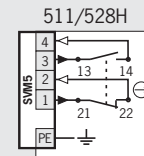
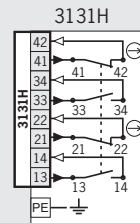
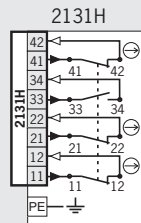
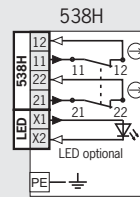
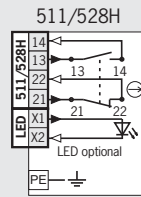
### Plug connector SVM5

M12 plug, 5-pin



For mating connectors, see page 126

### Wiring diagrams Switch not actuated



### Ordering table

Series	Actuator	Con- nection	Switching element	Version	Function display			
					Without LED	12-60 V red LED	230 V red LED	12-60 V yellow LED
NZ	RK Roller plunger	1 Cable entry M20 x 1.5	511 <sup>1)</sup> 1 NC $\ominus$ + 1 NO		088608 <sup>1)</sup> NZ1RK-511-M	090354 <sup>1)</sup> NZ1RK-511L060-M	090355 <sup>1)</sup> NZ1RK-511L220-M	-
			528H 1 NC $\ominus$ + 1 NO		090905 NZ1RK-528-M	090358 NZ1RK-528L060-M	-	-
			528H 1 NC $\ominus$ + 1 NO	C1912 With bearing	090572 NZ1RK-528-MC1912	-	-	086408 NZ1RK-528L060GE-MC1912
			538H 2 NC $\ominus$		090906 NZ1RK-538-M	-	-	-
			2131H 3 NC $\ominus$ + 1 NO		090907 NZ1RK-2131-M	-	-	-
			3131H 2 NC $\ominus$ + 2 NO		090908 NZ1RK-3131-M	-	-	-
		2 Plug con- nector SVM5 (M12 plug)	511 1 NC $\ominus$ + 1 NO		089007 NZ2RK-511SVM5	-	-	128141 NZ2RK-511SVM5L060GE
			528H 1 NC $\ominus$ + 1 NO		090930 NZ2RK-528SVM5	-	-	-
			538H 2 NC $\ominus$		089018 NZ2RK-538SVM5	-	-	-

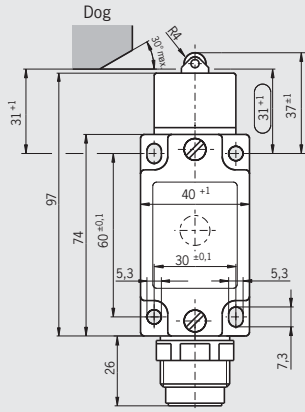
1) No DGUV approval for switching element 511



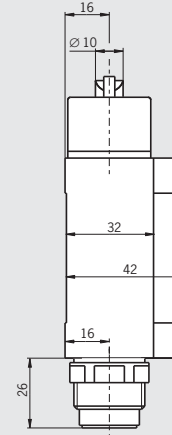
**Plug connector SR6**  
6-pin + PE

**Plug connector SR11**  
11-pin + PE

**Dimension drawings**

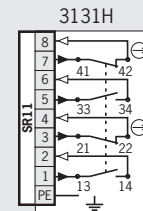
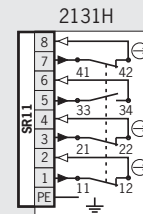
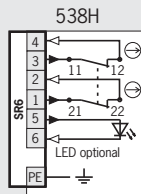
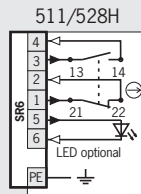


For mating connectors, see page 128



For mating connectors, see page 128

**Wiring diagrams** Switch not actuated



**Ordering table**

Series	Actuator	Con- nection	Switching element	Function display	
				Without LED	12-60 V red LED
NZ	RK Roller plunger	2 Plug con- nector SR6	511 <sup>1)</sup> 1 NC ⊕ + 1 NO	090016 <sup>1)</sup> NZ2RK-511	099273 <sup>1)</sup> NZ2RK-511L060
			528H 1 NC ⊕ + 1 NO	090919 NZ2RK-528	-
			538H 2 NC ⊕	090920 NZ2RK-538	-
		2 Plug con- nector SR11	2131H 3 NC ⊕ + 1 NO	090921 NZ2RK-2131	-
			3131H 2 NC ⊕ + 2 NO	090922 NZ2RK-3131	-

1) No DGUV approval for switching element 511