

System Accessories

Remote Alarm Horn & Beacon Devices

System Accessories

Model RAH, RAB-1 & RAB-2



MODEL RAH
Division 1 rated alarm horn



MODEL RAB-1
Division 1 rated flashing
alarm beacon



MODEL RAB-2
Division 2 rated flashing
alarm beacon

RAH Horn Description

Model RAH horns provide an electrically generated audible alarm to indicate the loss of pressure in the protected enclosure. It is formed from cast aluminum, is corrosion resistant and features a vibrating stainless steel diaphragm. The horn should be located in a prominent location where it can attract immediate attention, and is rated for Class I or II, Division 1 or 2, Group C-G hazardous areas. The Model RAH horn require 120 VAC power and can be controlled by the normally closed pressure loss alarm contacts of "WPS" style Type Y and Z Systems, Model EPSK and GPSK switches and all Type X Systems. The horn can be pendant or surface mounted and features a 3/4" female conduit port. Installation requires the use of seal-flex (Div. 2) or rigid (Div. 1) conduit and a conduit seal. The horn has a 100 decibel output and features an internally mounted volume control for field adjustment.

RAB-2 Description

Model RAB-2 beacons provide an electrically generated flashing visual alarm to indicate loss of protected enclosure pressure. The beacon is formed from cast aluminum, is corrosion resistant and features a flash tube bulb rated for 1,000 hours. It should be located in a prominent location where it can attract immediate attention, and is rated for Class I or II, Division 2, Group A-G hazardous areas. Model RAB-@ beacon requires 120 VAC power and can be controlled by the normally closed pressure loss alarm contacts of "WPS" style Type Y and Z Systems and all Type X Systems. The beacon is pendant mountable and features a 3/4" female conduit port. Installation requires the use of rigid conduit and a conduit seal. The light flashes at 80 pulses per minute, it has a 520,000 peak candle power rating and a 165 effective (visible) candle power rating and features a red shatterproof globe.

RAB-1 Description

Model RAB-1 is identical to RAB-2 with exception to the following details: The flash tube bulb rated for 2,000 hours. The beacon is rated for Class I or II, Division 1, Group C-G hazardous areas. The beacon has a 2,000,000 peak candle power rating and a 850 effective (visible) candle power rating and features a red fresnel lens and clear shatterproof globe.

OPTIONAL ACCESSORIES
For Pepperl+Fuchs
Enclosure Power Control Units



Remote Alarm Horn & Beacon Devices

Device Specifications

COMMON SPECIFICATIONS

Power Requirements: 120 VAC @ 50/60 Hz
 Conduit Connections: 3/4" FPT
 Construction Rating: RAH - Not Rated
 RAB-1 & RAB-2 - NEMA 4X

MODEL RAH

Dimensions: 7.625" H x 6.875" Diam. x 6.5" D
 Mounting Hole Centers: 6.5" on 45° angle
 Wiring Method: 8" 2-Wire Pigtail
 Shipping Weight: 12 lb
 Temp. Range: -31°F to +150°F
 Power Consumption: 0.2 A
 Maximum Sound Level: 100 Decibels at 10 ft.
 U.L. Listing: Class I, Div. 1, Group C-G

MODEL RAB-1

Dimensions: 15.5" H x 8.75" Diam.
 Wiring Method: Screw Terminals
 Shipping Weight: 35 lb
 Temp. Range: -35°F to +104°F
 Power Consumption: 0.6 A
 Flash Rate: 80/minute
 PCp / ECp: *2,000,000 / **850
 U.L. Listing: Class I, Div. 1, Group C-G

MODEL RAB-2

Dimensions: 8.75" H x 5.5" Diam.
 Wiring Method: 24" 2-Wire Pigtail
 Shipping Weight: 15 lb
 Temp. Range: -40°F to +149°F
 Power Consumption: 0.35 A
 Flash Rate: 80/minute
 PCp / ECp: *520,000 / **165
 U.L. Listing: Class I, Div. 2, Group A-G

* PCp - Peak (instrument measured) Candle power

** ECp - Effective (visually observed) Candle power

Material Specifications

MODEL RAH

Body: Copper-Free Cast Aluminum
 Finish: Grey Enamel
 Grill: Die Cast Zinc
 Diaphragm: 304 Stainless Steel

MODEL RAB-1 & RAB-2

Body: Copper-Free Cast Aluminum
 Finish: RAB-1 Tan Powder Epoxy
 RAB-2 Black Epoxy
 Exposed Fasteners: Stainless Steel
 Globe: Shatterproof Glass
 Fresnel Lens (RAB-1): Lexan®

Lexan® is a registered trademark of the General Electric Company

Special Note

ALL SPECIFICATIONS SUBJECT TO CHANGE
 WITHOUT NOTICE.
 WARRANTY & LIABILITY POLICIES AVAILABLE
 UPON REQUEST.

Cast Aluminum Housing

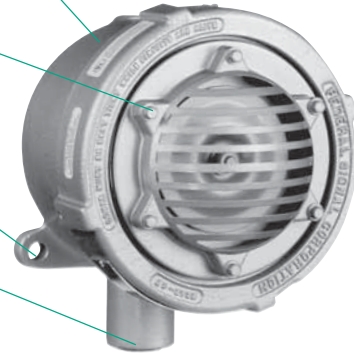
Cover: 6.875" Diam.

Die Cast Zinc Grill

1/4" Mounting Hole

3/4" Conduit Entry

8" 2-Wire Pigtail
(not shown)



Model RAH

3/4" Conduit Pendant

Electrical Connection
Block Housing

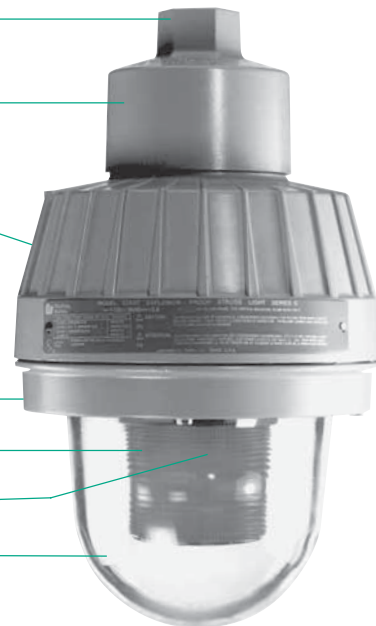
Explosion-Proof
Cast Aluminum
Housing

Globe Retainer Ring

Red Lexan® Fresnel Lens

High Intensity Strobe Light

Clear Heavy-Duty
Glass Globe



Model RAB-1

24" 2-Wire Pigtail
(not shown)

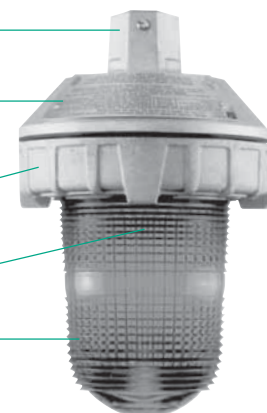
3/4" Conduit Pendant

Explosion-Proof
Cast Aluminum
Housing

Globe Retainer Ring

High Intensity Strobe Light

Red Glass Globe



Model RAB-2