

**Overview**

- Extended functional reserve capacities for maximum reliability
- Baumer PinPoint LED: Small, homogeneous light spot with sharp edges
- IO-Link interface independent of the switching output (Dual Channel)
- Extended parameterization options and additional diagnostic data
- Quick mounting by means of M3 threaded bushes made of stainless steel



Picture similar



**Technical data**

General data		Electrical data	
Type	Retro-reflective sensor	Voltage drop Vd	< 2 VDC
Version	IO-Link dual channel	Output function	Light / dark operate
Light source	Pulsed PinPoint LED	Output circuit	Push-pull
Actual range Sb	3 m	Output current	< 50 mA
Nominal range Sn	4 m	Short circuit protection	Yes
Smallest object recognizable typ.	4 mm (FTAR 013A000)	Reverse polarity protection	Yes
Polarization filter	Yes	<b>Communication interface</b>	
Alignment / soiled lens indicator	Flashing output indicator	Baud rate	38,4 kBaud (COM 2)
Output indicator	LED yellow	Adjustable parameters	Switching point Time filters LED status indicators Output logic Output circuit Counter Deactivate the sensor element Find Me function Teach-in mode
Power on indication	LED green	IO-Link port type	Class A
Sensitivity adjustment	IO-Link	Process data length	32 Bit
Wave length	644 nm	Process data structure	Bit 0 = SSC1 (presence) Bit 2 = quality Bit 3 = alarm Bit 5 = SSC4 (counter) Bit 16-31 = 16 Bit measurement
Suppression of reciprocal influence	Yes	Interface	IO-Link V1.1
Alignment optical axis	< 1,5°		
<b>Electrical data</b>			
Response time / release time	< 0,4 ms		
Jitter	< 0,21 ms		
Voltage supply range +Vs	10 ... 30 VDC		
Current consumption max. (no load)	45 mA (@ 10 VDC)		
Current consumption typ.	16 mA (@ 24 VDC)		

2021-05-06 The product features and technical data specified do not express or imply any warranty. Technical modifications subject to change.

**Technical data**

**Communication interface**

Additional data	Signal strength
	Excess gain
	Operating cycles
	Device temperature
Cycle time	≥ 2,7 ms

**Mechanical data**

Width / diameter	8 mm
Height / length	25,1 mm
Depth	15,8 mm
Type	Rectangular

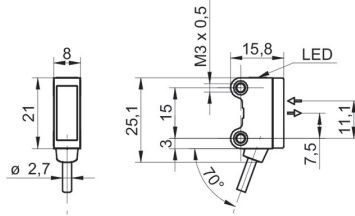
**Mechanical data**

Mechanical mounting	Threaded sleeves M3 (stainless steel)
Housing material	Plastic (ASA, PMMA)
Front (optics)	PMMA
Connection types	Cable 4 pin, 2 m
Cable characteristics	PVC / PVC 4 x 0,08 mm <sup>2</sup>

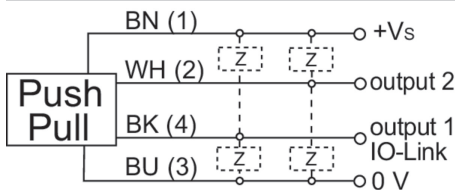
**Ambient conditions**

Operating temperature	-25 ... +50 °C
Protection class	IP 67

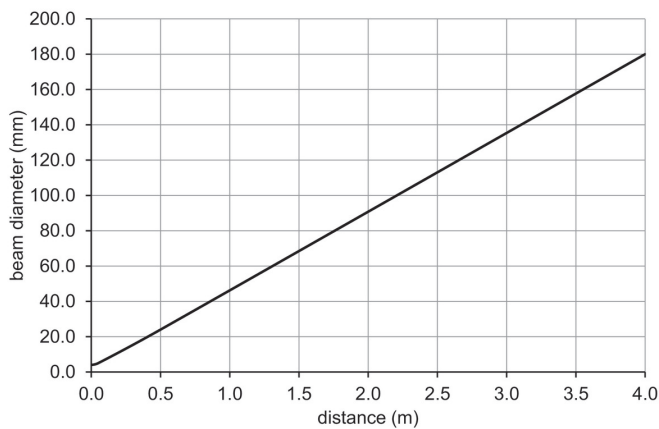
**Dimension drawing**



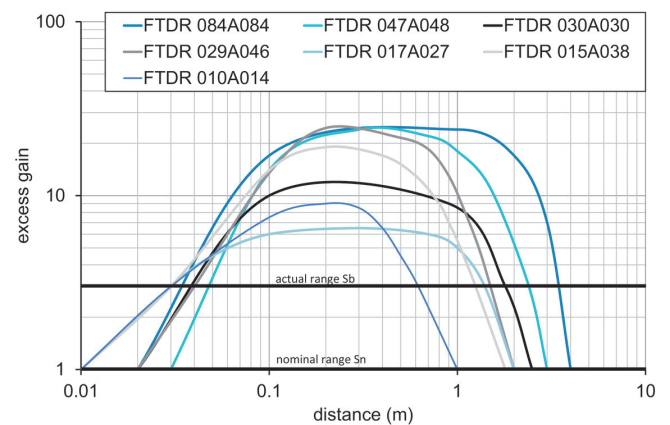
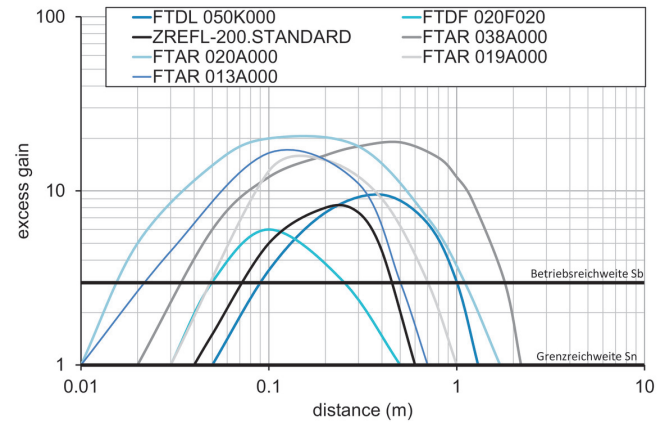
**Connection diagram**



**Beam characteristic (typically)**



**Excess gain curve**



**Lateral operating range**

