

**Overview**

- Outstanding reliability and unrivalled immunity against ambient light
- Baumer PinPoint LED: Small, homogeneous light spot with sharp edges
- IO-Link interface independent of the switching output (Dual Channel)
- Extended parameterization options and additional diagnostic data
- Robust housing with stainless steel spacer sleeves



Picture similar



**Technical data**

General data		Electrical data	
Type	Background suppression	Output function	Light / dark operate
Version	IO-Link dual channel	Output circuit	Push-pull
Light source	Pulsed PinPoint LED	Output current	< 50 mA
Sensing distance Tw	20 ... 120 mm	Short circuit protection	Yes
Sensing range Tb	3 ... 132 mm	Reverse polarity protection	Yes
Alignment / soiled lens indicator	Flashing output indicator	<b>Communication interface</b>	
Power on indication	LED green	Baud rate	38,4 kBaud (COM 2)
Output indicator	LED yellow	Adjustable parameters	Switching point Switching hysteresis Time filters LED status indicators Output logic Output circuit Counter Operation mode Deactivate the sensor element Find Me function Teach-in mode
Sensing distance adjustment	IO-Link	IO-Link port type	Class A
Wave length	644 nm	Process data length	32 Bit
Suppression of reciprocal influence	Yes	Process data structure	Bit 0 = SSC1 (presence) Bit 2 = quality Bit 3 = alarm Bit 5 = SSC4 (counter) Bit 16-31 = 16 Bit measurement
Beam type	Point	Interface	IO-Link V1.1
Alignment optical axis	< 1,5°		
<b>Electrical data</b>			
Response time / release time	< 0,4 ms (High Speed Mode)		
Jitter	< 0,21 ms (High Speed Mode)		
Voltage supply range +Vs	10 ... 30 VDC		
Current consumption max. (no load)	45 mA (@ 10 VDC)		
Current consumption typ.	16 mA (@ 24 VDC)		
Voltage drop Vd	< 2 VDC		

The product features and technical data specified do not express or imply any warranty. Technical modifications subject to change. 2021-05-06

**Technical data**

**Communication interface**

Additional data	Excess gain
	Operating cycles
	Device temperature

Cycle time	≥ 2,7 ms
------------	----------

**Mechanical data**

Width / diameter	8 mm
Height / length	25,1 mm
Depth	15,8 mm
Type	Rectangular

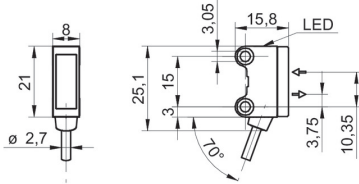
**Mechanical data**

Mechanical mounting	Sleeve smooth (stainless steel)
Housing material	Plastic (ASA, PMMA)
Front (optics)	PMMA
Connection types	Cable 4 pin, 2 m
Cable characteristics	PVC / PVC 4 x 0,08 mm <sup>2</sup>

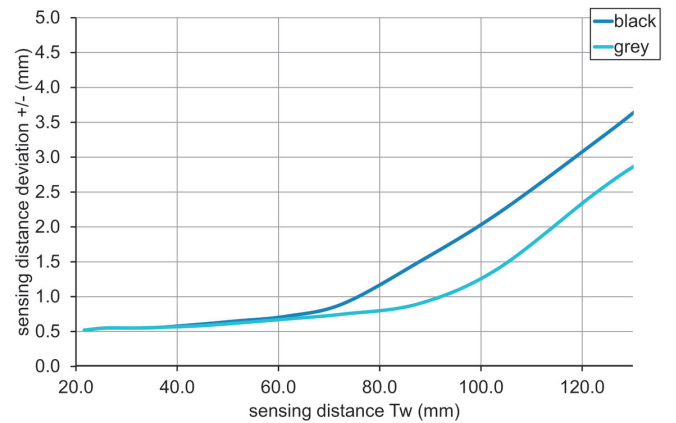
**Ambient conditions**

Protection class	IP 67
Operating temperature	-25 ... +50 °C

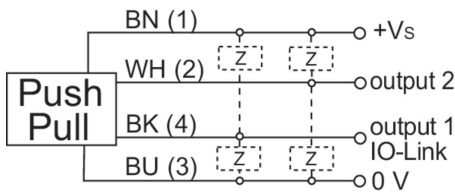
**Dimension drawing**



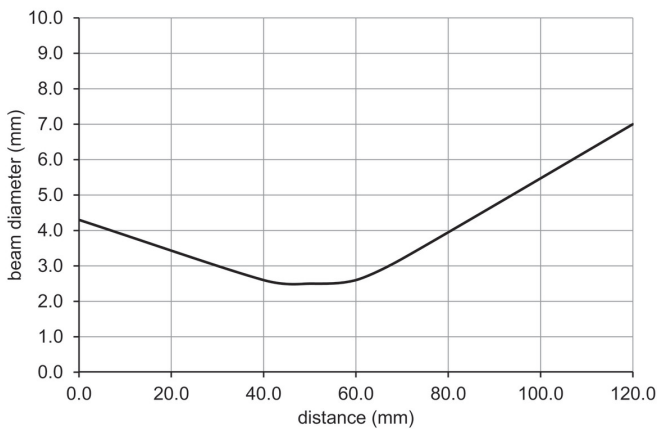
**Sensing distance diagram**



**Connection diagram**



**Beam characteristic (typically)**



**Hysteresis curve**

