

Overview

- Most secure object detection due to the barrier principle
- Fixed preset for the simplest commissioning
- Robust housing with stainless steel spacer sleeves



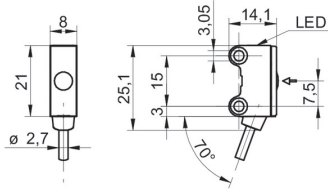
Picture similar



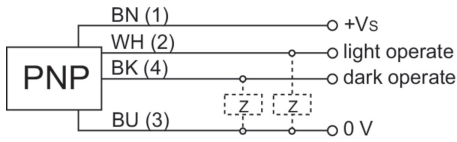
Technical data

General data		Electrical data	
Type	Through beam sensor	Voltage drop Vd	< 2 VDC
Emitter / receiver	Receiver	Output function	Light / dark operate
Actual range Sb	5 m	Output circuit	PNP complementary
Nominal range Sn	6 m	Output current	< 50 mA
Smallest object recognizable typ.	5 mm (0,5 mm with aperture)	Short circuit protection	Yes
Alignment / soiled lens indicator	Flashing output indicator	Reverse polarity protection	Yes
Output indicator	LED yellow	Mechanical data	
Power on indication	LED green	Width / diameter	8 mm
Sensitivity adjustment	No	Height / length	25,1 mm
Suppression of reciprocal influence	Yes	Depth	14,1 mm
Electrical data		Type	Rectangular
Response time / release time	< 0,5 ms	Mechanical mounting	Sleeve smooth (stainless steel)
Voltage supply range +Vs	10 ... 30 VDC	Housing material	Plastic (ASA, PMMA)
Current consumption max. (no load)	20 mA (@ 30 VDC)	Front (optics)	PMMA
Current consumption typ.	16 mA (@ 24 VDC)	Connection types	Cable 4 pin, 2 m
		Cable characteristics	PVC / PVC 4 x 0,08 mm ²
		Ambient conditions	
		Operating temperature	-25 ... +50 °C
		Protection class	IP 67

Dimension drawing



Connection diagram



Excess gain curve

