

**Overview**

- Outstanding reliability and unrivalled immunity against ambient light
- Easy to adjust via line teach
- Intuitive Xpress Teach / 1-Step Teach method
- Robust housing with stainless steel spacer sleeves



Picture similar



**Technical data**

**General data**

Type	Background suppression
Light source	Pulsed red LED
Sensing distance Tw	15 ... 80 mm
Sensing range Tb	7 ... 80 mm
Smallest object recognizable typ.	0,25 mm at 40 mm
Alignment / soiled lens indicator	Flashing output indicator
Power on indication	LED green
Output indicator	LED yellow
Sensing distance adjustment	External Teach-in / 1-Step Teach-in
Wave length	644 nm
Suppression of reciprocal influence	Yes
Alignment optical axis	< 1,5°

**Electrical data**

Response time / release time	< 1 ms
Voltage supply range +Vs	10 ... 30 VDC
Current consumption max. (no load)	20 mA (@ 30 VDC)

**Electrical data**

Current consumption typ.	16 mA (@ 24 VDC)
Voltage drop Vd	< 2 VDC
Output function	Light operate
Output circuit	Push-pull
Output current	< 50 mA
Short circuit protection	Yes
Reverse polarity protection	Yes

**Mechanical data**

Width / diameter	8 mm
Height / length	25,1 mm
Depth	14,1 mm
Type	Rectangular
Mechanical mounting	Sleeve smooth (stainless steel)
Housing material	Plastic (ASA, PMMA)
Front (optics)	PMMA
Connection types	Cable 4 pin, 2 m
Cable characteristics	PVC / PVC 4 x 0,08 mm <sup>2</sup>

**Ambient conditions**

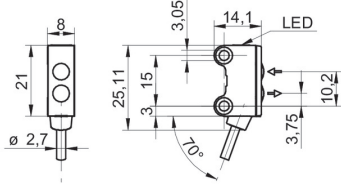
Protection class	IP 67
Operating temperature	-25 ... +50 °C

# O200.GR-GL1E.72CV/T007

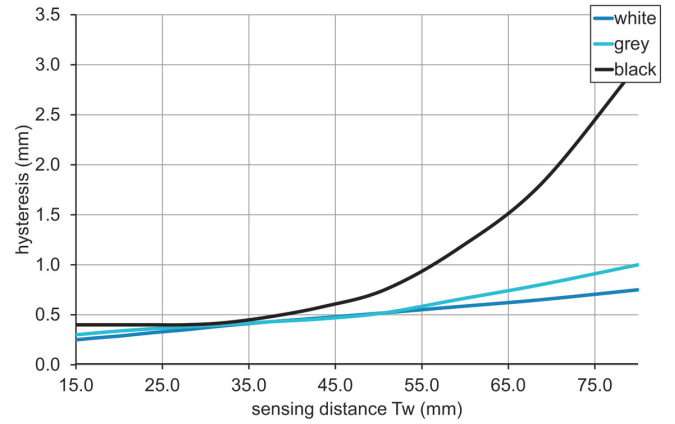
Diffuse sensors with background suppression - miniature

Article number: 11210543

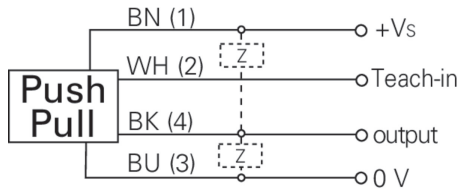
## Dimension drawing



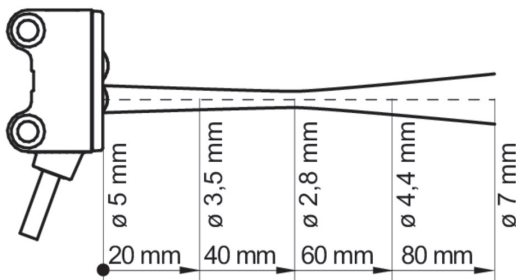
## Hysteresis curve



## Connection diagram



## Beam characteristic (typically)



## Sensing distance diagram

